

SPECIFICATIONS:

CONSTRUCTION: 12 Gauge steel cabinet finished with Powder-Coat Finish, Includes hopper and stand, removable endcaps for easy access to filters, pressure gauge to indicate filter changes, and automatic cleaning. Also included is a direct drive motor/blower assembly, Motor starters/disconnects NOT INCLUDED.

WEIGHT: 1730 lbs.
AIRFLOW: See chart below
NOISE: See chart "A"

ELECTRICAL:

- 5 HP 208/230/460/3/60, 12.0/6.0 amps, BI blower, std.
- 7.5 HP 208/230/460/3/60, 17.2/8.6 amps, BI blower, opt.
- 10 HP 208/230/460/3/60, 24.0/12.0 amps, High press., opt.
- 10 HP 208/230/460/3/60, 24.0/12.0 amps, High flow, opt.

FIRE SUPPRESSION: Equipment provided by others.

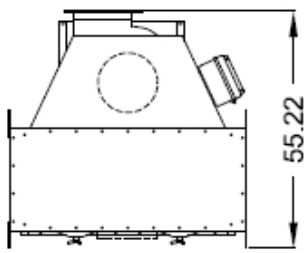
MAIN FILTERS: (12)16"Diameter cartridges, CLEAN 2, std.
 (12)16"Diameter cartridges, FiberDust, opt.

HEPA OPTION: External HEPA filter, 99.97% (2000 CFM)
 External HEPA filter, 99.97% (4000 CFM)

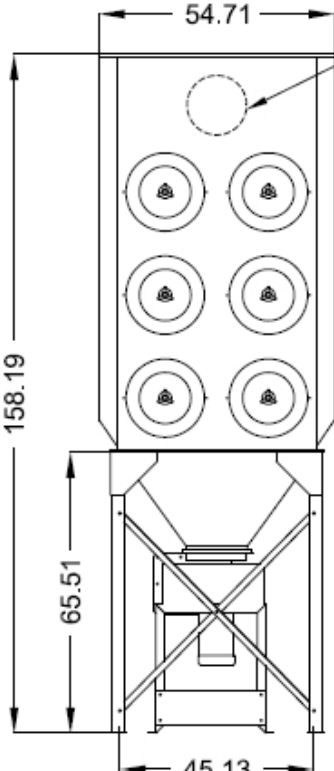
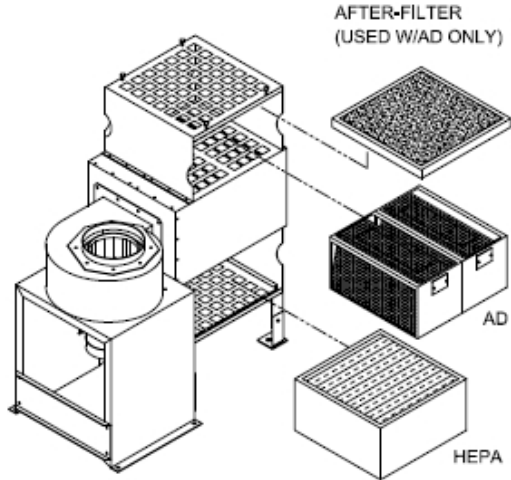
AD OPTION: (2) External adsorbers, 50 lbs., refillable, followed by a 2" poly afterfilter (2000 CFM)
 (2) External adsorbers, 50 lbs., refillable, followed by a 2" poly afterfilter (4000 CFM)

OTHER OPTIONS: 55 Gallon lld/hose Raincap
 Slide gate
 50 Hz
 575 Volt
 Silencer
 Explosion vent door

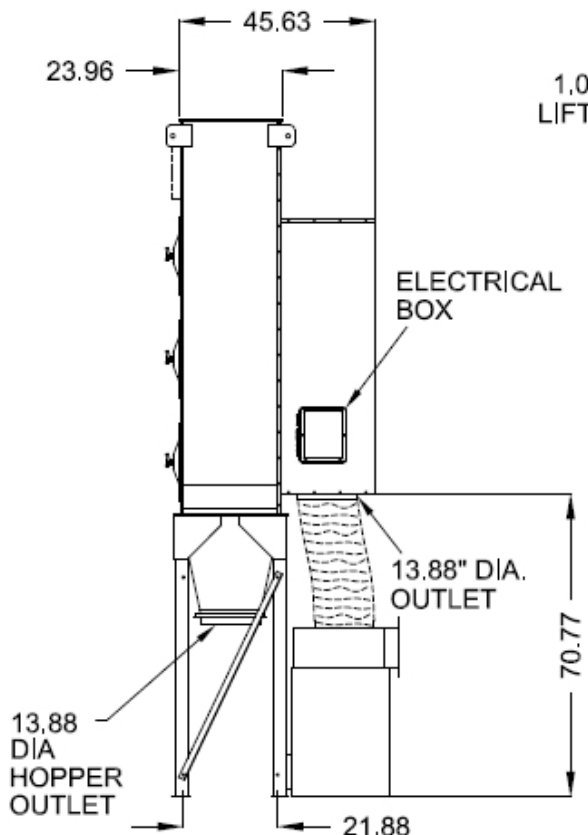
SPECIAL NOTES: Compressed air filter provided by others.



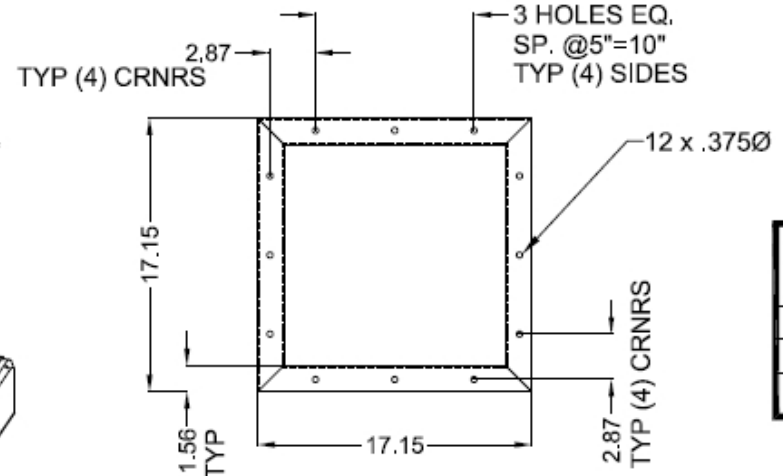
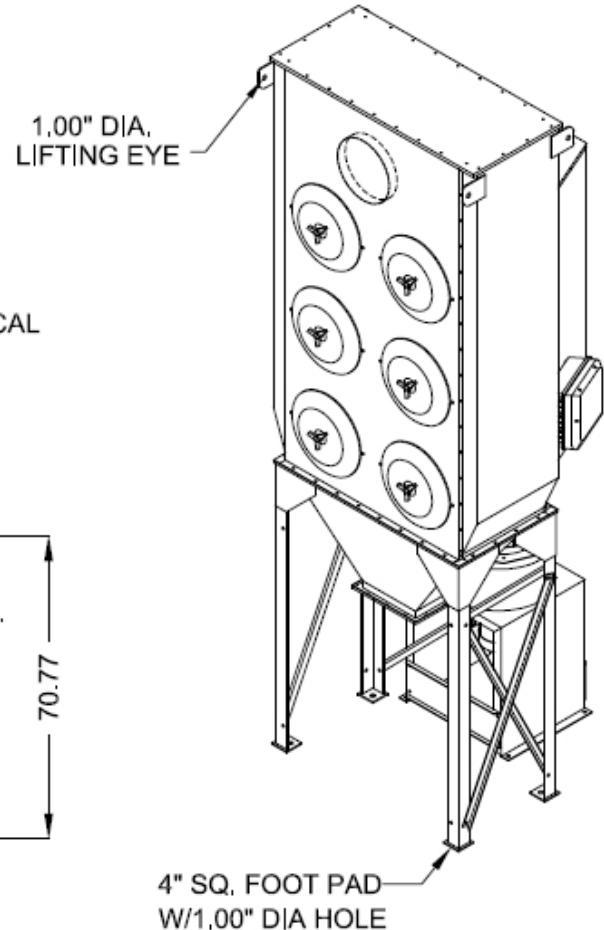
TOP VIEW



FRONT VIEW



SIDE VIEW



HOPPER OUTLET

CHART "A"

MOTOR/BLOWER OPTION	dBA	dBA WITH SILENCER
5 HP, BI	84	75
7.5 HP, BI	84	75
10 HP	89	78

MOTOR/BLOWER OPTION	"wg EXTERNAL ADDED STATIC									
	1	2	3	4	5	6	7	8	9	10
5 HP, BI	3550	3350	3075	2700	2275	1700	—	—	—	—
7.5 HP, BI	4950	4800	4550	4250	3875	3300	2500	—	—	—
10 HP, HP	5500	5375	5250	5100	4950	4750	4550	4350	4100	3850
10 HP, HF	6800	6550	6150	5950	5650	5400	4900	4400	3800	—

CUBIC FEET PER MINUTE (CFM)

04-05

CUSTOMER:
 CUSTOMER P.O.:
 PROJECT:
 ENGINEER:
 SALES REP.:
 IDENTIFICATION / TAGGING:

www.lev-co.com • 1.888.862.5356

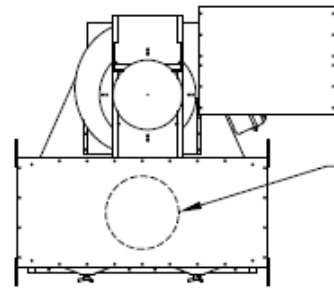


The device depicted and described hereon embodies proprietary information owned by the manufacturer. All design, manufacturing, reproduction, sales and patent rights regarding this device or drawing reserved except where explicit right is guaranteed in writing. We reserve the right to make design changes.

Drawn by: Janos B
 Date: 5/1/2008
 Scale: NTS
 Weight: N/A

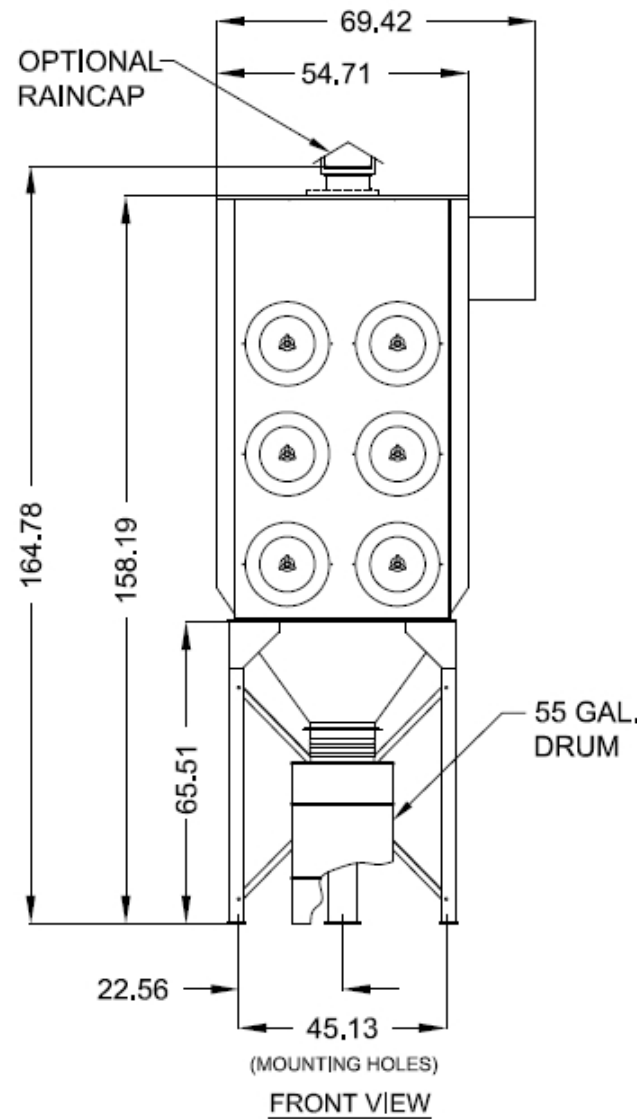
04-05 DC-12
CARTRIDGES DUST COLLECTOR
 Specification Drawing

Drawing No.: - File Name: (04-05) DC-12 - SD
 Material: Product manufactured by: **Airflow SYSTEMS INC.** Sheet: 1/2

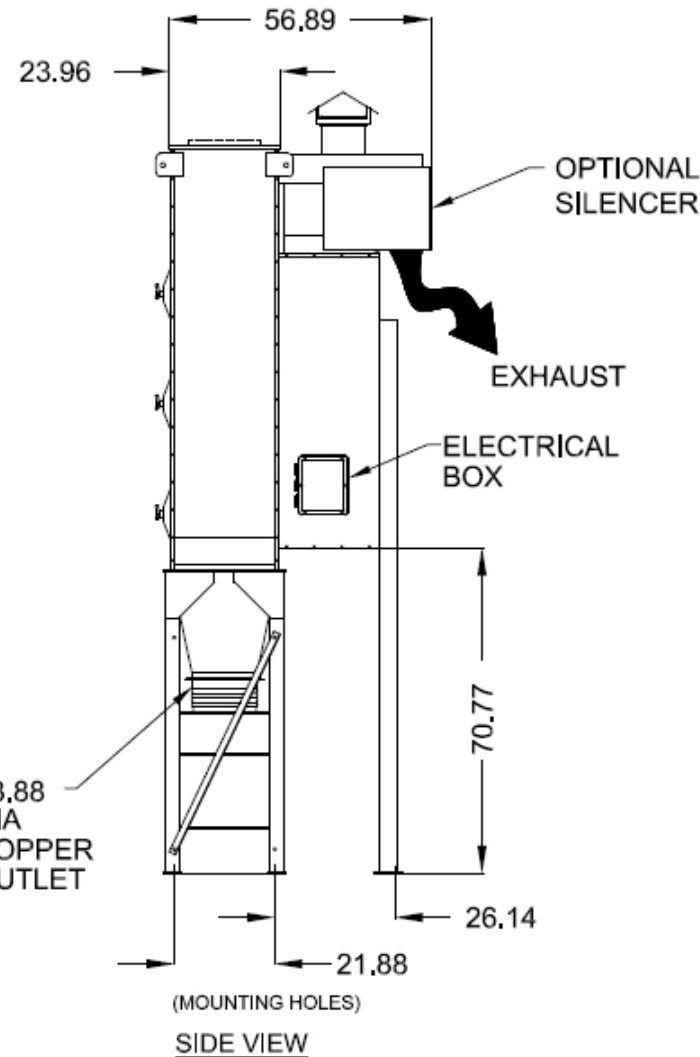


CUSTOMER TO SPECIFY INLET SIZE AND LOCATION (UP TO 22" FRONT, BACK OR TOP, 21" SIDES)

TOP VIEW



FRONT VIEW



SIDE VIEW

MODELS & OPTIONS:

Part # Description

Main System / Part

- DC-12 Cartridge dust collector with (12) Clean 2® filters, front load, 5 HP motor/blower with AMCA Type B spark resistant blower wheel, and auto clean Vibra-Pulse® cleaning system with ½" regulator. Motor starters not included

Fan / Motor Upgrades or Options (when ordering main unit)

- DC-12-10HP-HF 10 Hp TEFC, High Flow Blower Option for Standard DC-12 Unit
- DC-12-10HP-HP 10Hp TEFC, High Pressure Blower Option for Standard DC-12 Unit
- DC-12-7.5HP-BI 7.5HP BI Blower Option for Standard DC-12 Unit
- DC-12-LESS BLOWER Delete Standard 5Hp Motor/Blower Option for Standard DC-12 Unit
- DC-12-TOPMOUNT Option for top mounting all blower options for DC-12.

Filter Options (when ordering main unit)

- DC-12-EXT-AD4 External AD-4000 CFM (Includes Silencer) Option for Standard DC-12 Unit
- DC-12-EXT-HE4 External Hepa-4000 CFM (Includes Silencer) Option for Standard DC-12 Unit
- DC-12-FD FiberDust Cartridge Filter Option for Standard DC-12 Unit
- DC-12-UCP ULTRACLEAN-PLUS Cartridges Option for Standard DC-12 Unit

Preventative Maintenance Pressure Gauges, etc. (when ordering main unit)

- DC-12-PG-10 0-10" magna-helic pressure gauge, approximately 5" diameter size. Surface mounted.

Misc. Options

- DC-12-BLOCK OFF Block Off Components Option for Standard DC-12 Unit
- DC-12-EXP VENT Explosion Vent Door Option for Standard DC-12 Unit
- DC-12-HOPPER-20 20 Gal. Hopper Option for Standard DC-12 Unit
- DRUM-45 45 imperial gallon (55 US gallons) steel drum c/w lid.

Sound Attenuation

- DC-12-S-BI 5HP, 7.5HP & 10HP BI Blower Silencer Option for Standard DC-12 Unit

Installation Option & Accessories

- DC-12-GATE Slide Gate Option for Standard DC-12 Unit
- DC-12-RS Rain Shield Kit Option for Standard DC-12 Unit

04-05

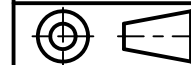
CUSTOMER:
 CUSTOMER P.O.:
 PROJECT:
 ENGINEER:
 SALES REP.:
 IDENTIFICATION / TAGGING:

> www.lev-co.com • 1.888.862.5356

lev-co

The device depicted and described hereon embodies proprietary information owned by the manufacturer. All design, manufacturing, reproduction, sales and patent rights regarding this device or drawing reserved except where explicit right is guaranteed in writing. We reserve the right to make design changes.

Drawn by: Janos B
 Date: 5/1/2008
 Scale: NTS
 Weight: N/A



04-05 DC-12
CARTRIDGES DUST COLLECTOR
 Specification Drawing

Drawing No.: - File Name: (04-05) DC-12 - SD
 Material: Product manufactured by: Sheet: 2/2

