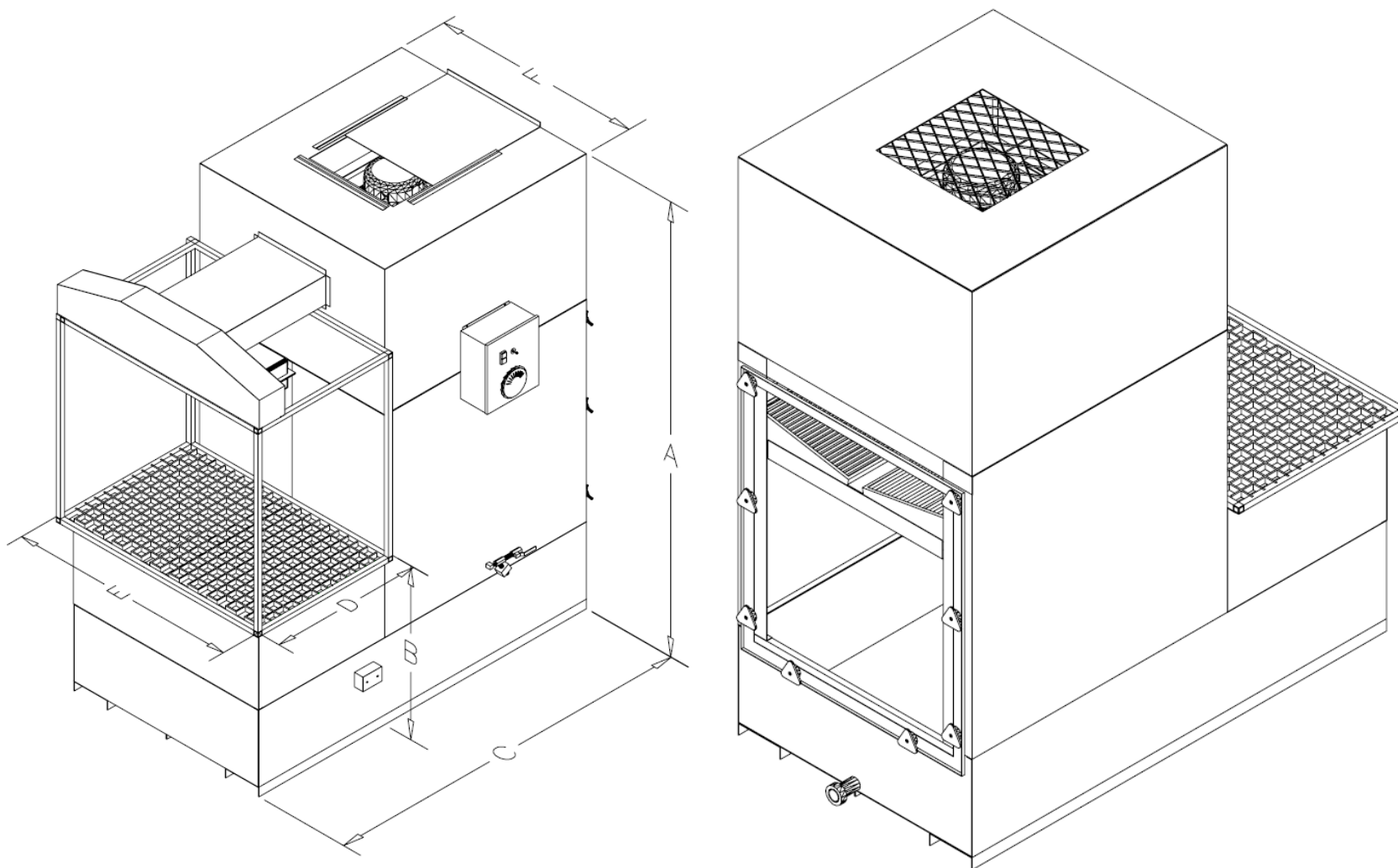


## HYDROTRON Water Filter Dust Collector

This downdraft table is a self contained workstation which filters aluminum, titanium, and other potentially explosive dust. Located inside or outside of building, it easily fits to the layout of your floorspace. No large system to run, each unit operates independently, minimizing downtime during cleaning or maintenance.

The Hydrotron purifies air by a combination of centrifugal force and a violent mixing of water & contaminated air. The dust particles penetrate the water, removing them from the airstream. Particles settle to the bottom of the collector and the water is reused.



DHYD1-	A	B	C	D	E	F
10-2	72"	35"	48"	32"	25"	20"
25-3	72"	36"	44"	24"	48"	44"
30-5-3	80"	36"	60"	30"	38"	34"
30-5-3-3	80"	36"	60"	36"	38"	34"
30-5-4	80"	36"	60"	30"	48"	34"
30-5-4-3	80"	36"	60"	36"	48"	34"
50-10-4	94"	36"	78"	30"	48"	44"
50-10-4-3	94"	36"	78"	36"	48"	44"
50-10-6	94"	36"	78"	30"	72"	44"
50-10-6-3	94"	36"	78"	36"	72"	44"

### OPTIONS:

1. Regain air plenum: Clean air is ducted to work area, increasing efficiency of particles being blown down into table, keeping clean air in the workers' breathing area, and has a cooling effect for the worker also.
2. Dual sided work stations. (DHYD2)
3. Clear enclosed work area.
4. Sealed fluorescent lighting.
5. Crane slots in regain plenum.
6. Up to 6' wide work surface available.

### SPECIFICATIONS:

1. 2, 3, 5 or 10 HP 230 / 460 v. TEFC Motor.
2. Direct-drive, non-overloading blower.
3. Air volume: 1,000 to 5,000 CFM.
4. Magnetic motor starter with pushbutton on/off.
5. Electronic water level control, magnehelic gauge.
6. Mist eliminating filters.
7. Clear, removable inspection and cleanout door.
8. 2" threaded drain connection on all but 10-2 model.
9. Steel or fiberglass grated work surface.
10. Cabinets: welded galvanized steel with two part coal tar epoxy coating on all interior surfaces.
11. Industrial enamel exterior coating (Gulf Blue).

05-09

CUSTOMER:  
CUSTOMER P.O.:  
PROJECT:  
ENGINEER:  
SALES REP.:  
IDENTIFICATION / TAGGING:

> [www.lev-co.com](http://www.lev-co.com) • 1.888.862.5356

**lev-co**

The device depicted and described hereon embodies proprietary information owned by the manufacturer. All design, manufacturing, reproduction, sales and patent rights regarding this device or drawing reserved except where explicit right is guaranteed in writing. We reserve the right to make design changes.

Drawn by: Janos B  
Date: 5/1/2008  
Scale: NTS  
Weight: N/A



**05-09 HYDROTRON DHYD1 SERIES  
Downdraft Table**  
Specification Drawing

Drawing No.: -  
Material: -  
File Name: (05-09) DHYD1 series - SD  
Product manufactured by: **FILTER 1**  
Sheet: 1/2

**AVAILABLE MODELS AND OPTIONS:**

Part #	Description
<b>Main System / Part</b>	
<input type="checkbox"/> F1-DHYD1-30-5-3R	DHYD1 Hydrotron Downdraft table c/w one (1) 36" x 30" table, 3000 CFM, 5 HP 230/3/60 or 575/3/60 motor (please specify voltage when ordering) and Regain (Push-Pull) system.
<input type="checkbox"/> F1-DHYD1-30-5-4R	DHYD1 Hydrotron Downdraft table c/w one (1) 48" x 30" table, 3000 CFM, 5 HP 230/3/60 or 575/3/60 motor (please specify voltage when ordering) and Regain (Push-Pull) system.
<input type="checkbox"/> F1-DHYD1-30-5-4-3R	DHYD1 Hydrotron Downdraft table c/w one (1) 48" x 36" table, 3000 CFM, 5 HP 230/3/60 or 575/3/60 motor (please specify voltage when ordering) and Regain (Push-Pull) system.
<input type="checkbox"/> F1-DHYD1-30-5-5R	DHYD1 Hydrotron Downdraft table c/w one (1) 60" x 30" table, 3000 CFM, 5 HP 230/3/60 or 575/3/60 motor (please specify voltage when ordering) and Regain (Push-Pull) system.
<input type="checkbox"/> F1-DHYD1-30-5-6R	DHYD1 Hydrotron Downdraft table c/w one (1) 72" x 30" table, 3000 CFM, 5 HP 230/3/60 or 575/3/60 motor (please specify voltage when ordering) and Regain (Push-Pull) system.
<input type="checkbox"/> F1-DHYD1-50-10-4R	DHYD1 Hydrotron Downdraft table c/w one (1) 48" x 30" table, 5000 CFM, 10 HP 230/3/60 or 575/3/60 motor (please specify voltage when ordering) and Regain (Push-Pull) system.
<input type="checkbox"/> F1-DHYD1-50-10-4-3R	DHYD1 Hydrotron Downdraft table c/w one (1) 48" x 36" table, 5000 CFM, 10 HP 230/3/60 or 575/3/60 motor (please specify voltage when ordering) and Regain (Push-Pull) system.
<input type="checkbox"/> F1-DHYD1-50-10-4-4R	DHYD1 Hydrotron Downdraft table c/w one (1) 48" x 48" table, 5000 CFM, 10 HP 230/3/60 or 575/3/60 motor (please specify voltage when ordering) and Regain (Push-Pull) system.
<input type="checkbox"/> F1-DHYD1-50-10-5-3R	DHYD1 Hydrotron Downdraft table c/w one (1) 60" x 36" table, 5000 CFM, 10 HP 230/3/60 or 575/3/60 motor (please specify voltage when ordering) and Regain (Push-Pull) system.
<input type="checkbox"/> F1-DHYD1-50-10-6-3R	DHYD1 Hydrotron Downdraft table c/w one (1) 72" x 36" table, 5000 CFM, 10 HP 230/3/60 or 575/3/60 motor (please specify voltage when ordering) and Regain (Push-Pull) system.
<input type="checkbox"/> F1-DHYD1-30-5-4-4R	DHYD1 Hydrotron Downdraft table c/w one (1) 48" x 48" table, 3000 CFM, 5 HP 230/3/60 or 575/3/60 motor (please specify voltage when ordering) and Regain (Push-Pull) system.
<input type="checkbox"/> F1-DHYD1-30-5-6-4R	DHYD1 Hydrotron Downdraft table c/w one (1) 72" x 48" table, 3000 CFM, 5 HP 230/3/60 or 575/3/60 motor (please specify voltage when ordering) and Regain (Push-Pull) system.
<input type="checkbox"/> F1-DHYD1-50-10-8-3R	DHYD1 Hydrotron Downdraft table c/w one (1) 96" x 36" table, 5000 CFM, 10 HP 230/3/60 or 575/3/60 motor (please specify voltage when ordering) and Regain (Push-Pull) system.
<input type="checkbox"/> F1-DHYD1-50-10-8-4R	DHYD1 Hydrotron Downdraft table c/w one (1) 96" x 48" table, 5000 CFM, 10 HP 230/3/60 or 575/3/60 motor (please specify voltage when ordering) and Regain (Push-Pull) system.

<b>Misc. Options (when ordering main unit)</b>	
<input type="checkbox"/> F1-DHYD-LWA	Low Water alarm Option for DHYD Downdraft tables
<input type="checkbox"/> F1-DHYD-OWA	Overflow water alarm option for DHYD downdraft tables
<input type="checkbox"/> F1-DHYD-CSR	Slot Crane Regain option for DHYD downdraft tables (Per Side for DHYD-2)

<b>Deduct Regain Option (When Ordering Main Unit)</b>	
<input type="checkbox"/> F1-DHYD1-30-5-3-REGAIN	DEDUCT Regain option for DHYD1-30-5-3R
<input type="checkbox"/> F1-DHYD1-30-5-4-REGAIN	DEDUCT Regain option for F1-DHYD1-30-5-4R; F1-DHYD1-30-5-4-3R; F1-DHYD1-30-5-4-4R
<input type="checkbox"/> F1-DHYD1-30-5-5-REGAIN	DEDUCT Regain option for DHYD1-30-5-5R
<input type="checkbox"/> F1-DHYD1-30-5-6-REGAIN	DEDUCT Regain option for DHYD1-30-5-6R; DHYD1-30-5-6-4R
<input type="checkbox"/> F1-DHYD1-50-10-4-REGAIN	DEDUCT Regain option for DHYD1-50-10-4R; DHYD1-50-10-4-3R; DHYD1-50-10-4-4R
<input type="checkbox"/> F1-DHYD1-50-10-5-3-REGAIN	DEDUCT Regain option for DHYD1-50-10-5-3R
<input type="checkbox"/> F1-DHYD1-50-10-6-3-REGAIN	DEDUCT Regain option for DHYD1-50-10-6-3R
<input type="checkbox"/> F1-DHYD1-50-10-8-REGAIN	DEDUCT for Regain option for DHYD1-50-10-8-3R; DHYD1-50-10-8-4R

05-09

CUSTOMER:  
 CUSTOMER P.O.:  
 PROJECT:  
 ENGINEER:  
 SALES REP.:  
 IDENTIFICATION / TAGGING:

> [www.lev-co.com](http://www.lev-co.com) • 1.888.862.5356



The device depicted and described hereon embodies proprietary information owned by the manufacturer. All design, manufacturing, reproduction, sales and patent rights regarding this device or drawing reserved except where explicit right is guaranteed in writing. We reserve the right to make design changes.

Drawn by: Janos B  
 Date: 5/1/2008  
 Scale: NTS  
 Weight: N/A

**05-09 HYDROTRON DHYD1 SERIES**  
**Downdraft Table**  
**Specification Drawing**

Drawing No.: -  
 File Name: (05-09) DHYD1 series - SD  
 Material: -  
 Product manufactured by: **FILTER 1**  
 Sheet: 2/2