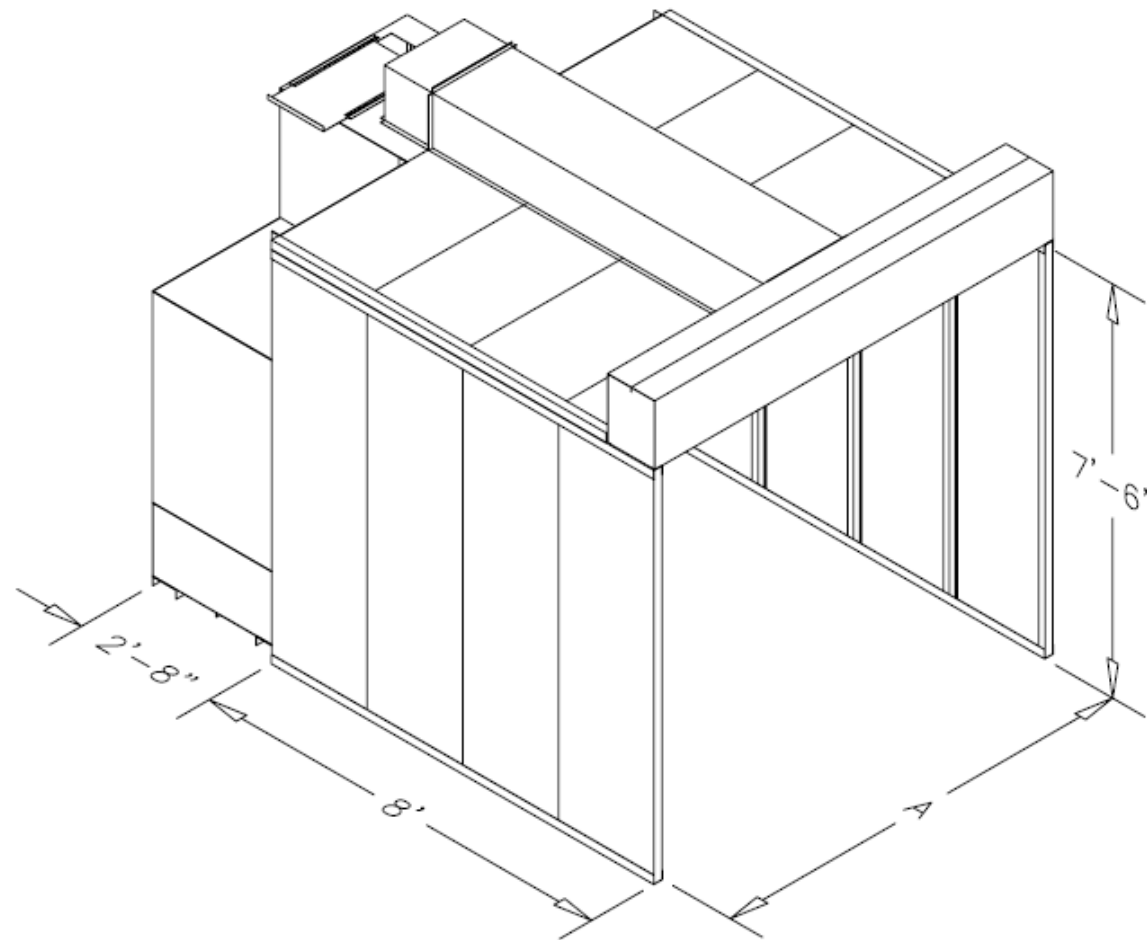


Hydrotron Mark II HPB Series Wet Type Environmental Control Booth

The Filter 1 Hydrotron Control Booth, integrating the booth enclosure and wet dust collection, is a safe and economic method of cleaning potentially volatile materials. The Hydrotron HPBs are generally used for working on large objects that won't fit on a table, or for multiple table top operations where several operators will be in the booth at the same time. These wet dust collection booths meet OSHA and NFPA guidelines for dust collectors located inside the building, allowing recirculation of in-plant, tempered air to conserve energy. The units remove heavy sparks from grinding and gouging, and filter respirable dust and contaminants from sanding, deburring, buffing, packaging, and processing.

The HPB series features a minimum of 300 FPM in the work zone, sound attenuating interior surfaces, and fluorescent lighting with dust tight lens. The booths may be equipped with the Regain Air, "Push/Pull" technology pioneered by Filter 1 to increase capture velocity, up to 800 FPM in the "breathing zone".



SPECIFICATIONS:

1. 230 / 460 v., 3 Phase, TEFC motor.
2. Direct-drive, non-overloading blower.
3. Magnetic motor starter with pushbutton on/off.
4. Electronic water level control, magnetic gauge.
5. Mist eliminating filters.
6. 2" threaded drain connection.
7. Cabinets: welded galvanized steel with two part coal tar epoxy coating on all interior surfaces.
8. Galvanized steel booth walls with 2" vinyl coated fiberglass insulation.
9. Sealed fluorescent lighting.
10. Industrial enamel exterior coating (Gulf Blue).

OPTIONS:

- * Low water cut-off switch
- * Overflow water cut-off switch.
- * Explosion proof motor.
- * Stainless steel construction.
- * HEPA safety after filters with alarms.
- * Custom paint color.

Hydrotron HPB Series:

Model	CFM	HP	Width "A"
HPB 8	6,000	10	8'
HPB 12	9,000	15	12'
HPB 16	12,000	10X2	16'
HPB 20	12,000	10X2	20'
HPB 24	18,000	15X2	24'
HPB 32	18,000	10X3	32'
HPB 36	27,000	15X3	36'

08-05

CUSTOMER:
CUSTOMER P.O.:
PROJECT:
ENGINEER:
SALES REP.:
IDENTIFICATION / TAGGING:

> www.lev-co.com • 1.888.862.5356

lev-co

The device depicted and described hereon embodies proprietary information owned by the manufacturer. All design, manufacturing, reproduction, sales and patent rights regarding this device or drawing reserved except where explicit right is guaranteed in writing. We reserve the right to make design changes.

Drawn by: JANOS-B
Date: 5/1/2008
Scale: NTS
Weight: N/A



**08-05 Mark II
HPB Booth**

Specification Drawing

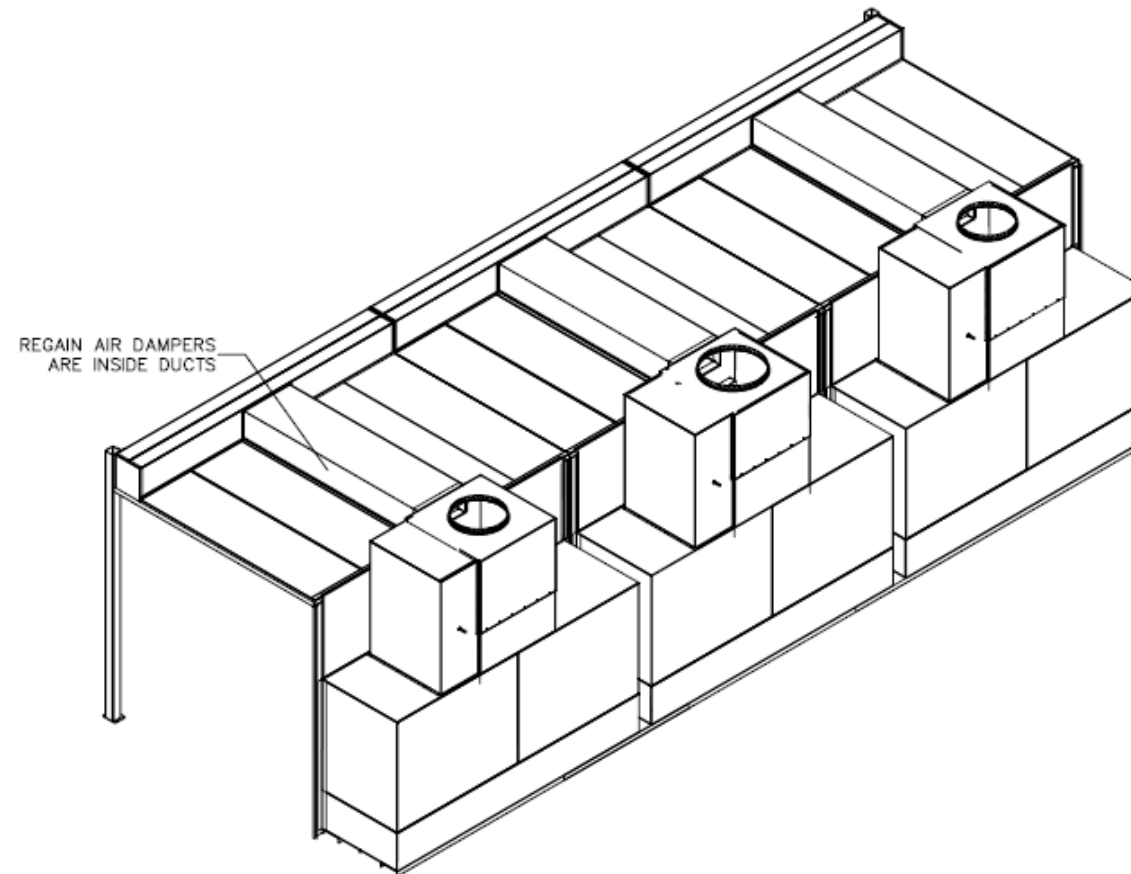
Drawing No.: - File Name: (08-05) Mark II HPB - SD
Material: - Product manufactured by: **FILTER 1** Sheet: 1/2

MODELS & OPTIONS

Part # Description

Main System / Part

<input type="checkbox"/>	MII-HPB-8-1-1x10	6,000 CFM - 8'W x 8'D x 7.5'H Wet Booth c/w 1x 10 HP blower 575/3/60
<input type="checkbox"/>	MII-HPB-12-1-1x15	9,500 CFM - 12'W x 8'D x 7.5'H Wet Booth c/w 1x 15 HP blower 575/3/60
<input type="checkbox"/>	MII-HPB-16-2-2x10	12,000 CFM - 16'W x 8'D x 7.5'H Wet Booth c/w 2 x 10 HP blowers 575/3/60
<input type="checkbox"/>	MII-HPB-20-2-1-10+1x15	15,500 CFM - 20' W x 8' D x 7.5' H Wet Booth c/w 1 x 10 HP blower + 1 x 15 HP blower 575/3/60
<input type="checkbox"/>	MII-HPB-24-2-2x15	19,000 CFM - 24' W x 8' D x 7.5' H Wet Booth c/w 2 x 15 HP blowers 575/3/60
<input type="checkbox"/>	MII-HPB-28-3-2x10+1x15	27,500 CFM - 28' W x 8' D x 7.5' H Wet Booth c/w 2 x 10 HP blowers + 1 x 15 HP blower 575/3/60
<input type="checkbox"/>	MII-HPB-32-3-1x10+2x15	25,000 - 32' W x 8' D x 7.5' H Wet Booth c/w 1 x 10 HP blower + 2 x 15 HP blowers 575/3/60
<input type="checkbox"/>	MII-HPB-36-3-3x15	28,500 CFM - 36' W x 8' D x 7.5' H Wet Booth c/w 3 x 15 HP blowers 575/3/60



08-05

CUSTOMER:
 CUSTOMER P.O.:
 PROJECT:
 ENGINEER:
 SALES REP.:
 IDENTIFICATION / TAGGING:

> www.lev-co.com • 1.888.862.5356

lev-co

The device depicted and described hereon embodies proprietary information owned by the manufacturer. All design, manufacturing, reproduction, sales and patent rights regarding this device or drawing reserved except where explicit right is guaranteed in writing. We reserve the right to make design changes.

Drawn by: JANOS-B
 Date: 5/1/2008
 Scale: NTS
 Weight: N/A

08-05 Mark II
 HPB Booth

Specification Drawing



Drawing No.: -
 Material: -
 File Name: (08-05) Mark II HPB - SD
 Product manufactured by: **FILTER 1**
 Sheet: 2/2