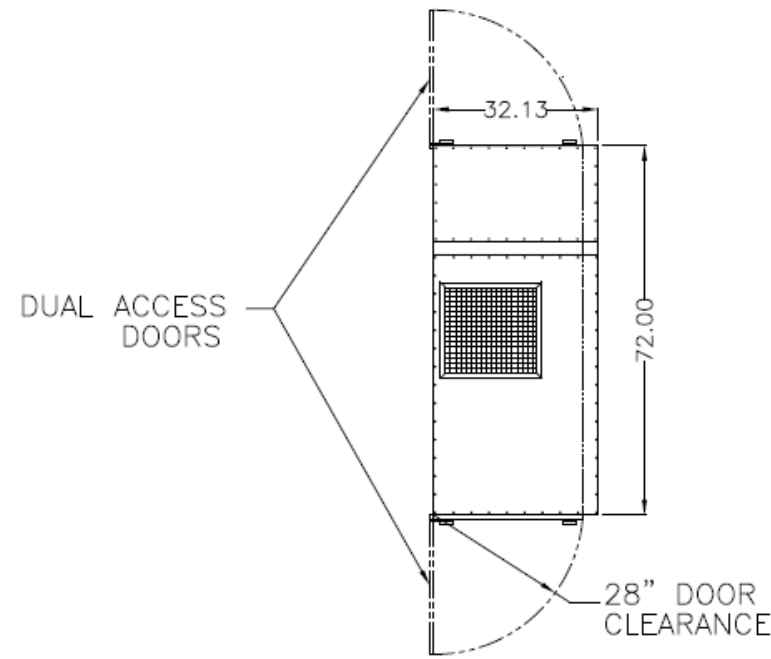


SPECIFICATIONS:



CONSTRUCTION: 16 Gauge painted steel cabinet with Ultra-Seal filter sealing system, dual side access doors to filters, and a 1410 rpm belt driven, ball bearing, Class II blower with 4-way adjustable airfoil blade exhaust grille. Motor wired to junction box outside unit. Motor starters/disconnects not included.

WEIGHT: 1030 lbs.

AIRFLOW: 9000 CFM
6000 CFM W/HEPA

ELECTRICAL: 10 HP 208-230/460/3/60, 28.5-28.4/14.2 amps

NOISE: 86 dBA /80 dBA with silencer

FILTER SEAL: Ultra-Seal, welded picture frame with positive sealing filter locking mechanism for all main filters, HEPA filter and adsorber modules (when used). Slide in tracks shall be used for prefilters only

FIRE SUPPRESSION: Equipment provided by others.

PREFILTERS: (3) 4" Pleat, 30%, std.
 (3) Aluminum mesh, opt.
 (3) 2" polyester, opt.
 (3) Chevron filter, opt.

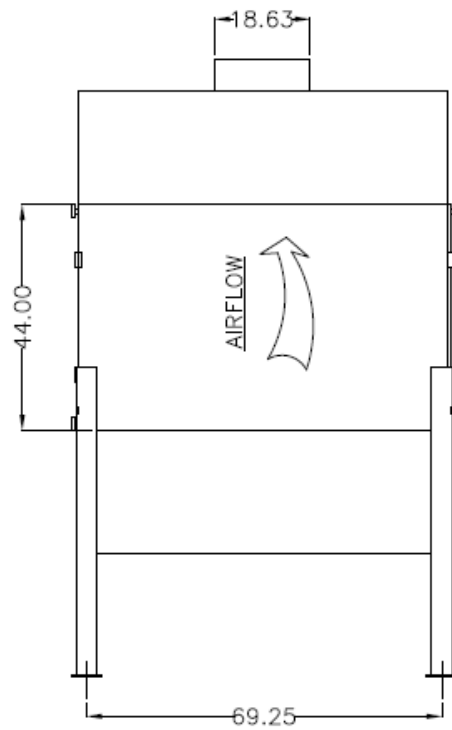
MAIN FILTERS: (3) 120 ft² multi-pocket 65%, std.
 (3) 95% - opt.

AFTER FILTERS: (3) Easy clean, opt.
 (3) 4" pleat prefilters followed by (3) 66 ft², 95% bag filters and (3) 99.97% HEPA filters.
 (3) 95% D.O.P. HEPA, opt.

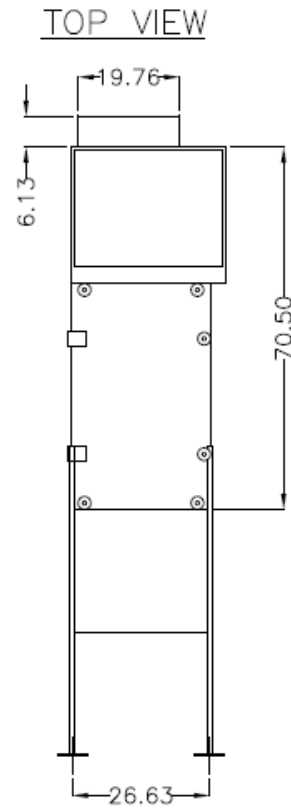
AD OPTION: (3) 4" pleat prefilters followed by (3) 66 ft², 95% bag filters, (6) refillable AD modules, 25 lb. capacity each, and (3) 2" pleat afterfilters.

OTHER OPTIONS: Pressure gauge kit indicates filter changes
 Source capture plenum
 Drains, 3/4" NPT
 Silencer
 1650 rpm Blower - High static
 1725 rpm Blower - High static

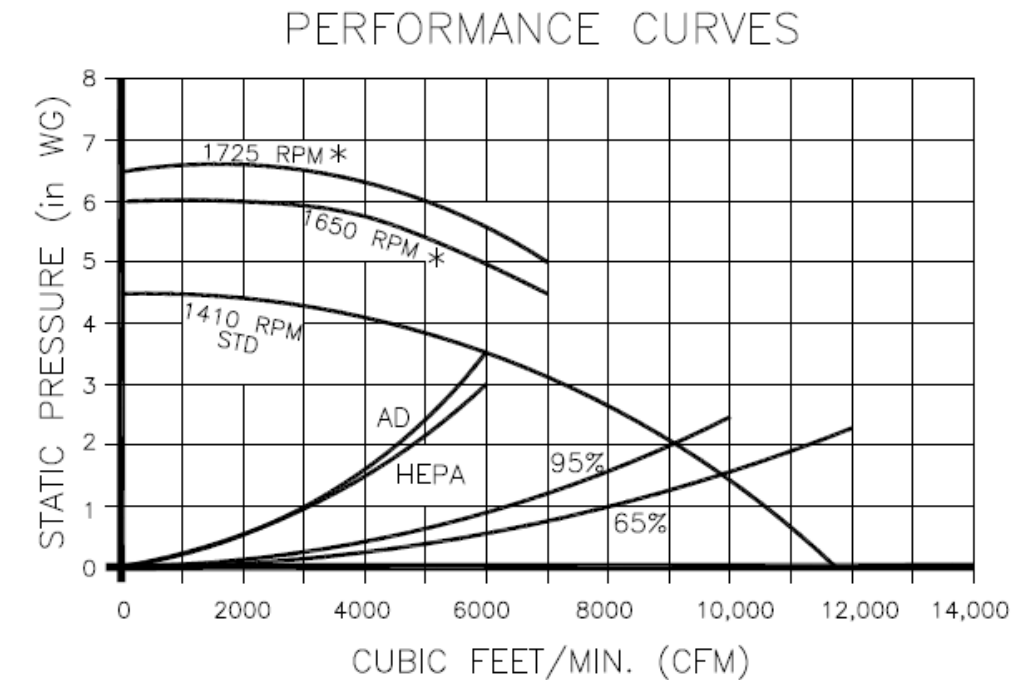
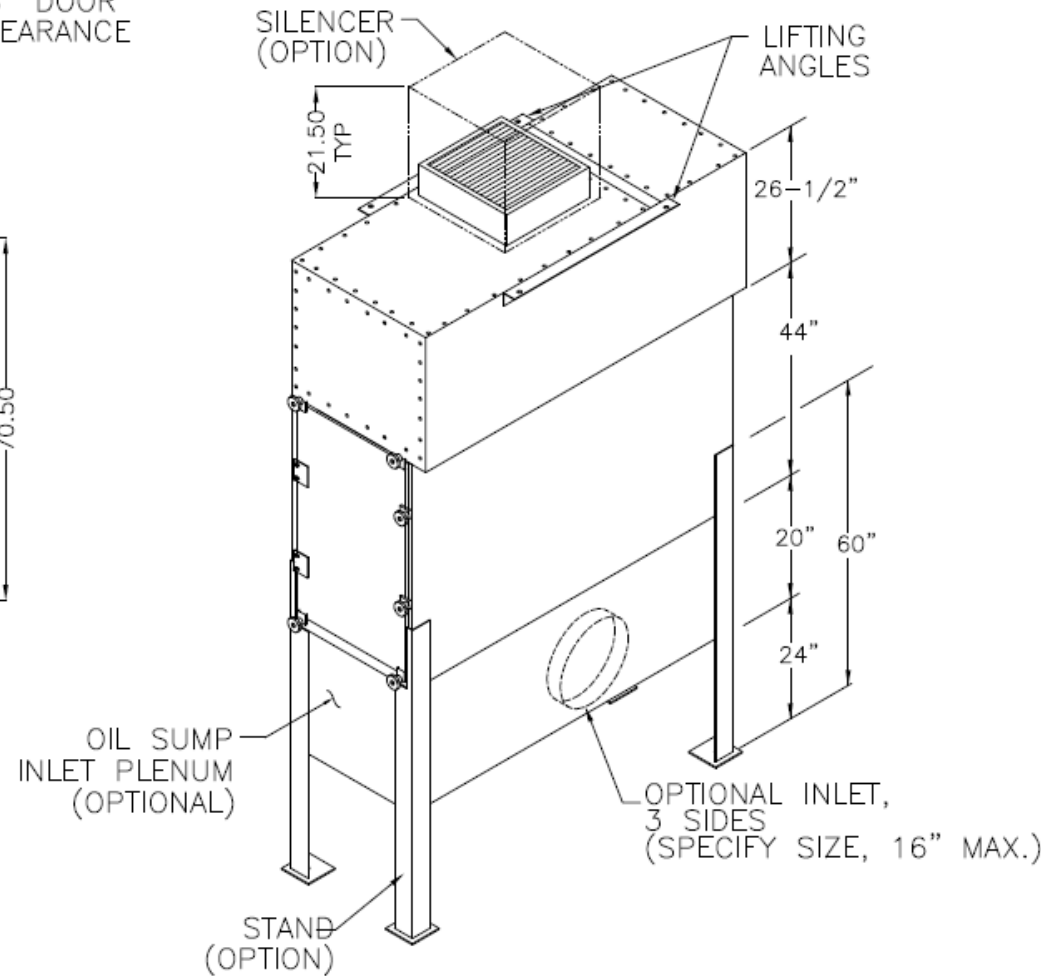
* AFS FILTER EFFICIENCIES BASED ON ASHRAE 52-76 TEST METHOD



SIDE VIEW



FRONT VIEW



* IF LESS THAN 5" TOTAL S/P MOTOR MAY OVER AMP.

10-04

CUSTOMER:
CUSTOMER P.O.:
PROJECT:
ENGINEER:
SALES REP.:
IDENTIFICATION / TAGGING:

> www.lev-co.com • 1.888.862.5356

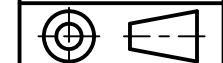
lev-co

The device depicted and described hereon embodies proprietary information owned by the manufacturer. All design, manufacturing, reproduction, sales and patent rights regarding this device or drawing reserved except where explicit right is guaranteed in writing. We reserve the right to make design changes.

Drawn by: JANOS-B
Date: 5/1/2008
Scale: NTS
Weight: N/A

**10-04 F360
Air Cleaner**

Specification Drawing

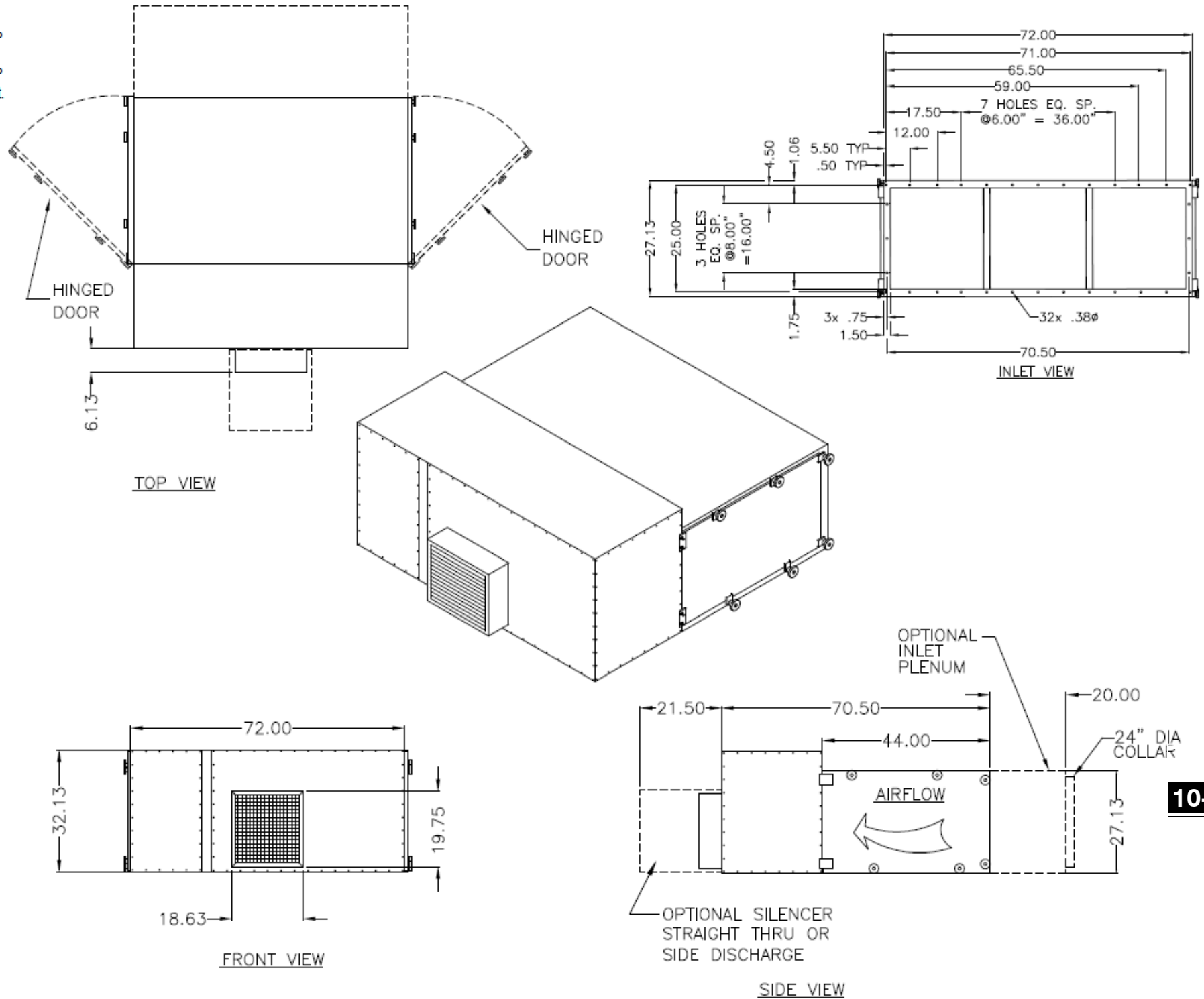


Drawing No.: - File Name: (10-04) F360 - SD
Material: Product manufactured by: Sheet: 1/2



MODELS & OPTIONS

Part #	Description
Main System / Part	
<input type="checkbox"/> F360-2	3000-6000 CFM unit includes (3) 4" pleated 30% prefilters (3) 65% bag filters 120 sq. ft. ea 10 HP TEFC motor. Please specify voltage when ordering.
<input type="checkbox"/> F360-VERT-1	3000-6000 CFM unit includes (3) 4" pleated 30% prefilters (3) 65% bag filters 120 sq. ft. ea 10 HP TEFC motor. Source capture plenum seam welded 24" floor stand and vertical door arrangement. Please specify voltage when ordering.
Filter Options (when ordering main unit)	
<input type="checkbox"/> F360-2P	2" Polyester Prefilter Option for Standard F360 Unit
<input type="checkbox"/> F360-AD	AD Module Option for Standard F360 Unit
<input type="checkbox"/> F360-CV	Chevron Filter Option for Standard F360 Unit
<input type="checkbox"/> F360-EC	Easy Clean Bag Filter Option for Standard F360 Unit
<input type="checkbox"/> F360-HEPA	99.97% DOP HEPA Filter Option for Standard F360 Unit
<input type="checkbox"/> F360-95%	95% Bag Filter Option for Standard F360 Unit
<input type="checkbox"/> F360-2A	2" Mesh Prefilter Option for Standard F360 Unit
<input type="checkbox"/> F360-95DOP	95% DOP HEPA Filter Option for Standard F360 Unit
Preventative Maintenance Pressure Gauges, etc. (when ordering main unit)	
<input type="checkbox"/> F360-PG-10	0-10" magna-helic pressure gauge, approximately 5" diameter size. Surface mounted.
Sound Attenuation	
<input type="checkbox"/> F360-S	Silencer. (Add 21" to length & 50 lbs to ship weight).
<input type="checkbox"/> F360-S-EXT	Silencer Option for Standard F360 Unit
Replacement filters - (Quantity discounts available upon request)	
<input type="checkbox"/> 2AF90006	Adsorber v-bank module.
<input type="checkbox"/> 2AF19032	Easy Clean Bag Filter
<input type="checkbox"/> 2AF49100	Chevron Filter
<input type="checkbox"/> 2AZ20004	2" Polyester Prefilter 24" x 24"
<input type="checkbox"/> 7FB65119	65% Short Bag Filter
<input type="checkbox"/> 7FB65132	65% Bag Filter
<input type="checkbox"/> 7FB90119	95% Short Bag Filter
<input type="checkbox"/> 7FB90132	95% Bag Filter
<input type="checkbox"/> 7FJ95112	95% @ 0.3 micron DOP filter c/w metal frame
<input type="checkbox"/> 7FJ99113	99.97% @ 0.3 micron HEPA Filter, steel frame (24" x 24" x 12")
<input type="checkbox"/> 7FP30102	24"x24" x2" Pleated Prefilter
<input type="checkbox"/> 7FP30104	24"x24"x4"-30%-Pleated Prefilter
<input type="checkbox"/> CFH-2-10	Refillable Charcoal Filter Holder (24" x 24" x 2"). Holds 10 lbs of charcoal. Charcoal not included.
<input type="checkbox"/> Charcoal-18	18 lbs. of activated charcoal
Installation Option & Accessories	
<input type="checkbox"/> F360-OTD	Outdoor Option for Standard F360 Unit
<input type="checkbox"/> F360-SP	Source Capture Plenum Option for Standard F360 Unit
<input type="checkbox"/> F360-IA	Additional Inlet Collar Option for Standard F360 Unit
<input type="checkbox"/> F360-STAND	24" Floor Stand Option for Standard F360 Unit



10-04

CUSTOMER:	
CUSTOMER P.O.:	
PROJECT:	
ENGINEER:	
SALES REP.:	
IDENTIFICATION / TAGGING:	

www.lev-co.com • 1.888.862.5356



The device depicted and described hereon embodies proprietary information owned by the manufacturer. All design, manufacturing, reproduction, sales and patent rights regarding this device or drawing reserved except where explicit right is guaranteed in writing. We reserve the right to make design changes.

Drawn by:	JANOS-B
Date:	5/1/2008
Scale:	NTS
Weight:	N/A

10-04 F360	
Air Cleaner	
Specification Drawing	
Drawing No.: -	File Name: (10-04) F360 - SD
Material:	Product manufactured by:
Airflow SYSTEMS INC.	
Sheet: 2/2	