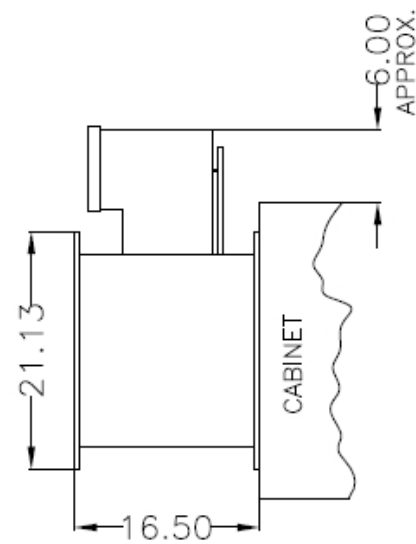
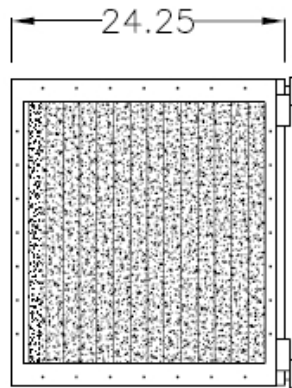


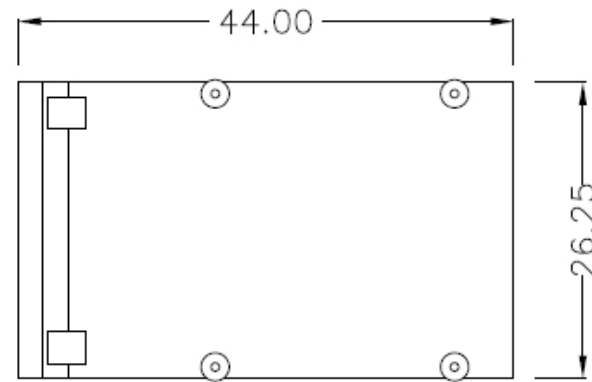
TOP VIEW



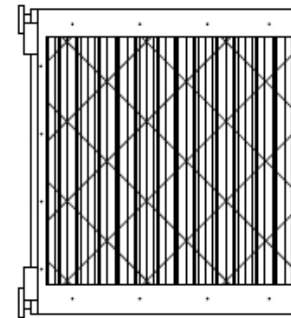
DETAIL "A"



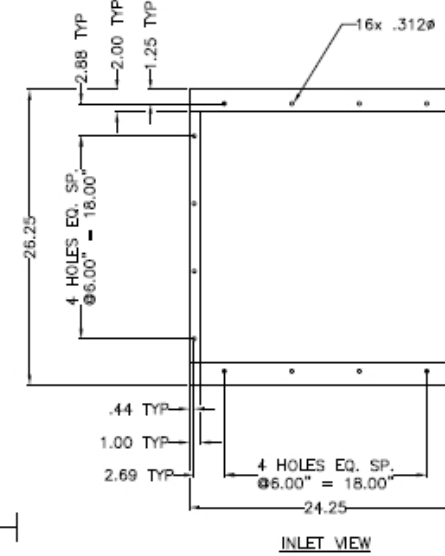
OUTLET



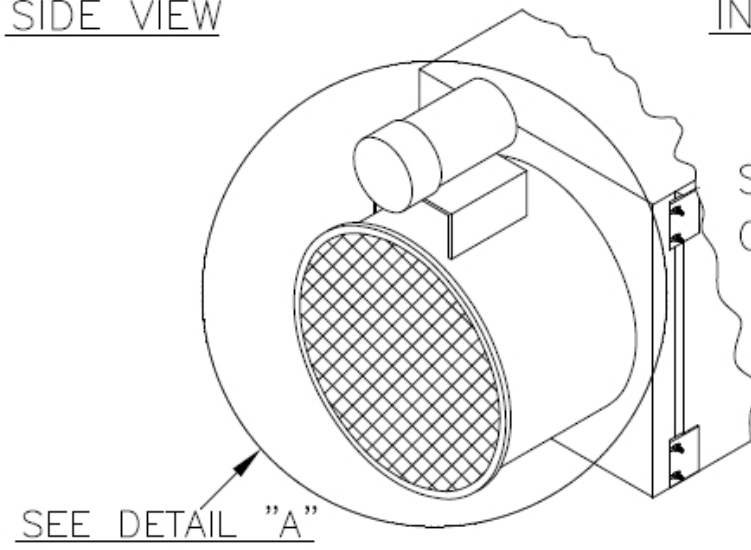
SIDE VIEW



INLET



INLET VIEW



SHOWN WITH
OPTIONAL MOTOR

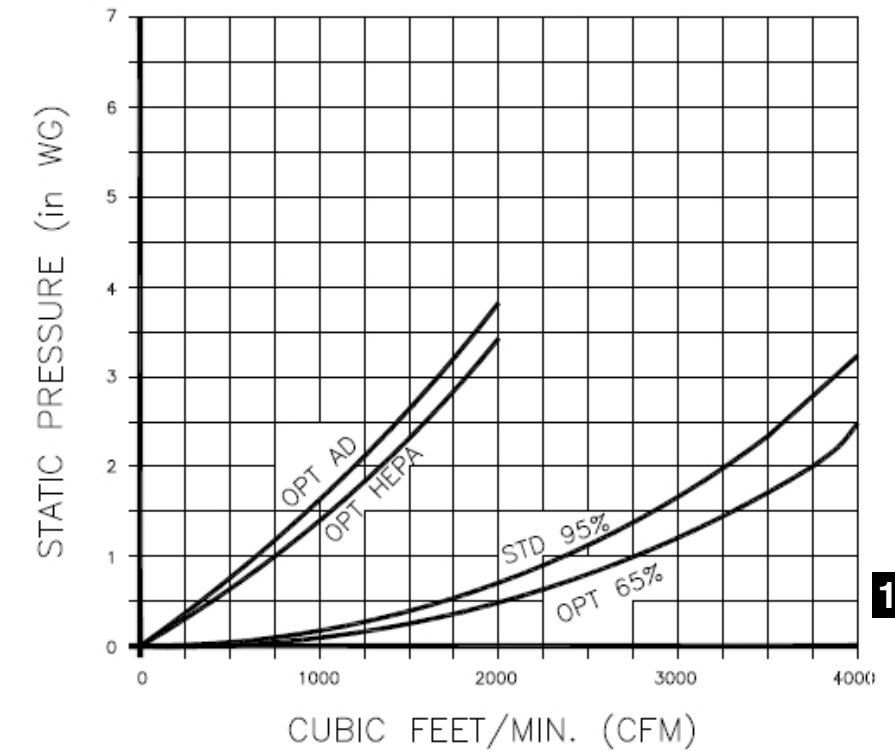
SPECIFICATIONS:

- CONSTRUCTION:** 16 Gauge painted steel cabinet finished with 2-part chemical and oil resistant paint. Includes Ultra-Seal™ filter mounting system and a hinged side access door to filters. Blowerless.
- WEIGHT:** 155 lbs.
- AIRFLOW:** 2500 CFM
2000 CFM W/HEPA
- ELECTRICAL:** Optional 1HP motor, 115/208-230/1/60, 13.0/6.8-6.5 amps
- FILTER SEAL:** Ultra-Seal™ welded picture frame with positive sealing filter locking mechanism for all main filters, HEPA filter and adsorber modules (when used). Slide in tracks shall be used for prefilters only.
- FIRE SUPPRESSION:** Equipment provided by others.

- PREFILTERS:**
- (1) 4" Pleated std.
 - (1) 2" Aluminum mesh, opt.
 - (1) 2" poly, 4 ft.² opt.
 - (1) Chevron filter, opt.
- MAIN FILTERS:**
- (1) 120 ft.² multi-pocket 95%, std.
 - (1) 65%, opt.
 - (1) Easy clean, opt.
- AFTER FILTERS:** (1) HEPA filter, 99.97% D.O.P., preceded by 95% bag filter, 59 ft.², 4" pleat, opt.
- AD OPTION:** (2) 25 lb. adsorber modules, refillable, with 59 ft.² 95% short bag filter (1), and 2" pleated final filter, opt.
- OTHER OPTIONS:**
- Pressure gauge kit indicates filter changes
 - Source capture plenum/outlet plenum
 - 3/4" NPT Drain

* AFS FILTER EFFICIENCIES BASED ON ASHRAE 52-76 TEST METHOD

PERFORMANCE CURVES



10-06

CUSTOMER:
CUSTOMER P.O.:
PROJECT:
ENGINEER:
SALES REP.:
IDENTIFICATION / TAGGING:

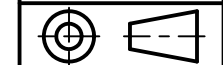
> www.lev-co.com • 1.888.862.5356

lev-co

The device depicted and described hereon embodies proprietary information owned by the manufacturer. All design, manufacturing, reproduction, sales and patent rights regarding this device or drawing reserved except where explicit right is guaranteed in writing. We reserve the right to make design changes.

Drawn by:	JANOS-B
Date:	5/1/2008
Scale:	NTS
Weight:	N/A

**10-06 200
Filter Pack**
Specification Drawing



Drawing No.:	-	File Name:	(10-06) 200 Filter Pack - SD
Material:	-	Product manufactured by:	Airflow SYSTEMS INC.
			Sheet: 1/2

MODELS & OPTIONS

Part #	Description
<u>Main System / Part</u>	
<input type="checkbox"/> 200	Modular air cleaner, blower less. Includes 4" pleated 30% prefilter, 95% main filter, 120 sq. ft.

Filter Options (when ordering main unit)

<input type="checkbox"/> 200-AD	AD Module Option for Standard 200 Unit. Order Charcoal separately.
<input type="checkbox"/> 200-CV	Chevron Filter Option for Standard 200 Unit
<input type="checkbox"/> 200-EC	Easy Clean Bag Filter Option for Standard 200 Unit
<input type="checkbox"/> 200-HEPA	99.97% DOP HEPA Filter Option for Standard 200 Unit
<input type="checkbox"/> 200-65	65% Bag Filter Option for Standard 200 Unit
<input type="checkbox"/> 200-2A	2" Mesh Prefilter Option for Standard 200 Unit
<input type="checkbox"/> 200-95DOP	95% DOP HEPA Filter Option for Standard 200 Unit

Preventative Maintenance Pressure Gauges, etc. (when ordering main unit)

<input type="checkbox"/> 200-PG-10	0-10" magna-helic pressure gauge, approximately 5" diameter size. Surface mounted.
------------------------------------	--

Misc. Options

<input type="checkbox"/> 200-DK	Drain kit for 200 unit (2 kits needed with Chevron Option)
---------------------------------	---

BI (Backward Inclined) Centrally Ducted Fans (Motor Starter not included)

<input type="checkbox"/> FAN-0.75-RAD3600-8	Fan, 600 CFM (free-blowing) air and maximum static pressure of 2.75" of Static Pressure W.G.. Motor is direct mounted for Low maintenance and ease of installation.
<input type="checkbox"/> FAN-1.5-RAD3600-9	Fan, 1200 CFM (free-blowing) air and maximum static pressure of 3.20" of Static Pressure W.G.. Motor is direct mounted for Low maintenance and ease of installation.
<input type="checkbox"/> FAN-3.0-RAD3600-11	Fan, 1800 CFM (free-blowing) air and maximum static pressure of 5.00" of Static Pressure W.G.. Motor is direct mounted for Low maintenance and ease of installation.

Replacement filters - (Quantity discounts available upon request)

<input type="checkbox"/> 2AF90006	Adsorber v-bank module.
<input type="checkbox"/> 2AF19032	Easy Clean Bag Filter
<input type="checkbox"/> 2AF49100	Chevron Filter
<input type="checkbox"/> 2AZ20004	2" Polyester Prefilter 24" x 24"
<input type="checkbox"/> 7FB65119	65% Short Bag Filter
<input type="checkbox"/> 7FB65132	65% Bag Filter
<input type="checkbox"/> 7FB90119	95% Short Bag Filter
<input type="checkbox"/> 7FB90132	95% Bag Filter
<input type="checkbox"/> 7FJ95112	95% @ 0.3 micron DOP filter c/w metal frame
<input type="checkbox"/> 7FJ99113	99.97% @ 0.3 micron HEPA Filter, steel frame (24" x 24" x 12")
<input type="checkbox"/> 7FP30102	24"x24" x2" Pleated Prefilter
<input type="checkbox"/> 7FP30104	24"x24"x4"-30%-Pleated Prefilter

Installation Option & Accessories

<input type="checkbox"/> 200-ASSY	Assemble 2 Units Together Option for Standard 200 Unit
<input type="checkbox"/> 200-SP	Source Capture Plenum Option for Standard 200 Unit
<input type="checkbox"/> 200-IA	Additional Inlet Collar Option for Standard 200 Unit

10-06

CUSTOMER:
CUSTOMER P.O.:
PROJECT:
ENGINEER:
SALES REP.:
IDENTIFICATION / TAGGING:


www.lev-co.com • 1.888.862.5356



The device depicted and described hereon embodies proprietary information owned by the manufacturer. All design, manufacturing, reproduction, sales and patent rights regarding this device or drawing reserved except where explicit right is guaranteed in writing. We reserve the right to make design changes.

Drawn by:	JANOS-B
Date:	5/1/2008
Scale:	NTS
Weight:	N/A

10-06 200 Filter Pack	
Specification Drawing	
Drawing No.: -	File Name: (10-06) 200 Filter Pack - SD
Material:	Product manufactured by: Airflow SYSTEMS INC.
Sheet: 2/2	