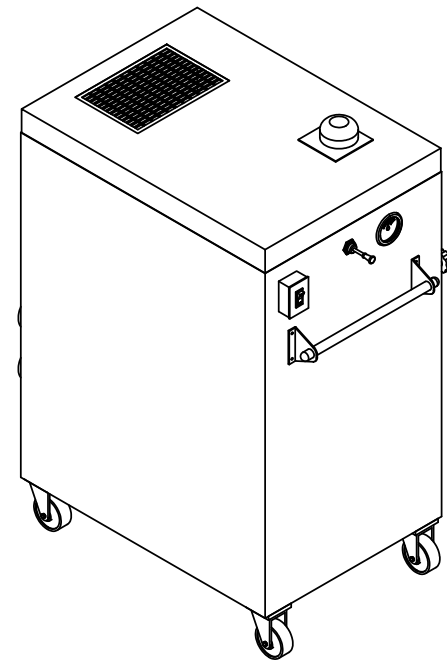
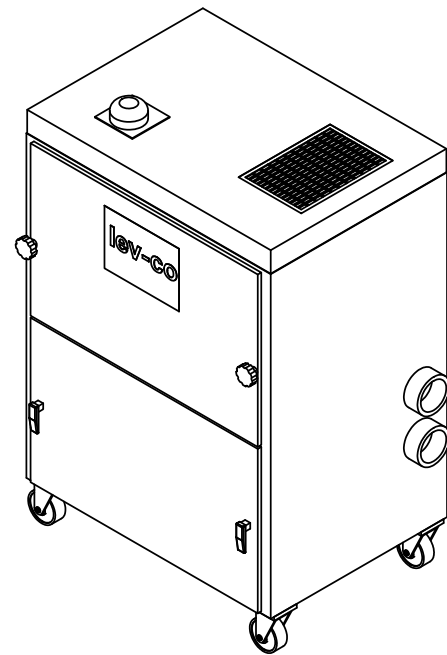


PORTABLE UNIT



CONSTRUCTION: 12 Gauge steel cabinet finished with a 2-part chemical and oil resistant finish. Includes front access doors to filters and motor, removable 8" deep dust pan, 5" swivel casters, and self-cleaning Vibra_Pulse backflush system. Motor wired to junction box outside unit. Motor starters/disconnects not included.

WEIGHT: 680 lbs.

AIRFLOW: 510 CFM, 93" wg max (10 HP, 60 HZ)
390 CFM, 83" wg max (10 HP, 50 HZ)
280 CFM, 85" wg max (5 HP, 60 HZ)

NOISE: 77 dBA, / 72 dBA with muffler

ELECTRICAL 10 HP 208—230/460/3/60, 27.5—27.2/13.6 amps, std.
10 HP 190/380/3/50, 27/13.5 amps, opt.
5 HP 208—230/460/3/60, 12.0/6.0 amps. opt

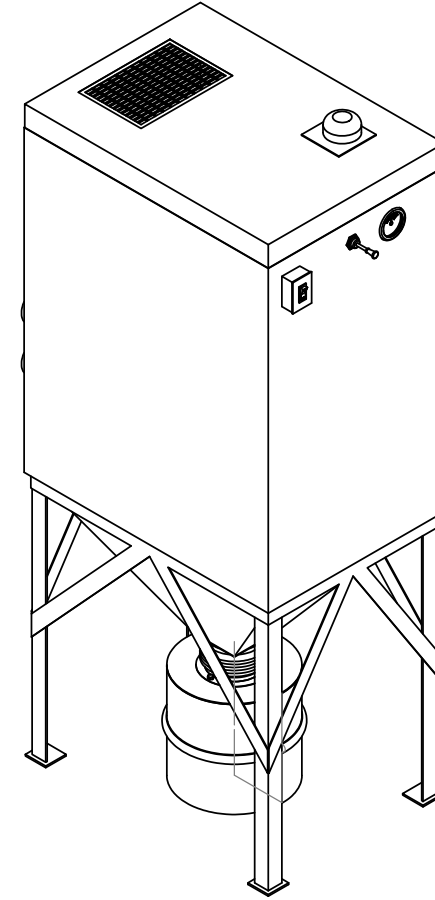
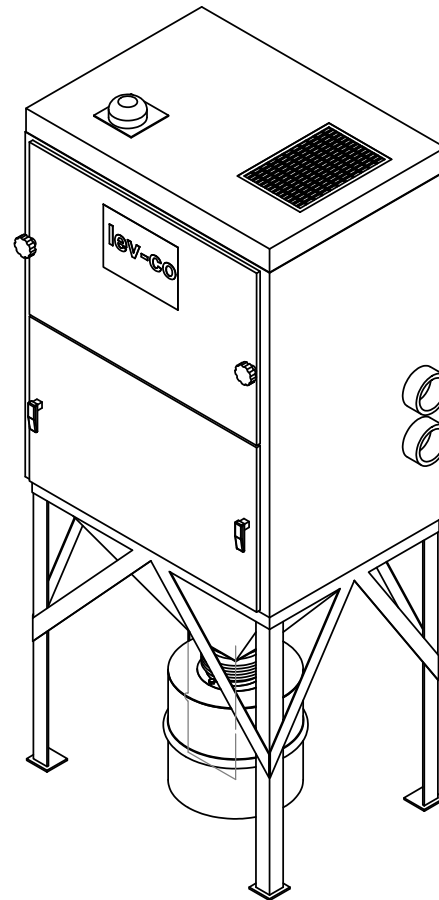
FILTER SEAL: Positive sealing filter locking mechanism for all main filters. Requires no tools.

SPECIFICATIONS:

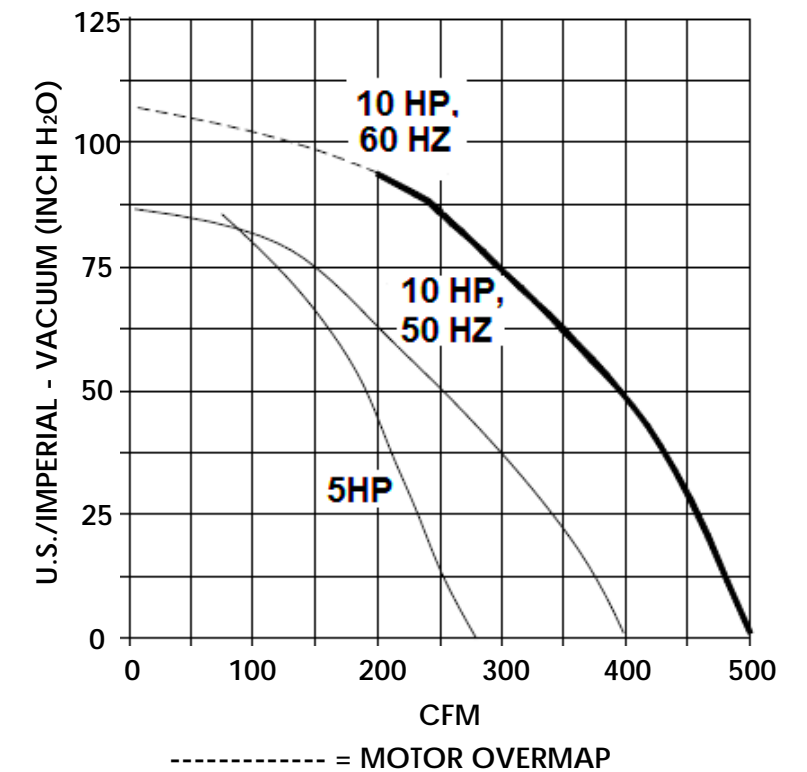
- MAIN FILTERS:** (2) CLEAN 2 cartridges_ 1 6"x 11.50". 150 sq. ft. ea., std.
 (2) FII3ERDUST cartridge, opt.
- AFTER FILTERS:** (1) External HEPA filter, 99.97%, apt.
- AD OPTION:** (1) 25 lb. external adsarber module, refillable
- OTHER OPTIONS:** Pressure gauge kit indicates filter changes
 5 Gal. happer and stand
 Muffler
 Auto Clean

• LEV-CO FILTER EFFICIENCIES BASED ON ASHRAE 52—76 TEST METHOD

STATIC UNIT



PERFORMANCE CURVES



CUSTOMER:
CUSTOMER P.O.:
PROJECT:
ENGINEER:
SALES REP.:
IDENTIFICATION / TAGGING:

> www.lev-co.com • 1.888.862.5356

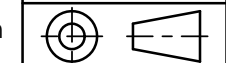


The device depicted and described hereon embodies proprietary information owned by the manufacturer. All design, manufacturing, reproduction, sales and patent rights regarding this device or drawing reserved except where explicit right is guaranteed in writing. We reserve the right to make design changes.

Drawn by: Janos B
Date: 1/12/2010
Scale: NTS
Weight: N/A

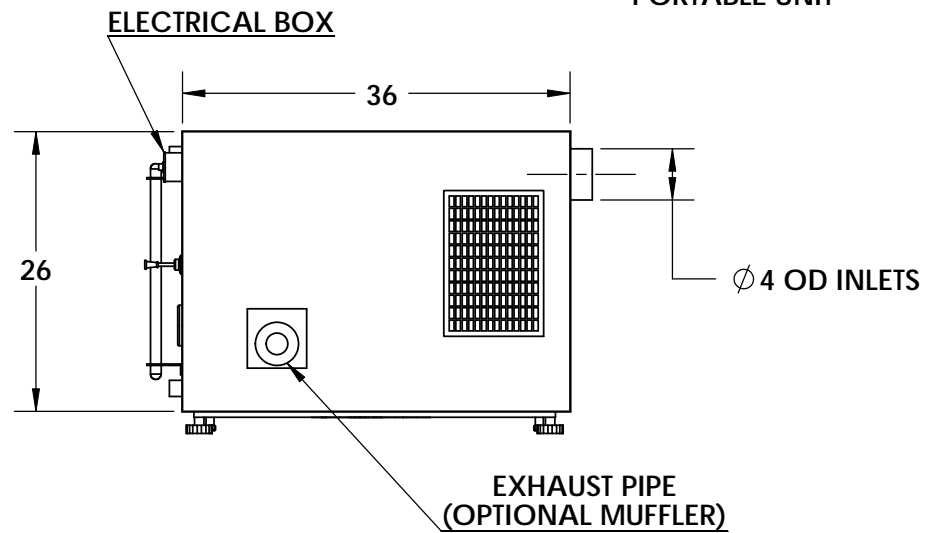
(12-04) V410 Portable (on wheels) or Static (with legs, hooper and 5 ga. drum)

Specification Drawing

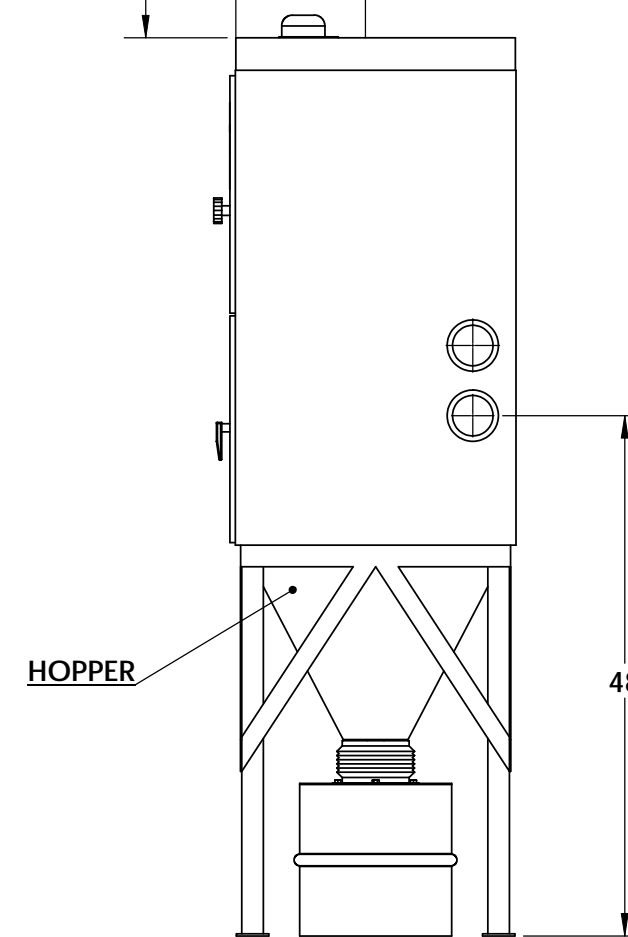
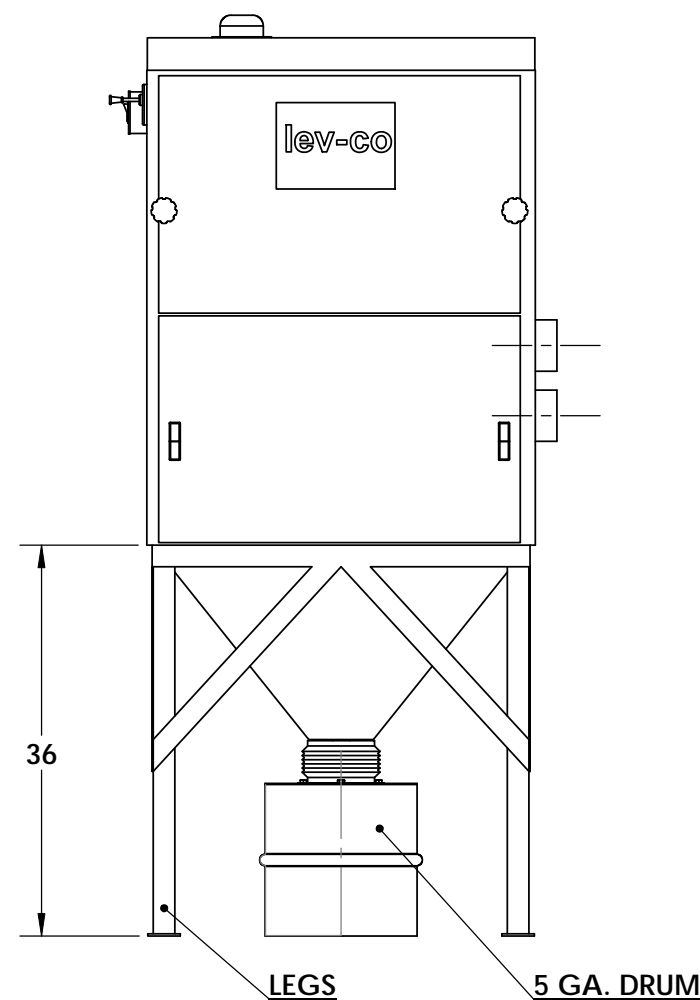
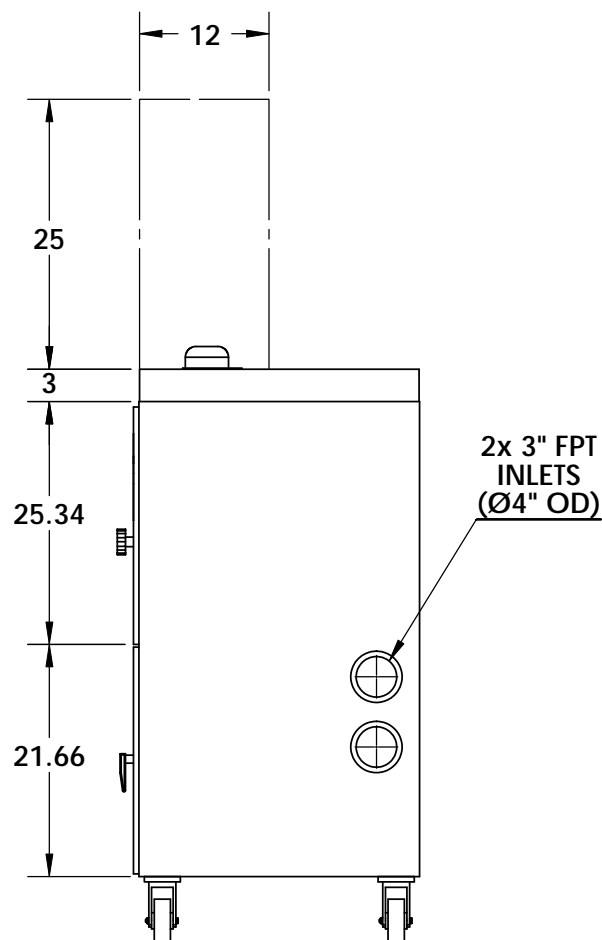
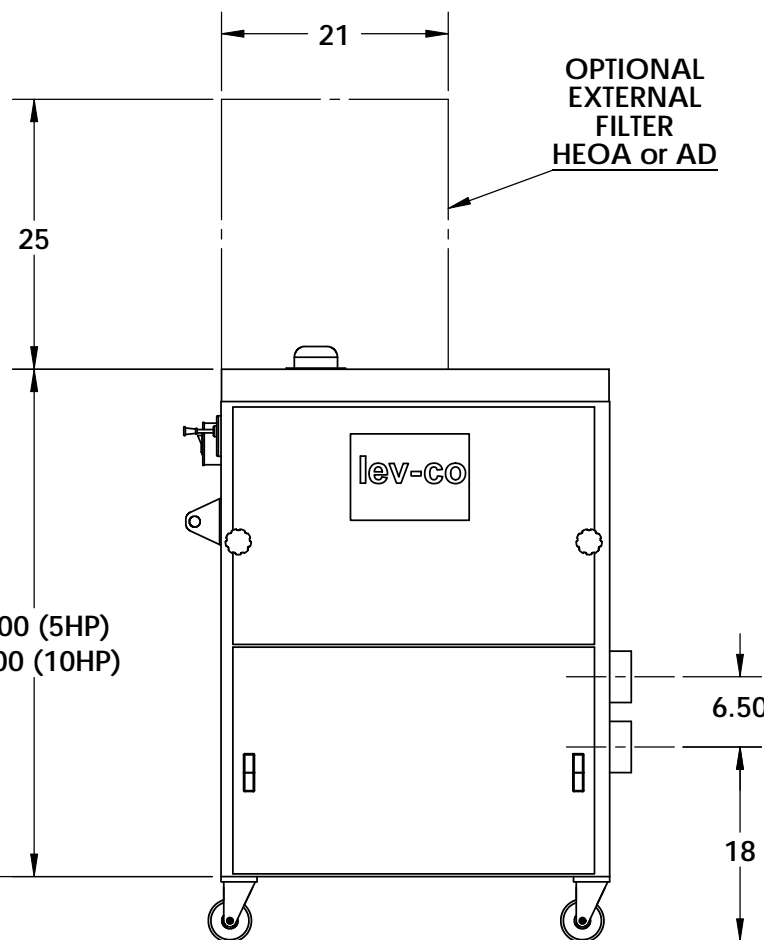
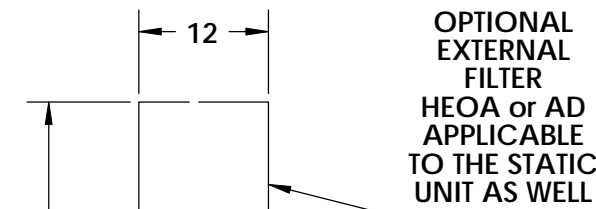
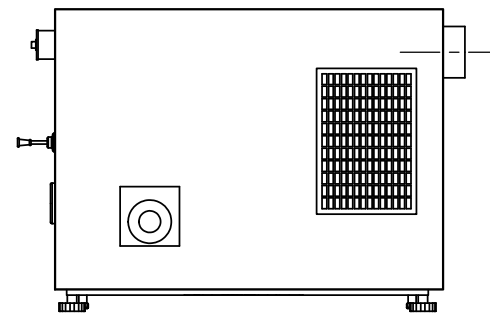


Drawing No.: -
Material: -
File Name: (12-04) V410 - SD
Sheet: 1/3

PORTABLE UNIT



STATIC UNIT



CUSTOMER:
CUSTOMER P.O.:
PROJECT:
ENGINEER:
SALES REP.:
IDENTIFICATION / TAGGING:

> www.lev-co.com • 1.888.862.5356



The device depicted and described hereon embodies proprietary information owned by the manufacturer. All design, manufacturing, reproduction, sales and patent rights regarding this device or drawing reserved except where explicit right is guaranteed in writing. We reserve the right to make design changes.

Drawn by:	Janos B
Date:	1/12/2010
Scale:	NTS
Weight:	N/A

(12-04) V410 Portable (on wheels) or Static (with legs, hooper and 5 ga. drum)	
Specification Drawing	
Drawing No.:	-
File Name:	(12-04) V410 - SD
Material:	-
Sheet:	2/3

MODELS AND OPTIONS:

Part #	Description
<input type="checkbox"/> V410	Portable, high vacuum, cartridge collector, with (2) CLEAN-2® cartridge filters (150 sq.ft. of media each), manual VIBRA-PULSE® filter cleaning systems, and a 10 Hp TEFC motor, 208-230/460/3/60 Hz (27.5-27.2/13.6 amps) with vacuum blower, and 8" deep internal dust tray. 510 cfm. 77 dBA.
<input type="checkbox"/> V410-10-2	Portable, high vacuum, cartridge collector, with (2) CLEAN-2® cartridge filters (150 sq.ft. of media each), manual VIBRA-PULSE® filter cleaning systems, and a 10 Hp TEFC motor, 575/3/60 Hz (27.5-27.2/13.6 amps) with vacuum blower, and 8" deep internal dust tray. 510 cfm. 77 dBA.

Fan / Motor Upgrades or Options (when ordering main unit)
 [V-410-V280](#) 5 Hp vacuum motor, 208-230/460/575/3/60Hz (12/6 amps) in place of 10 Hp vacuum motor, 280 cfm.

Misc. Options (when ordering main unit)
 [V-410-AP-3](#) Off Line Auto Clean, 3 Phase Option for Standard V410 Unit
 [V-410-HOPPER-5](#) 5 Gallon Hopper Option for Standard V410 Unit
 [V-410-HOPPER-55](#) Hopper and stand for 55 gallon drum. (LESS DRUM) includes 55 gallon lid.
 [V-410-HOSE](#) 1.75" Flame Retardant Flex Hose-25' Option for Standard V410 Unit

Filter Options (when ordering main unit)
 [V-410-CYCLONE LID](#) 55 Gallon Drum Lid Option for Standard V410 Unit
 [V-410-EXAD](#) External AD Module Option for Standard V410 Unit
 [V-410-EXHE](#) External 99.97% HEPA Filter Option for Standard V410 Unit

"Hi-Vac" Hoses, Crush-resistant
 [HVH-CR-1.25](#) 1.25" diameter "HI VAC" Flexible hose - **price per foot**
 [HVH-CR-1.5](#) 1.5" diameter "HI VAC" Flexible hose - **price per foot**
 [HVH-CR-2.0](#) 2.0" diameter "HI VAC" Flexible hose - **price per foot**
 [HVH-CR-2.5](#) 2.5" diameter "HI VAC" Flexible hose - **price per foot**
 [HVH-CR-3.0](#) 3.0" diameter "HI VAC" Flexible hose - **price per foot**

"Hi-Vac" Hoses, Wire Reinforced
 [HVH-WR-0.75](#) 0.75" diameter "HI-VAC" hose - **price per foot**
 [HVH-WR-1.0](#) 1.0" diameter "HI-VAC" hose - **price per foot**
 [HVH-WR-1.25](#) 1.25" diameter "HI-VAC" hose - **price per foot**
 [HVH-WR-1.5](#) 1.5" diameter "HI-VAC" hose - **price per foot**
 [HVH-WR-1.75](#) 1.75" diameter "HI-VAC" hose - **price per foot**
 [HVH-WR-2.0](#) 2.0" diameter "HI-VAC" hose - **price per foot**
 [HVH-WR-2.25](#) 2.25" diameter "HI-VAC" hose - **price per foot**
 [HVH-WR-2.5](#) 2.5" diameter "HI-VAC" hose - **price per foot**
 [HVH-WR-3.0](#) 3.0" diameter "HI-VAC" hose - **price per foot**
 [HVH-WR-4.0](#) 4.0" diameter "HI-VAC" hose - **price per foot**

Hose Connectors and Fittings
 [7HD91011](#) 2" x 1.5" reducer. To connect 2" hose to the 7TLO-9002 (2 piece wand).
 [7TLO9002](#) 2 Piece Wand, 54" Long, 1.5 diameter
 [HOSE-C-1.25"x1.5"](#) Hose Connector, Steel. Connects 1 1/4" to 1 1/2" vacuum hose.
 [HOSE-C-1.75](#) Hose Connector Steel. Connects 1 3/4" hose to 2" vacuum hose

Source Capture Nozzles, Suction Casings & Hoods
 [2AH17003](#) Magnetic Nozzle, short. Nozzle comes complete with: 2" diameter hose connection 10 X 1.25" rectangular opening for capture of fumes and dust
 [2AH17004](#) Magnetic Nozzle, long. Nozzle comes complete with: 2" diameter hose connection, 19" Long flexible steel duct 10" x 1.25" rectangular opening for capture of fumes and dust
 [2AH17008](#) Nozzle, Soldering Iron.
 [OG-MG-001](#) ON-GUN suction nozzle for most 250-400 amp. MIG welding guns, as follows: 50-80 CFM required per gun (depending on the application and welding gun amperage) Nozzle supplied with a 1" hose connection 10' hose c/w hose cuff (Hose and hose clamps must be ordered separately)
 [OG-MG-005](#) ON-GUN suction nozzle for most "Push/Pull" MIG welding guns, as follows: 60-100 CFM required per gun (depending on the application and welding gun amperage) Nozzle supplied with a 1" hose connection (Hose and hose clamps must be ordered separately)
 [OG-MG-006](#) ON-GUN suction nozzle for most "Large Automatics" MIG welding guns, as follows: 400+ amp. 70-120 CFM required per gun (depending on the application and welding gun amperage) Nozzle supplied with a 1" hose connection (Hose and hose clamps must be ordered separately)

Hose Clamps
 [HCS-1.25](#) Hose Clamps 1.25" (32mm) Ø
 [HCS-2](#) Hose Clamps 2-3" (50-75mm) Ø
 [HCS-3](#) Hose Clamps 3" (75mm) Ø
 [HCS-4](#) Hose Clamps 4" (100mm) Ø
 [HCS-5](#) Hose Clamps 5" (125mm) Ø

Replacement filters - (Quantity discounts available upon request)
 [2AF9-0006](#) Adsorber v-bank module. 2 are need for Pac 91
 [7FH9-9312](#) HEPA, 99.97% filter, wood frame, external.
 [7FR0-2016](#) Flame Retardant Cartridge Filter made of 80/20% Cell/Poly Blend. Replacement filter for POWERBOOTH, DUST CONTROL BOOTH, PC-1, PC-2, DC-1, DC-2, V410, DT800, DT3000
 [7FR0-2016-OEM](#) Clean 2 Cartridge Filter for POWERBOOTH, DUST CONTROL BOOTH, PC-1, PC-2, DC-1, DC-2, V410, DT800, DT3000
 [7FR0-2017](#) FiberDust Cartridge Filter used in the following equipment: POWERBOOTH, DUST CONTROL BOOTH, PC-1, PC-2, DC-1, DC-2, V410, DT800, DT3000
 [7FR02028](#) Cartridge Filter - Teflon with steel caps.
 [7FR0-5020](#) UCP Cartridge Filter ALH-1/2/6, DCH, PCH, DTH, Mobi-Pulse, DC-4/6/8/12/18, TC-4 HC-4 & DT-3000V2.
 [CF-2201612402](#) 16" OD x 9.625" ID x 11.5" OAL open/closed 65ft² black HO Polyester media (Teflon treated). Comes complete with aluminized end caps.

Preventative Maintenance Pressure Gauges, etc. (when ordering main unit)
 [V-410-REG](#) Regulator Gauge Option for Standard V410 Unit

Sound Attenuation
 [V-410-S](#) Muffler Option for Standard V410 Unit

CUSTOMER:	
CUSTOMER P.O.:	
PROJECT:	
ENGINEER:	
SALES REP.:	
IDENTIFICATION / TAGGING:	



The device depicted and described hereon embodies proprietary information owned by the manufacturer. All design, manufacturing, reproduction, sales and patent rights regarding this device or drawing reserved except where explicit right is guaranteed in writing. We reserve the right to make design changes.

Drawn by: Janos B	(12-04) V410 Portable (on wheels) or Static (with legs, hooper and 5 ga. drum)
Date: 1/12/2010	
Scale: NTS	Specification Drawing
Weight: N/A	
	Drawing No.: -
	File Name: (12-04) V410 - SD
	Material: -
	Sheet: 3/3