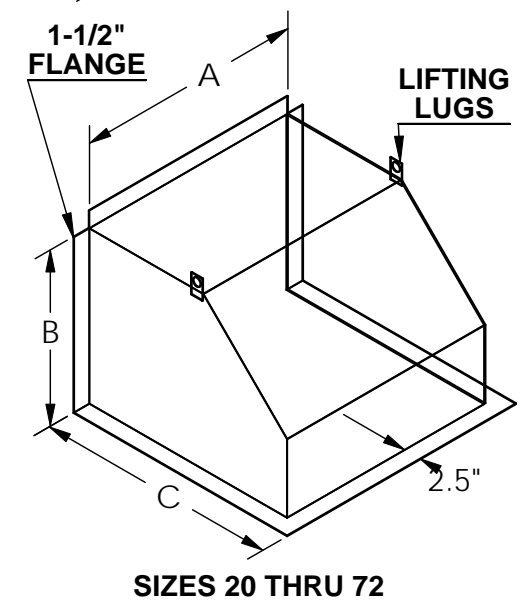
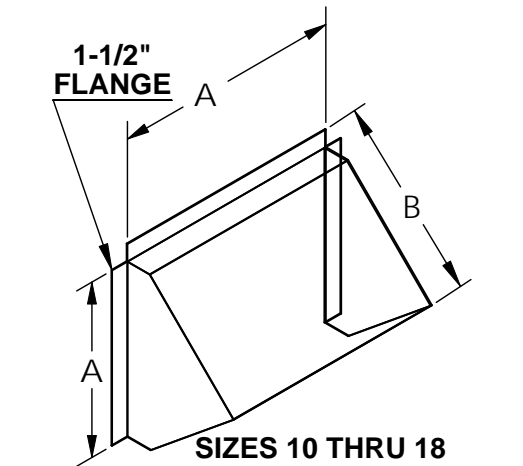
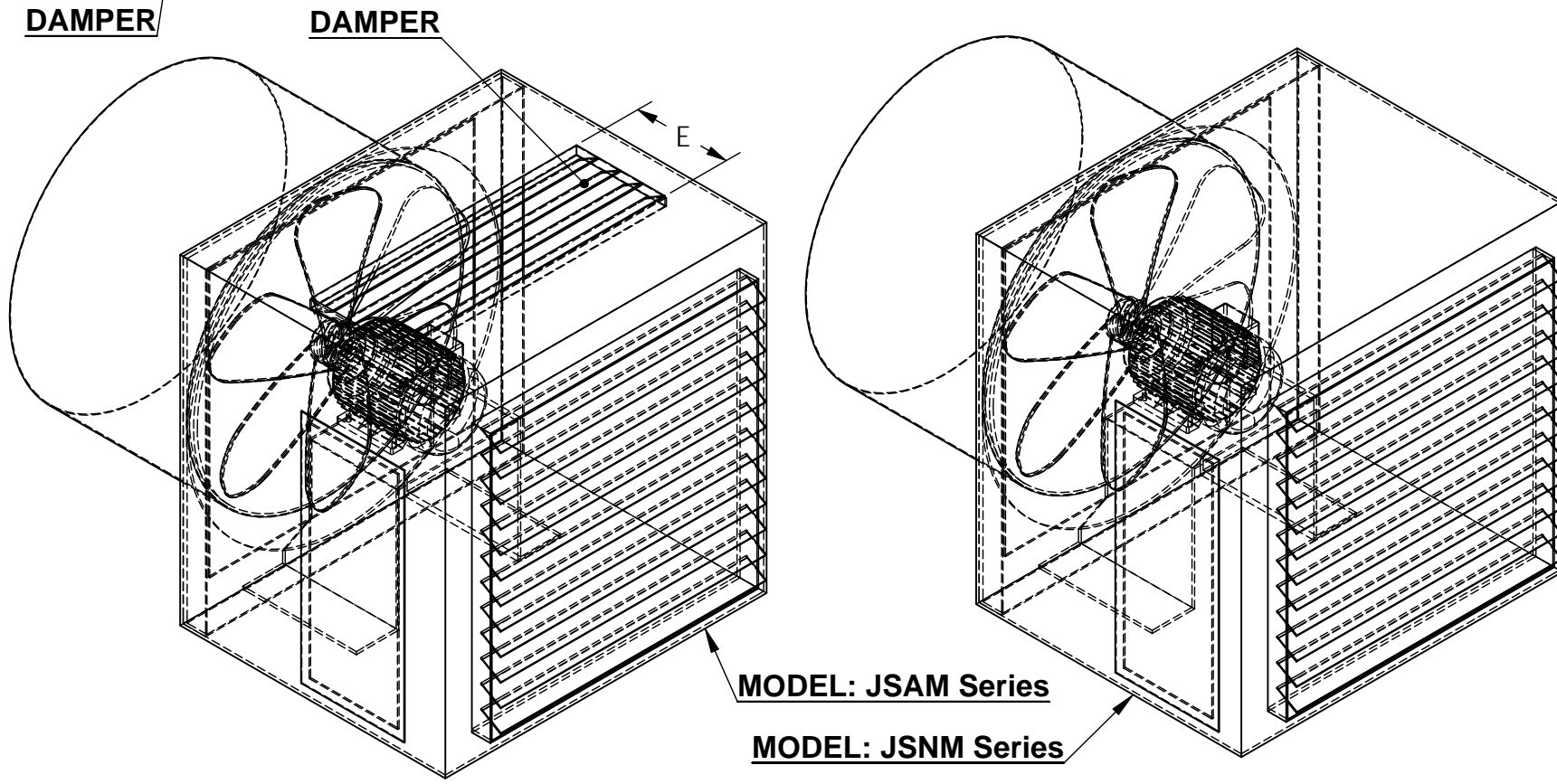


MODEL NO	DIMENSIONS [Inches]							WEIGHT [LBS]
	A	B	C	D	E	F	G	
20 JSAM	20	24	24	20	10	30	21-1/8	220
24 JSAM	24	30	30	24	12	30	25-1/8	300
30 JSAM	30	36	36	30	16	36	31-1/8	380
36 JSAM	36	42	42	36	18	40	37-1/8	500
42 JSAM	42	48	48	42	19	40	43-1/8	600
48 JSAM	48	54	54	48	23	48	49-1/8	850
54 JSAM	54	60	60	54	27	60	55-1/8	1135
60 JSAM	60	66	66	60	32	60	61-1/8	1540
72 JSAM	72	80	80	72	38	72	73-1/8	1820

MODEL NO.	DIMENSIONS [Inches]				
	A	B	C	D	E
20 JSNM	20.5	24	24	20	24
24 JSNM	25.5	30	30	24	30
30 JSNM	31.5	36	36	30	36
36 JSNM	37.5	42	42	36	42
42 JSNM	43.5	48	48	42	48
48 JSNM	49.5	54	54	48	48
54 JSNM	55.5	60	57	54	60
60 JSNM	61.5	66	65	60	60
72 JSNM	73.5	80	70	72	72

**NOTE:**  
DIMENSIONS ARE SUBJECT TO  
MANUFACTURING TOLERANCES  
AND CAN CHANGE WITHOUT NOTICE



MODEL SIZE	DIMENSIONS [Inches]				WEIGHT [LBS]
	A	B	C	GAUGE DEG.	
S10/12	14	16-1/4	-	18 45	15
S14/16	16	20-1/4	-	18 45	20
S18	22	21-1/2	-	18 45	25
S20	22	22	27-3/4	18 90	25
S24	27-1/4	26-1/2	38-1/2	18 90	30
S30	32-1/2	33-1/4	44-1/2	18 90	40
S36	38-1/2	39-1/4	49	18 90	50
S42	44-1/2	45-1/4	58-1/2	18 90	60
S48	50-1/2	51-1/2	62-1/2	18 90	70
S54	56-3/4	57	73	18 90	120
S60	62-3/4	63	73	18 90	175
S72	73-1/8	72	73	18 90	200

**13-07**

CUSTOMER:  
CUSTOMER P.O.:  
PROJECT:  
ENGINEER:  
SALES REP.:  
IDENTIFICATION / TAGGING:

[www.lev-co.com](http://www.lev-co.com) • 1.888.862.5356



The device depicted and described hereon embodies proprietary information owned by the manufacturer. All design, manufacturing, reproduction, sales and patent rights regarding this device or drawing reserved except where explicit right is guaranteed in writing. We reserve the right to make design changes.

Drawn by: JANOS B  
Date: 5/2/2008  
Scale: NTS  
Weight: N/A

**13-07 Non-Tempered Air Makeup Systems**  
Specification Drawing

Drawing No.: -  
Material: -  
File Name: (13-05) Non-Tempered Air Makeup  
Sheet: 1/2

**MODELS & OPTIONS:**

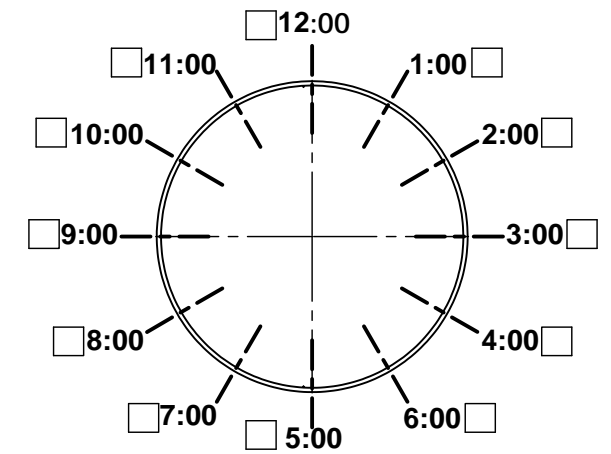
Part #	Description
<b>Non-Modulating MUA Units (Not-Fired)</b>	
<input type="checkbox"/> MJET-24-JSNM	5,000 CFM @ 1.3" SP Unfired, Non-Modulating MUA unit, 3 HP TEFC Motor. Unit comes c/w motorized dampers and flow straightener
<input type="checkbox"/> MJET-30-JSNM	Air Make-up System - Non-Modulation
<input type="checkbox"/> MJET-36-JSNM	Air Make-up System - Non-Modulation
<input type="checkbox"/> MJET-42-JSNM	Air Make-up System - Non-Modulation
<input type="checkbox"/> MJET-48-JSNM	Air Make-up System - Non-Modulation
<input type="checkbox"/> MJET-54-JSNM	Air Make-up System - Non-Modulation
<input type="checkbox"/> MJET-60-JSNM	Air Make-up System - Non-Modulation

<b>Modulating MUA Units (Non-Fired)</b>	
<input type="checkbox"/> MJET-24-JSAM	5000 CFM @ 1.3" SP Unfired MUA unit w/ Recirculation 3 HP TEFC Motor. Unit comes c/w motorized dampers, temperature control, insulated cabinet and flow straightener
<input type="checkbox"/> MJET-30-JSAM	10,000 CFM @ 1.3" SP Unfired MUA unit w/ Recirculation 5 HP TEFC Motor. Unit comes c/w motorized dampers, temperature control, insulated cabinet and flow straightener
<input type="checkbox"/> MJET-36-JSAM	15,000 CFM @ 1.3" SP Unfired MUA unit w/ Recirculation 7.5 HP TEFC Motor. Unit comes c/w motorized dampers, temperature control, insulated cabinet and flow straightener
<input type="checkbox"/> MJET-42-JSAM	20,000 CFM @ 1.3" SP Unfired MUA unit w/ Recirculation 7.5 HP TEFC Motor. Unit comes c/w motorized dampers, temperature control, insulated cabinet and flow straightener
<input type="checkbox"/> MJET-48-JSAM	25,000 CFM @ 1.3" SP Unfired MUA unit w/ Recirculation 10 HP TEFC Motor. Unit comes c/w motorized dampers, temperature control, insulated cabinet and flow straightener
<input type="checkbox"/> MJET-54-JSAM-1	30,000 CFM @ 1.3" SP Unfired MUA unit w/ Recirculation 3 HP TEFC Motor. Unit comes c/w motorized dampers, temperature control, insulated cabinet and flow straightener
<input type="checkbox"/> MJET-60-JSAM-1	40,000 CFM @ 1.3" SP Unfired MUA unit w/ Recirculation 20 HP TEFC Motor. Unit comes c/w motorized dampers, temperature control, insulated cabinet and flow straightener
<input type="checkbox"/> MJET-54-JSAM-2	37,000 CFM @ 1.3" SP Unfired MUA unit w/ Recirculation 20 HP TEFC Motor. Unit comes c/w motorized dampers, temperature control, insulated cabinet and flow straightener
<input type="checkbox"/> MJET-60-JSAM-2	50,000 CFM @ 1.3" SP Unfired MUA unit w/ Recirculation 25 HP TEFC Motor. Unit comes c/w motorized dampers, temperature control, insulated cabinet and flow straightener

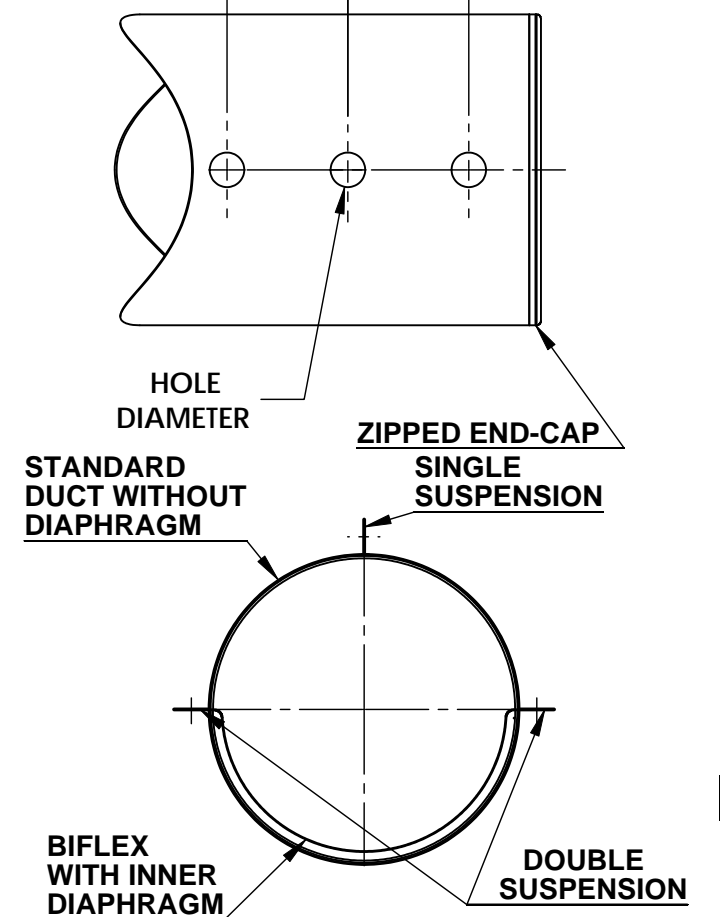
<b>Misc. Options</b>	
<input type="checkbox"/> 1000-D-AD	AD Module Option for Standard 1000-D Unit (order charcoal separately)
<input type="checkbox"/> FD-44-HA	Hardware Accessories for 44" dia. fabric ducting. Price per foot.
<input type="checkbox"/> FD-44-CABLE	Cable for 44" dia. fabric duct. Price per foot.
<input type="checkbox"/> FD-44-CABLE-KIT	Cable kit. At least 2 kits/section needed.
<input type="checkbox"/> FD-44-90 ELBOW	44" dia. 90 degree elbow (1.5xR), 20 ga. galvanized sheet metal.
<input type="checkbox"/> FD-44-45 ELBOW	44" dia. 45 degree elbow (1.5xR), 20 ga. galvanized sheet metal.
<input type="checkbox"/> FD-44-SR-TRANS	Transition from 44"x44" square to 44" dia; 20 ga. galvanized steel

<b>Fabric Ducting</b>	
<input type="checkbox"/> MJET-24-FDCT	Fabric Duct with custom hole pattern
<input type="checkbox"/> MJET-30-FDCT	Fabric Duct with custom hole pattern
<input type="checkbox"/> MJET-36-FDCT	Fabric Duct with custom hole pattern
<input type="checkbox"/> MJET-42-FDCT	Fabric Duct with custom hole pattern
<input type="checkbox"/> MJET-48-FDCT	Fabric Duct with custom hole pattern
<input type="checkbox"/> MJET-54-FDCT	Fabric Duct with custom hole pattern
<input type="checkbox"/> MJET-60-FDCT	Fabric Duct with custom hole pattern

<b>MUA Units Wall Hoods</b>	
<input type="checkbox"/> MJET-24-WHOOD	Wall mounted weather hood
<input type="checkbox"/> MJET-30-WHOOD	Wall mounted weather hood
<input type="checkbox"/> MJET-36-WHOOD	Wall mounted weather hood
<input type="checkbox"/> MJET-42-WHOOD	Wall mounted weather hood
<input type="checkbox"/> MJET-48-WHOOD	Wall mounted weather hood
<input type="checkbox"/> MJET-54-WHOOD	Wall mounted weather hood
<input type="checkbox"/> MJET-60-WHOOD	Wall mounted weather hood



SPACING ← → SPACING



**13-07**

CUSTOMER:  
 CUSTOMER P.O.:  
 PROJECT:  
 ENGINEER:  
 SALES REP.:  
 IDENTIFICATION / TAGGING:

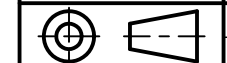
> [www.lev-co.com](http://www.lev-co.com) • 1.888.862.5356

**lev-co**

The device depicted and described hereon embodies proprietary information owned by the manufacturer. All design, manufacturing, reproduction, sales and patent rights regarding this device or drawing reserved except where explicit right is guaranteed in writing. We reserve the right to make design changes.

Drawn by: JANOS B  
 Date: 5/2/2008  
 Scale: NTS  
 Weight: N/A

**13-07 Non-Tempered  
 Air Makeup Systems  
 Specification Drawing**



Drawing No.: -  
 Material: -  
 File Name: (13-05) Non-Tempered Air Makeup  
 Sheet: 2/2