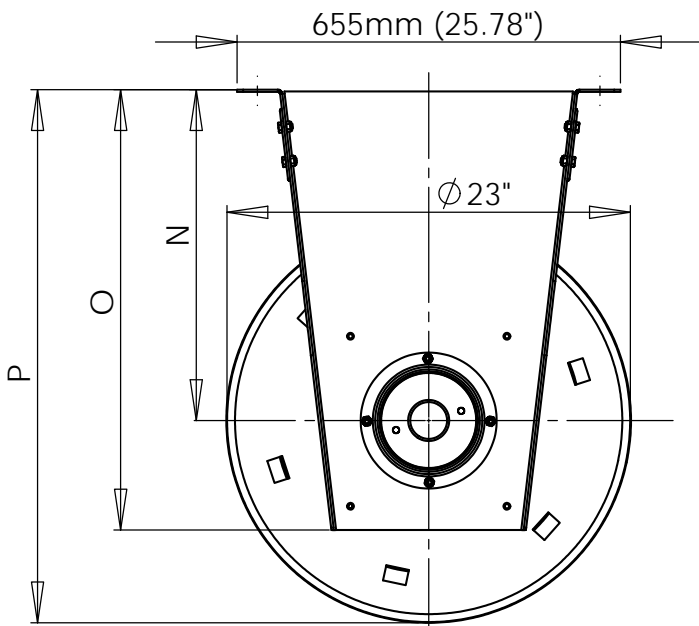
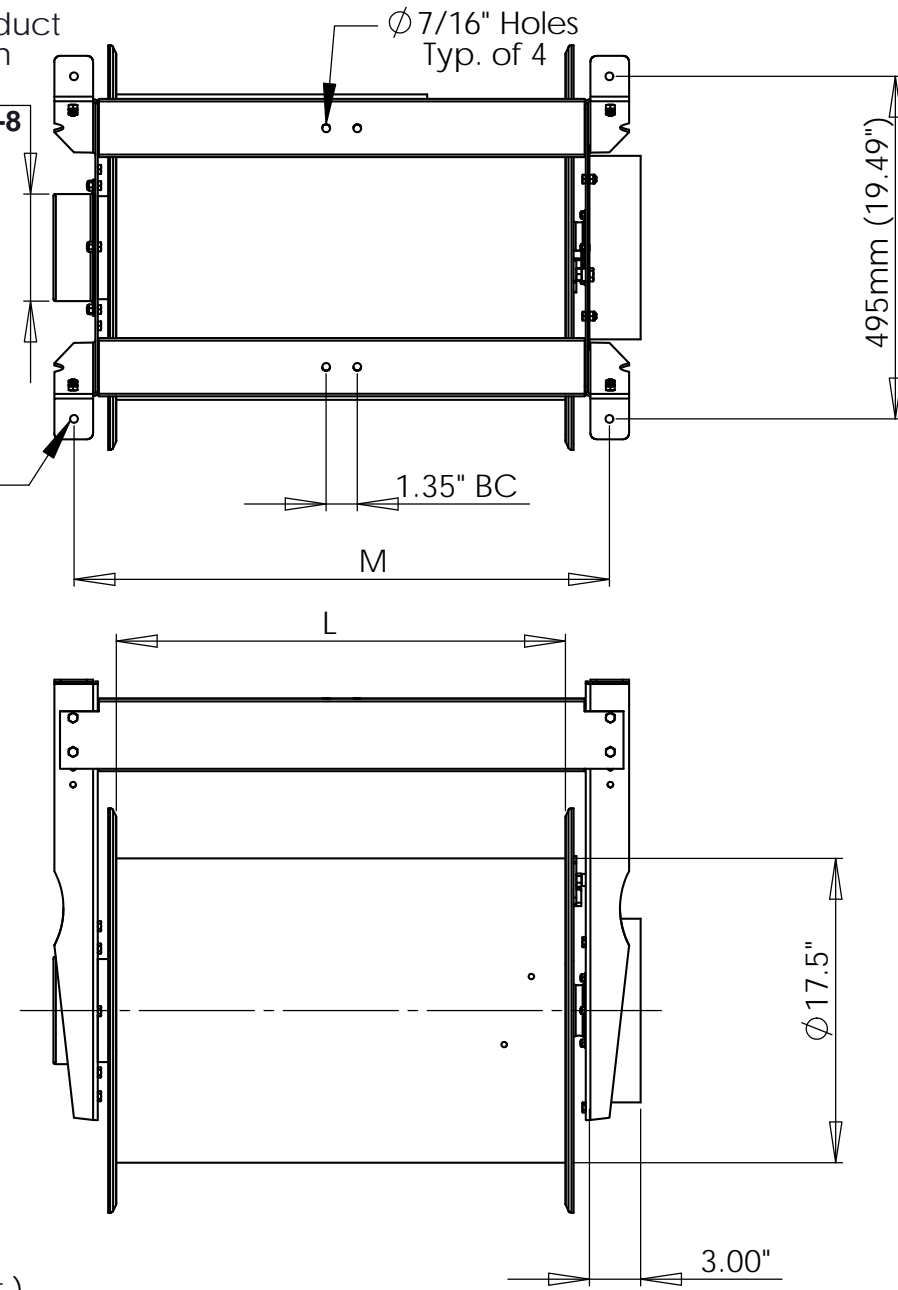


	L	M	N	O	P
HRM-4	680mm(26.77")	775mm(30.51")	483mm (19")	635mm(25")	645mm(25.4")
HRM-5	980mm (38.58")	1075mm(42.32")	483mm (19")	635mm(25")	645mm(25.4")
HRM-6	980mm (38.58")	1075mm(42.32")	483mm (19")	635mm(25")	645mm(25.4")
HRM-8	1260mm (49.60")	1355mm(53.34")	493mm(19.4")	698.5mm (27.5")	780mm(30.7")
HRM-10	1260mm (49.60")	1355mm(53.34")	493mm(19.4")	698.5mm (27.5")	780mm(30.7")

Fan/hose/duct connection  
 $\phi 6.3"$   
**Note: Inlet is 8"Ø on HRM-8**

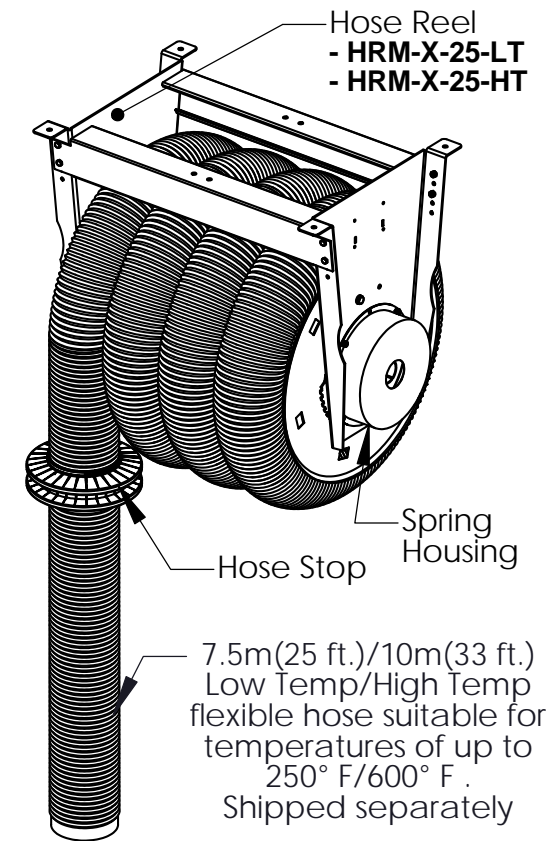
Typ. of 4  
 $\phi 7/16"$  Holes



- Length of hose on drum:
- HRM-4-25-LT: 7.5m (25 ft.)
  - HRM-4-33-LT: 10 m (33 ft.)
  - HRM-5-25-LT: 7.5m (25 ft.)
  - HRM-5-33-LT: 9.0m (33 ft.)
  - HRM-6-25-LT: 7.5m (25 ft.)
  - HRM-6-33-LT: 8.5m (28 ft.)
  - HRM-8-25-LT: 6.7m (22 ft.)
  - HRM-8-33-LT: 9.0m (33 ft.)
  - HRM-8-41-LT: 12.5m (41 ft.)

- Length of hose on drum:
- HRM-4-25-HT: 7.5m (25 ft.)
  - HRM-4-33-HT: 10 m (33 ft.)
  - HRM-5-25-HT: 7.5m (25 ft.)
  - HRM-5-33-HT: 9.0m (33 ft.)
  - HRM-6-25-HT: 7.5m (25 ft.)
  - HRM-6-33-HT: 8.5m (28 ft.)
  - HRM-6-41-HT: 12.5m (41 ft.)
  - HRM-8-25-HT: 6.7m (22 ft.)
  - HRM-8-33-HT: 9.0m (33 ft.)
  - HRM-8-41-HT: 12.5m (41 ft.)

**Airflow :**  
 For exhaust extraction systems in vehicle repair shops where engines are running without load and with low rpm's, the following air flows can be used as guidelines:  
**CARS = 250 CFM, TRUCKS = 600 CFM**  
**HEAVY EQUIPMENT = 1000 CFM**



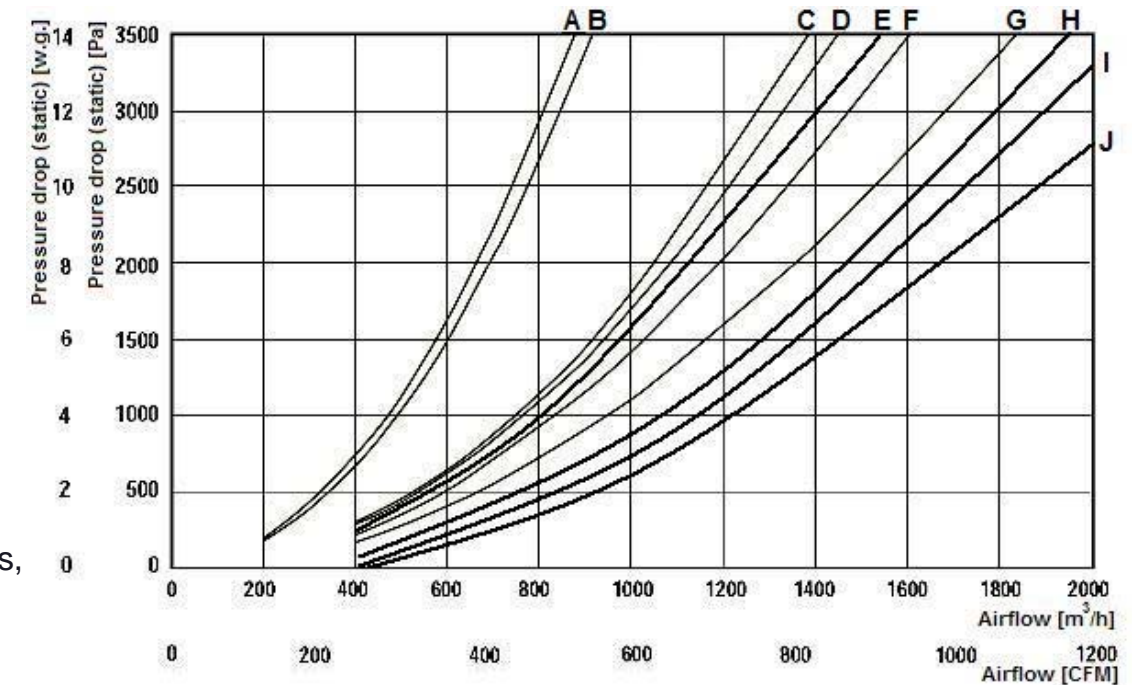
**Air flow :**  
 HRM-4-xx-LT/HT: 250 CFM  
 HRM-5-xx-LT/HT: 400 CFM  
 HRM-6-xx-LT/HT: 600 CFM  
 HRM-8-xx-LT/HT: 1000 CFM

Pressure drop over reel: 4" /5" w.g.

Pressure drop diagram (pressure drop over reel when most of the hose is uncoiled):

HRM - XX - LT/HT:

- A - Ø100mm(4"), L=10m(33')
- B - Ø100mm(4"), L=7.5m(25')
- C - Ø125mm(5"), L=10m(33')
- D - Ø125mm(5"), L=7.5m(25')
- E - Ø150mm(6"), L=12.5m(41')
- F - Ø150mm(6"), L=10m(33')
- G - Ø150mm(6"), L=7.5m(25')
- H - Ø200mm(8"), L=12.5m(41')
- I - Ø200mm(8"), L=10m(33')
- J - Ø200mm(8"), L=7.5m(25')



14-04

CUSTOMER:  
 CUSTOMER P.O.:  
 PROJECT:  
 ENGINEER:  
 SALES REP.:  
 IDENTIFICATION / TAGGING:

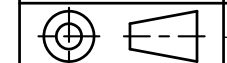
> [www.lev-co.com](http://www.lev-co.com) • 1.888.862.5356

**lev-co**

The device depicted and described hereon embodies proprietary information owned by the manufacturer. All design, manufacturing, reproduction, sales and patent rights regarding this device or drawing reserved except where explicit right is guaranteed in writing. We reserve the right to make design changes.

Drawn by: Janos B  
 Date: 9/20/2011  
 Scale: NTS  
 Weight: N/A

**14-04 Low Temp & High Temp Spring Recoil Hose Reels**  
**Specification Drawing**



Drawing No.: -  
 Material: -  
 File Name: (14-04) Spring Recoil Hose Reel - S  
 Sheet: 1/5

## Chart for Maximum Hose Lengths (ft)

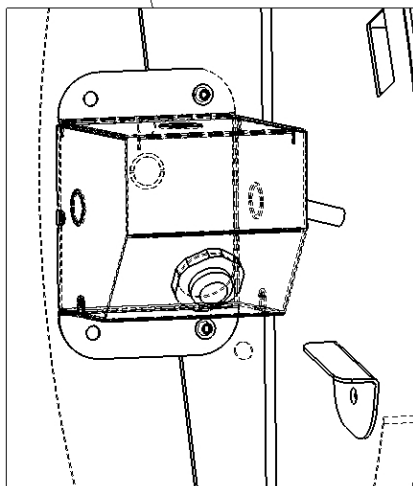
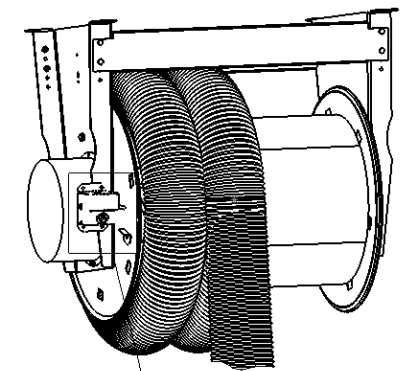
	Spring Recoil Hose Reel 650 mm (26") Drum Width	Spring Recoil Hose Reel 1000 mm (37") Drum Width	Spring Recoil Hose Reel 1250 mm (50") Drum Width
	Approved maximum length of hose on this hose reel	Approved maximum length of hose on this hose reel	Approved maximum length of hose on this hose reel
Part Number Pre-fix			
HRM-4-NH-(maximum hose length)	35.0	55.0	75
HRM-5-NH-(maximum hose length)	30.0	45.0	62
HRM-6-NH-(maximum hose length)	25.0	38.0	50
HRM-8-NH-(maximum hose length)	17.5	27.0	41
HRM-10-NH-(maximum hose length)	15.0	24.0	33

## Weight of Hose Reel Package per lbs

Model	Weight (HT or LT)
HRM-4-25-XX	181
HRM-4-33-XX	186
HRM-5-25-XX	185
HRM-5-33-XX	213
HRM-6-25-XX	189
HRM-6-33-XX	218
HRM-8-25-XX	218
HRM-8-33-XX	239
HRM-8-41-XX	249

LT = Low Temperature hose (250 °F)  
HT = High Temperature hose (600 °F)

### MICROSWITCH OPTION



### MODELS & OPTIONS:

#### Low Temp Hose Reel

- [HRM-4-25-LT](#)
- [HRM-4-33-LT](#)
- [HRM-5-25-LT](#)
- [HRM-5-33-LT](#)
- [HRM-6-25-LT](#)
- [HRM-6-33-LT](#)
- [HRM-8-25-LT](#)
- [HRM-8-33-LT](#)

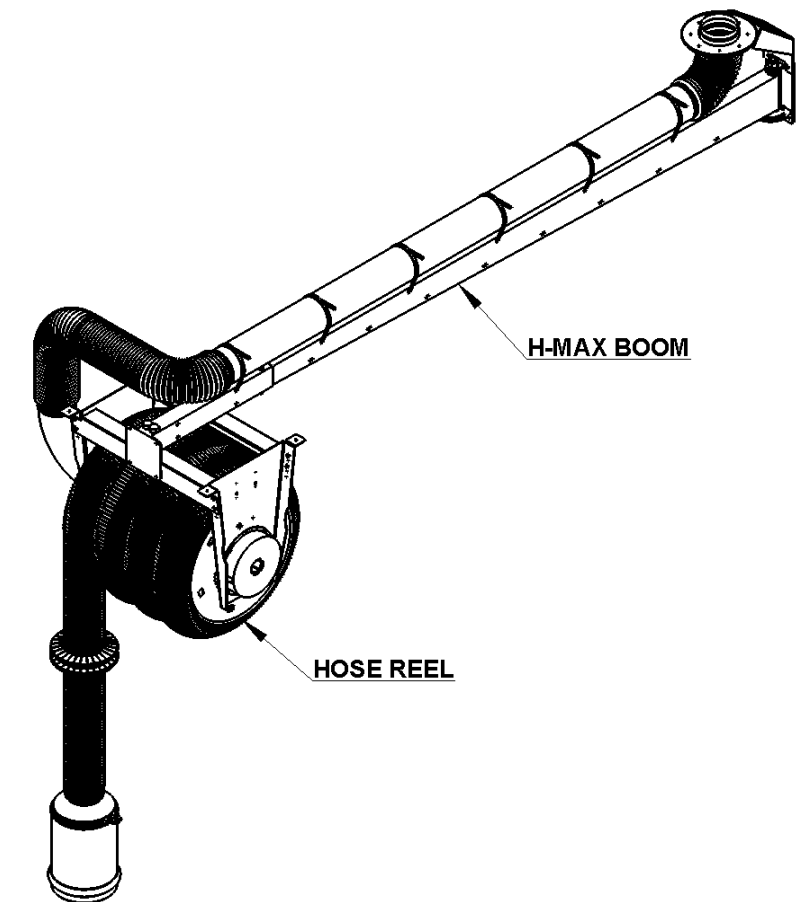
#### High Temp Hose Reel

- [HRM-4-25-HT](#)
- [HRM-4-33-HT](#)
- [HRM-5-25-HT](#)
- [HRM-5-33-HT](#)
- [HRM-6-25-HT](#)
- [HRM-6-33-HT](#)
- [HRM-8-25-HT](#)
- [HRM-8-33-HT](#)

4" Spring Recoil Hose Reel c/w 7.5m (25') of 250 deg. F hose.  
4" Spring Recoil Hose Reel c/w 10m (33') of 250 deg. F hose.  
5" Spring Recoil Hose Reel c/w 7.5m (25') of 250 deg. F hose.  
5" Spring Recoil Hose Reel c/w 10m (33') of 250 deg. F hose.  
6" Spring Recoil Hose Reel c/w 7.5m (25') of 250 deg. F hose.  
6" Spring Recoil Hose Reel c/w 10m (33') of 250 deg. F hose.  
8" Spring Recoil Hose Reel c/w 7.5m (25') of 250 deg. F hose.  
8" Spring Recoil Hose Reel c/w 10m (33') of 250 deg. F hose.

4" Spring Recoil Hose Reel c/w 7.5m (25') of 600 deg. F hose.  
4" Spring Recoil Hose Reel c/w 10m (33') of 600 deg. F hose.  
5" Spring Recoil Hose Reel c/w 7.5m (25') of 600 deg. F hose.  
5" Spring Recoil Hose Reel c/w 10m (33') of 600 deg. F hose.  
6" Spring Recoil Hose Reel c/w 7.5m (25') of 600 deg. F hose.  
6" Spring Recoil Hose Reel c/w 10m (33') of 600 deg. F hose.  
8" Spring Recoil Hose Reel c/w 7.5m (25') of 600 deg. F hose.  
8" Spring Recoil Hose Reel c/w 10m (33') of 600 deg. F hose.

### EXTENSION BOOM OPTION



14-04

CUSTOMER:  
CUSTOMER P.O.:  
PROJECT:  
ENGINEER:  
SALES REP.:  
IDENTIFICATION / TAGGING:

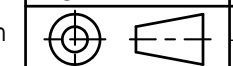
> [www.lev-co.com](http://www.lev-co.com) • 1.888.862.5356

**lev-co**

The device depicted and described hereon embodies proprietary information owned by the manufacturer. All design, manufacturing, reproduction, sales and patent rights regarding this device or drawing reserved except where explicit right is guaranteed in writing. We reserve the right to make design changes.

Drawn by: Janos B  
Date: 9/20/2011  
Scale: NTS  
Weight: N/A

**14-04 Low Temp & High Temp Spring Recoil Hose Reels**  
Specification Drawing



Drawing No.: -  
Material: -  
File Name: (14-04) Spring Recoil Hose Reel - S  
Sheet: 2/5

**MODELS & OPTIONS:**

**Hose Reels without hose**

- [HR-M-4](#)
- [HR-M-5](#)
- [HR-M-6](#)
- [HR-M-8](#)

Hose Reel for use with up to 33' (10m) of 4" (100mm) Ø hose. C/W hose stop and 4" inlet connection. Order hose separately.

Hose Reel for use with up to 30' (9m) of 5" (125mm) Ø hose. C/W hose stop and 5" inlet connection. Order hose separately.

Hose Reel for use with up to 25' (7.5m) of 6" (150mm) Ø hose. C/W hose stop and 6" inlet connection. Order hose separately.

Hose Reel w/ 8" (200mm) Ø exhaust hose reel for use w/up to 20' (6m) of 8" (200mm) Ø hose. C/W hose stop and 8" inlet connection. Order hose separately.

**Direct Mount Fans - 0.5 HP - (Motor Starter not included)**

- [P-149-1](#)
- [P-149-2](#)
- [P-152-2](#)
- [P-152-3](#)
- [P-153-1](#)
- [P-153-2](#)
- [P-153-3](#)
- [P-154-1](#)
- [P-154-2](#)

P-Max© direct drive fan 1 HP **115V/1/60**

P-Max© direct drive fan 1 HP **208-230V/460V/3/60**

P-Max© direct drive fan 2.0 HP **208-230V/460V/3/60**

P-Max© direct drive fan 2.0 HP **575-600V/3/60**

2.0 HP direct drive fan **115-230/1/60** with BI aluminum wheel with self cleaning blades, AMCA type B spark resistance construction (rated for 1200CFM@5" w.g.)

2 HP direct drive fan **208-230/460/3/60** with BI aluminum wheel with self cleaning blades, AMCA type B spark resistance construction (rated for 1200CFM@5" w.g.)

2 HP direct drive fan **575/3/60** with BI aluminum wheel with self cleaning blades, AMCA type B spark resistance construction (rated for 1200CFM@5" w.g.)

3 HP direct drive fan **208-230/460/3/60** with BI aluminum wheel with self cleaning blades, AMCA type B spark resistance construction (rated for 1800CFM@5.5" w.g.)

3 HP direct drive fan **575/3/60** with BI aluminum wheel with self cleaning blades, AMCA type B spark resistance construction (rated for 1800CFM@5.5" w.g.)

**Direct Mount Fans - 0.75 HP - (Motor Starter not included)**

- [P-152-1](#)

P-Max© direct drive fan 1.5 HP **115V/230V/1/60**

**Fan / Motor Upgrades or Options (when ordering main unit)**

- [P-147-1](#)
- [P-147-2](#)
- [P-147-3](#)
- [P-147-4](#)
- [P-148-1](#)
- [P-148-2](#)
- [P-148-3](#)
- [P-148-4](#)
- [P-149-3](#)
- [P-149-4](#)

P-Max direct drive fan 0.5 HP **115V/1/60**.

P-Max direct drive fan 0.5 HP **208-230V/1/60**

P-Max direct drive fan 0.5 HP **230-460V/3/60**.

P-Max direct drive fan 0.5 HP **575V/3/60**.

P-Max© direct drive fan 1 HP **115V/1/60**.

P-Max© direct drive fan 1 HP **208-230V/1/60**.

P-Max© direct drive fan 1 HP **230-460V/3/60**.

P-Max© direct drive fan 1 HP **575V/3/60**.

P-Max© direct drive fan 1 HP **575-600V/3/60**

P-Max© direct drive fan 1 HP **230/1/60**

**Horizontal boom extensions (Optional)**

- [H-MAX-HR-1](#)
- [H-MAX-HR-2](#)
- [H-MAX-HR-3](#)

2m (6.5') H-MAX Boom Kit for Hose Reel  
please specify duct when ordering

3m (10') H-MAX Boom Kit for Hose Reel

4m (13') H-MAX Boom Kit for Hose Reel

CUSTOMER:  
 CUSTOMER P.O.:  
 PROJECT:  
 ENGINEER:  
 SALES REP.:  
 IDENTIFICATION / TAGGING:



The device depicted and described hereon embodies proprietary information owned by the manufacturer. All design, manufacturing, reproduction, sales and patent rights regarding this device or drawing reserved except where explicit right is guaranteed in writing. We reserve the right to make design changes.

Drawn by: Janos B  
 Date: 9/20/2011  
 Scale: NTS  
 Weight: N/A

**14-04 Low Temp & High Temp Spring Recoil Hose Reels**  
**Specification Drawing**

Drawing No.: -  
 File Name: (14-04) Spring Recoil Hose Reel - S  
 Material: -  
 Sheet: 3/5

**MODELS & OPTIONS:**

**Under Carriage Rubber Tailpipe Adapters c/w Vice Grip (Suitable for Round or Oval Tailpipes)**

- [SRF-4](#) 4" Rubber nozzle with vice grip - 6" opening
- [SRF-4/D](#) 4" Rubber nozzle with vice grip and automatic damper - 6" opening
- [SRF-5](#) 5" Rubber nozzle with vice grip - 8" opening
- [SRF-5/D](#) 5" Rubber nozzle with vice grip and automatic damper - 8" opening
- [SRF-6](#) 6" Rubber nozzle with vice grip - 8" opening
- [SRF-6/D](#) 6" Rubber nozzle with vice grip and automatic damper - 8" opening

**Over-head Stack adapter - High Temperature Rubber**

- [RCA-5](#) 5" Diesel Stack Adapter - 10" opening for exhaust pipe
- [RCA-6](#) 6" Diesel Stack Adapter - 10" opening for exhaust pipe
- [RCA-8](#) 8" Diesel Stack Adapter - 10" opening for exhaust pipe

**Hose, Hood & Nozzle Options**

- [HRM-6-HS](#) Hose stop for 6" dia. hose reels
- [TP-6-12](#) 6' - 12' Telescoping Pole

**Electric Hose Reel Accessories**

- [HR-EAD](#) Electrical Activated damper for 4", 5", 6", 8" dia hose reels c/w 115V/1/60 actuator and ON/OFF switch. The damper is open/close from an ON/OFF switch installed on the wall. Field wiring required.

**Automatic Motor Starter**

- [P-025-24S-120V-1PH-2.0 HP](#) Energy Saver E- Man© 115V/1/60. Fan Motor control station. Rated up to 2 HP. Permits automatic start-stop of the fan from the extractor arm hood, hose reel or other device with Remote Switch. Remote mounted switches must be ordered separately(EG: LS-12 -
- [P-025-24S-208/230V-3PH-7.5 HP](#) Energy Saver E- Man© 208-230V/3/60. Fan Motor control station. Rated up to 7.5 HP. Permits automatic start-stop of the fan from the extractor arm hood, hose reel or other device with Remote Switch. Remote mounted switches must be ordered separately (EG: L
- [P-025-24S-240V-1PH-3HP](#) Energy Saver E- Man© 240V/1/60. Fan Motor control station. Rated up to 3 HP. Permits automatic start-stop of the fan from the extractor arm hood, hose reel or other device with Remote Switch. Remote mounted switches must be ordered separately (EG: LS-12 -
- [P-025-24S-460V-3PH-20HP](#) Energy Saver E- Man© 460V/3/60. Fan Motor control station. Rated up to 20 HP. Permits automatic start-stop of the fan from the extractor arm hood, hose reel or other device with Remote Switch. Remote mounted switches must be ordered separately (EG: LS-12
- [P-025-24S-575V-3PH-20HP](#) Energy Saver E- Man© 575V/3/60. Fan Motor control station. Rated up to 20 HP. Permits automatic start-stop of the fan from the extractor arm hood, hose reel or other device with Remote Switch. Remote mounted switches must be ordered separately (EG: LS-12

**Sensors (when ordering main unit)**

- [MS-12](#) Micro-switch for the automatic "Start/Stop" of the fan and/or automatic damper

**Hose Clamps - Bridge Type (Necessary to go over the helix of the hose)**

- [MD-530-100-100](#) 4" Ø Bridge Clamp. Clamping range of 100mm-120mm
- [MD-530-125-100](#) 5" Ø Bridge Clamp. Clamping range of 120mm-140mm
- [MD-530-150-100](#) 6" Ø Bridge Clamp. Clamping range of 150mm-170mm
- [MD-530-200-100](#) 8" Ø Bridge Clamp. Clamping range of 200mm-220mm

**14-04**

CUSTOMER:  
 CUSTOMER P.O.:  
 PROJECT:  
 ENGINEER:  
 SALES REP.:  
 IDENTIFICATION / TAGGING:



The device depicted and described hereon embodies proprietary information owned by the manufacturer. All design, manufacturing, reproduction, sales and patent rights regarding this device or drawing reserved except where explicit right is guaranteed in writing. We reserve the right to make design changes.

Drawn by: Janos B  
 Date: 9/20/2011  
 Scale: NTS  
 Weight: N/A

**14-04 Low Temp & High Temp Spring Recoil Hose Reels**  
**Specification Drawing**

Drawing No.: -  
 File Name: (14-04) Spring Recoil Hose Reel - S  
 Material: -  
 Sheet: 4/5

**MODELS & OPTIONS:**

**Installation Accessories**

- [IN-NLS-8](#)
- [PDK-8](#)
- [PDK-RF-8](#)
- [HRM-AMD](#)

8" No-Loss Stack, 20 Gauge Galvanized, 4' overall height\*. Complete with Internal Backdraft Damper. \* alternate heights available upon request.

Industrial grade duct kit for direct exhausting of P-Max fans - for Wall exhaust

Industrial grade duct kit for direct exhausting of P-Max fans - for Ceiling/Roof exhaust. Complete with Gravity Back Draft damper.

Mechanical automatic damper which opens when is unwound and closes when reel is retracted

**Fan Control Panels (when ordering main unit)**

- [P-024-1](#)
- [P-024-2](#)
- [P-024-3](#)
- [P-024-4](#)
- [P-024-5](#)
- [P-024-6](#)
- [P-024-8](#)
- [P-024-9](#)

115V/1/60 Fan Motor control station. Permits manual start-stop of the fan. Comes complete with motor overload protection on/off 14A control power cord and plug. Overload rating according to the FLA of the motor. Field assembly & installation required.

Fan Motor control station. Permits manual start-stop of the fan. Comes complete with motor overload protection and on/off control. 0.6-1.0A OVERLOAD---> HP rating: 1/4@230/3/60, 1/2@460/3/60, 1/2@575/3/60

Fan Motor control station. Permits manual start-stop of the fan. Comes complete with motor overload protection and on/off control. 1-1.6A OVERLOAD ---> HP rating: 1/3@230/3/60, 3/4@460/3/60, 1.0@575/3/60

Fan Motor control station. Permits manual start-stop of the fan. Comes complete with motor overload protection and on/off control. 1.6-2.5A OVERLOAD ---> HP rating: 1/2@230/3/60, 1.0@460/3/60, 1.5@575/3/60

Fan Motor control station. Permits manual start-stop of the fan. Comes complete with motor overload protection and on/off control. 2.5-4A OVERLOAD---> HP rating: 1.0@230/3/60, 2.0@460/3/60, 3.0@575/3/60

Fan Motor control station. Permits manual start-stop of the fan. Comes complete with motor overload protection and on/off control. 4.0-6.3A OVERLOAD---> HP rating: 0.25@115/1/60, 0.5@230/1/60, 1.5@230/3/60, 3/0@460/3/60, 5.0@575/3/60

Fan Motor control station. Permits manual start-stop of the fan. Comes complete with motor overload protection and on/off control. 10-16A OVERLOAD---> HP rating: 1.0@115/1/60, 2.0@230/1/60, 5.0@230/3/60, 10@460/3/60, 10@575/3/60V

Fan Motor control station. Permits manual start-stop of the fan. Comes complete with motor overload protection and on/off control. 16-20A OVERLOAD---> HP rating: 1.5@115/1/60, 3.0@230/1/60, 7.5.0@230/3/60, 15@460/3/60, 15@575/3/60V

**Fan Mounting Brackets**

- [P-033-HR](#)
- [P-045](#)
- [P-151](#)

P-MAX fan mounting bracket for spring recoil hose reels.

P-MAX fan mount bracket c/w swivel.For P-Max fan on H-Max Ext.Boom for Flexi-I,Pro-Flex Extr.Crane(4",5",6.5"),VE Ext.Boom for HoseReels&Hose Drops &VE articulating Crane for HoseDrops (4",5",6")

P-MAX fan mounting bracket c/w swivel. To be used to install a P-Max fan on a H-Max Extension Boom for Flexi-II and E-Z Arm, Pro-Flex Extraction Crane (8" dia.), VE Extension Boom for Hose Reels&Hose Drops (8" dia.) and VE articulating Crane for Hose Drop

CUSTOMER:
CUSTOMER P.O.:
PROJECT:
ENGINEER:
SALES REP.:
IDENTIFICATION / TAGGING:


[www.lev-co.com](http://www.lev-co.com) • 1.888.862.5356



The device depicted and described hereon embodies proprietary information owned by the manufacturer. All design, manufacturing, reproduction, sales and patent rights regarding this device or drawing reserved except where explicit right is guaranteed in writing. We reserve the right to make design changes.

Drawn by:	Janos B
Date:	9/20/2011
Scale:	NTS
Weight:	N/A

<b>14-04 Low Temp &amp; High Temp Spring Recoil Hose Reels</b>	
<b>Specification Drawing</b>	
Drawing No.:	File Name: (14-04) Spring Recoil Hose Reel - S
Material:	Sheet: 5/5