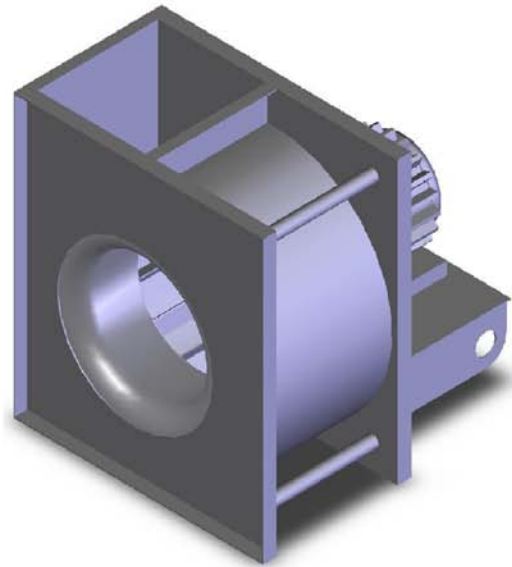


## ADVANTAGES OF DIRECT DRIVE ARRANGEMENT

- **COST**  
Lower initial cost **plus** lower maintenance cost (no v-belt drives, fan shaft or bearings to replace).
- **RATINGS**  
More ratings available. All sizes offered with two wheel diameters and fan housing widths from 100% to 50% in 5% increments.
- **COMPACT**  
Requires less space.
- **MOUNTINGS**  
Four discharge positions and two rotations (CW or CCW) plus fans can be mounted horizontally (Maximum 600 pound motor).
- **LESS WEIGHT**  
Requires less supporting structure.
- **CONSTRUCTION**  
Solidly built with continuously welded housings and mounting holes in all support flanges. All fans are mechanically run tested prior to shipment to ensure the balance of the assembled unit.



## ROTATION & DISCHARGE POSITIONS

8 DISCHARGE POSITIONS AVAILABLE

Discharges shown are determined by viewing fan from motor or drive side.



**CW-TH**  
Clockwise Top  
Horizontal  
Discharge



**CW-DB**  
Clockwise  
Down-Blast  
Discharge



**CW-BH**  
Clockwise  
Bottom  
Horizontal  
Discharge



**CW-UB**  
Clockwise  
Up-Blast  
Discharge



**CCW-TH**  
Counter-  
Clockwise Top  
Horizontal  
Discharge



**CCW-DB**  
Counter-  
Clockwise  
Down-Blast  
Discharge



**CCW-BH**  
Counter-  
Clockwise  
Bottom  
Horizontal  
Discharge



**CCW-UB**  
Counter-  
Clockwise  
Up-Blast  
Discharge

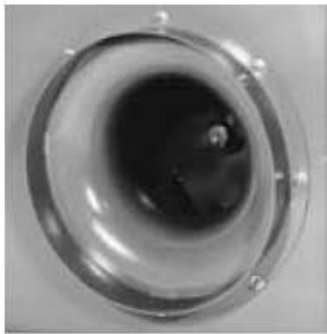


### DANGER

All fans & blowers shown have rotating parts and pinch points. Severe personal injury can result if operated without guards. Stay away from rotating equipment unless it is disconnected from its power source.

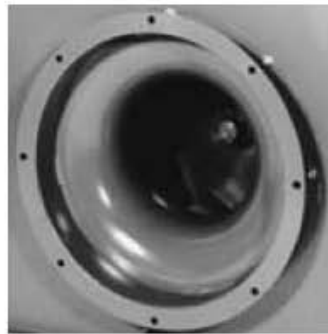
Read operating instructions.

## OPTIONAL ACCESSORIES



**Inlet Collar**

Inlet collar for slip fit connection to duct work.



**Inlet Flange**

Flanged inlet for bolted connection to duct work. Flange drilled with our standard hole pattern, see page 23. Outlet flange is standard and drilled per our standard hole pattern, see page 23. Undrilled flanges available at additional cost and extended delivery.



**Inlet Vane Control**

Inlet vane offers more efficient flow control compared to outlet damper. Manual control is standard. Automatic control is optional. Requires inlet collar and flange for mounting to fan.



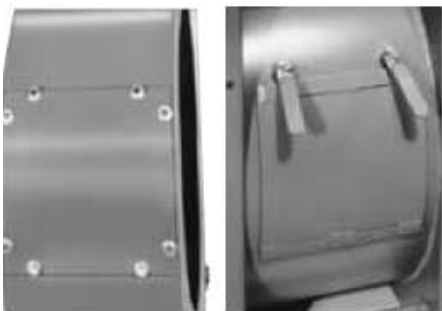
**Drain**

3/4" NPT, Female pipe coupling with plug. Welded to lowest point on inlet side plate.



**Inlet & Outlet Guards**

Inlet guard is welded, formed wire. Outlet guard is expanded metal. Guards are in accordance with OSHA.



**Inspection Door**

Bolted or quick-release doors positioned as specified on scroll. Rubber gasket standard up to 250°F (121°C). Ceramic fiber gasket standard at temperatures above 250°F (121°C).



**Outlet Damper**

Outlet damper provides low cost flow control. Opposed blade manually controlled construction is standard. Also available with automatic controllers.



**Shaft Seal**

Teflon shaft seal good to 400°F. (204°C.). Ceramic fiber gasket material with steel cover plate above 400°F. (205°C.).