

SPECIFICATIONS:

CONSTRUCTION: 16 and 14 Gauge steel cabinet finished with a 2-part chemical and oil resistant paint. Includes side access panel to motor, removable endcaps for easy access to filters, (2) hoppers with a 7.88 diameter outlet, (2) 10' E-Z Arms, and a direct driven, ball bearing, BI blower w/4-way adjustable airfoil blade exhaust grille. Motor wired to junction box outside unit. Motor starters/disconnects not included.

WEIGHT: 580 lbs. SHIP WT: 815 lbs.
AIRFLOW: 2000 CFM w/arms or Optional 8" inlets
 1800 CFM w/external HEPA/AD

NOISE: 82 dBA / 78 with silencer

ELECTRICAL: 3 HP 208-230/460/575/3/60, 9.2-8.0/4/3 amps, std.
 3 HP 220/380/440/3/50, 8.4/4.7/4.2 amps, std.

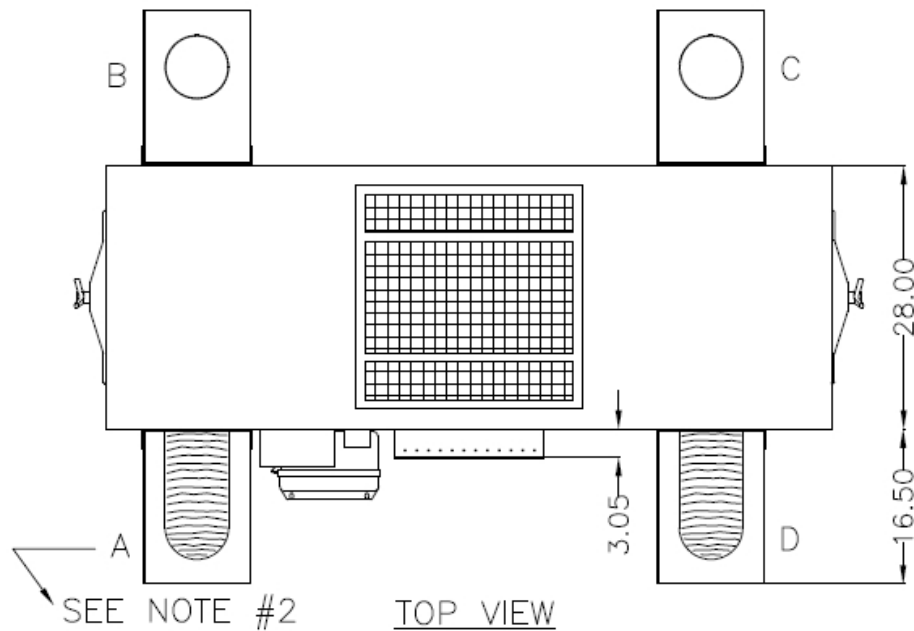
FIRE SUPPRESSION: Equipment provided by others.

MAIN FILTERS: (4) 150 ft² CLEAN 2 cartridges, std.
 (4) 75 ft² Fiber Dust cartridges, opt.
 (4) Spunbond cartridges, opt.

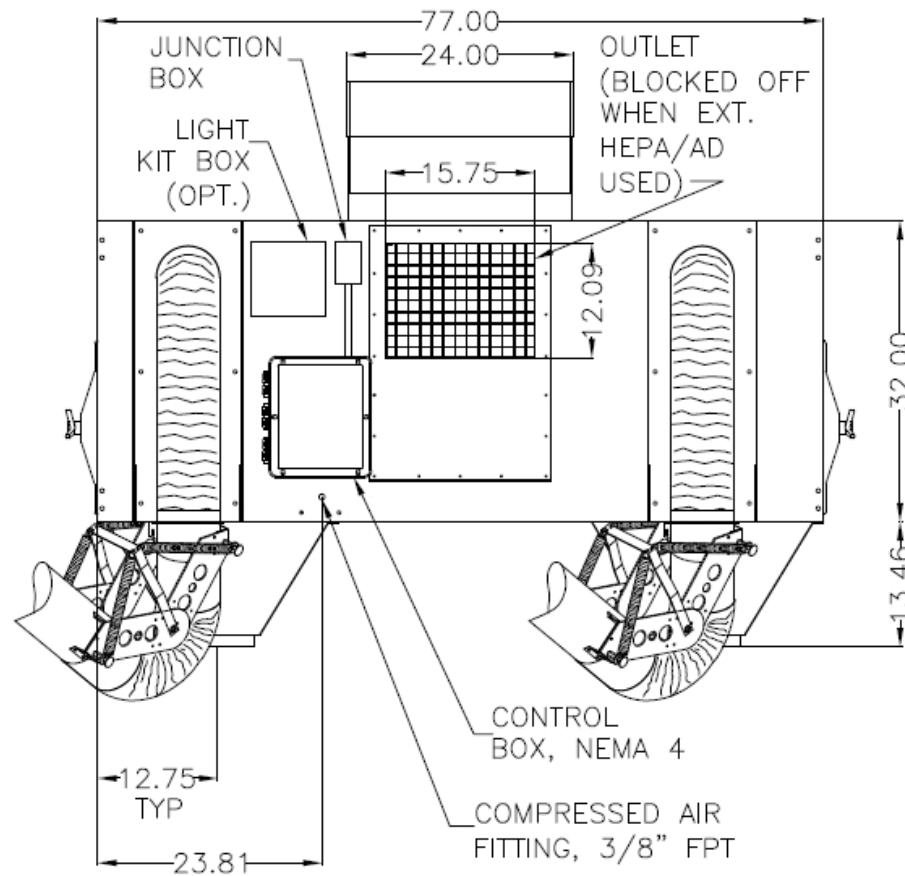
OTHER OPTIONS: Pressure gauge kit indicates filter changes
 Dual 14 ft. E-Z Arms
 Duct connection, 8" inlets in place of E-Z Arms™
 Silencer
 External AD
 External HEPA
 Light Kit

SPECIAL NOTES: Compressed air filter provided by others.

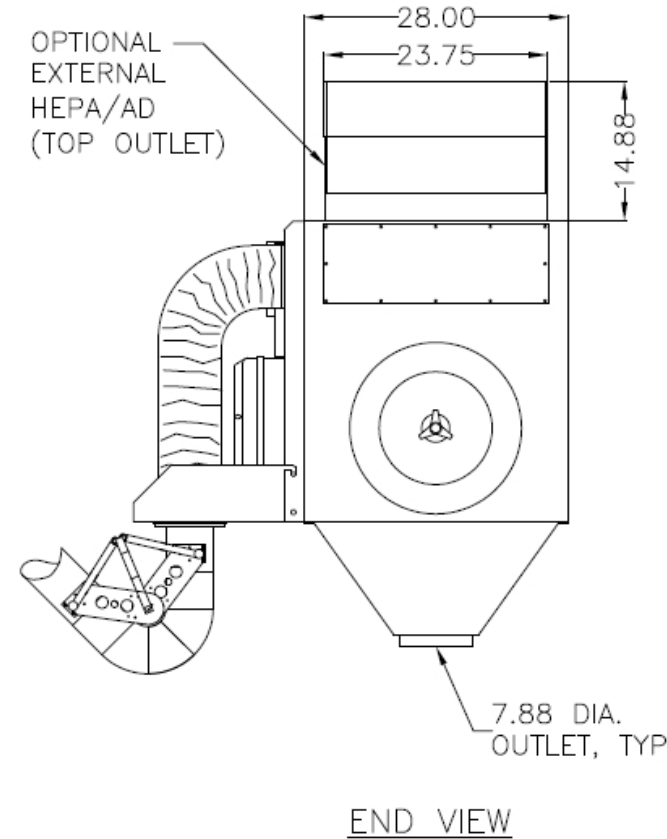
* AFS FILTER EFFICIENCIES BASED ON ASHRAE 52-76 TEST METHOD



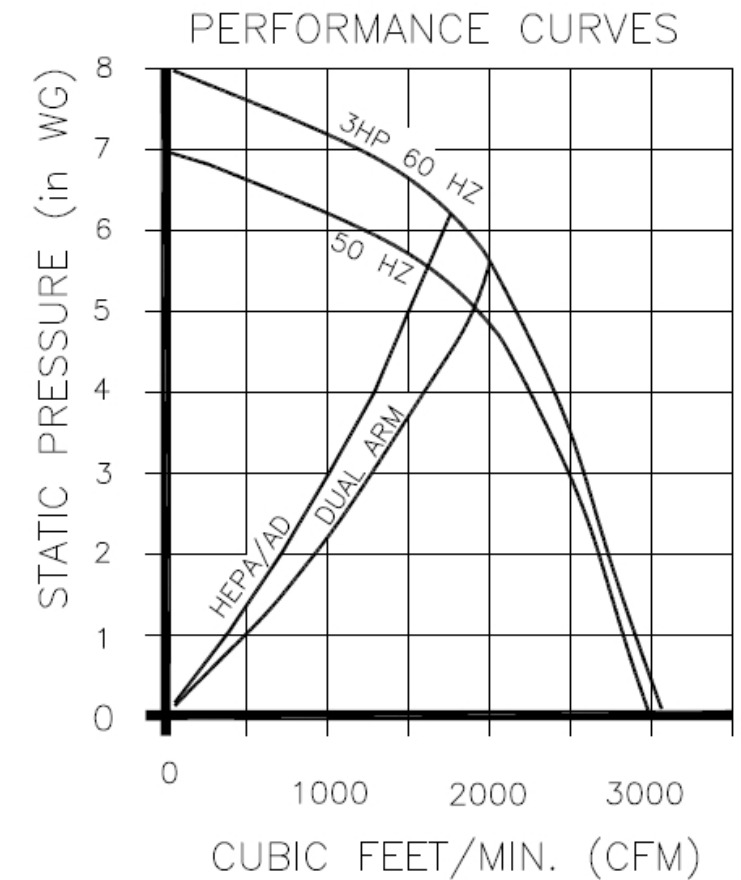
TOP VIEW



SIDE VIEW



END VIEW



07-04

CUSTOMER:
CUSTOMER P.O.:
PROJECT:
ENGINEER:
SALES REP.:
IDENTIFICATION / TAGGING:

> www.lev-co.com • 1.888.862.5356



The device depicted and described hereon embodies proprietary information owned by the manufacturer. All design, manufacturing, reproduction, sales and patent rights regarding this device or drawing reserved except where explicit right is guaranteed in writing. We reserve the right to make design changes.

Drawn by:	JANOS-B
Date:	3/22/2008
Scale:	NTS
Weight:	N/A

07-04 HC-4	
Specification Drawing	
Drawing No.:	File Name: (07-04) HC-4 - SD
Material:	Product manufactured by: Airflow SYSTEMS INC.
Sheet: 1/2	

MODELS & OPTIONS

Part #	Description
Main System / Part	
<input type="checkbox"/> ___ HC-4- EZ-ARMS-1	Horizontal cartridge collector w/(4) Clean 2 filter cartridges (2)10' E-Z Arms and Auto-Clean Off-Line Vibra-Pulse filter cleaning system and a 3 HP TEFC Motor 230-460/3/60 Hz
<input type="checkbox"/> ___ HC-4-EZ-ARMS-2	Horizontal cartridge collector w/(4) Clean 2 filter cartridges (2)10' E-Z Arms and Auto-Clean Off-Line Vibra-Pulse filter cleaning system and a 3 HP TEFC Motor 575-600/3/60 Hz
<input type="checkbox"/> ___ HC-4-FLEXI-1	Horizontal cartridge collector w/(4) Clean 2 filter cartridges (2) 10' Flexi-I Arms and Auto-Clean Off-Line Vibra-Pulse filter cleaning system and a 3 HP TEFC Motor 230-460/3/60 Hz
<input type="checkbox"/> ___ HC-4- FLEXI-2	Horizontal cartridge collector w/(4) Clean 2 filter cartridges (2) 10' Flexi-I Arms and Auto-Clean Off-Line Vibra-Pulse filter cleaning system and a 3 HP TEFC Motor 575/3/60 Hz
<input type="checkbox"/> ___ HC-4-DUCTED-1	Horizontal cartridge collector w/(4) Clean 2 filter cartridges, Auto-Clean Off-Line Vibra-Pulse filter cleaning system and a 3 HP TEFC Motor 230/460/3/60 Hz. Unit comes c/w 2 duct connections.
<input type="checkbox"/> ___ HC-4-DUCTED-2	Horizontal cartridge collector w/(4) Clean 2 filter cartridges, Auto-Clean Off-Line Vibra-Pulse filter cleaning system and a 3 HP TEFC Motor 575/3/60 Hz. Unit comes c/w 2 duct connections.

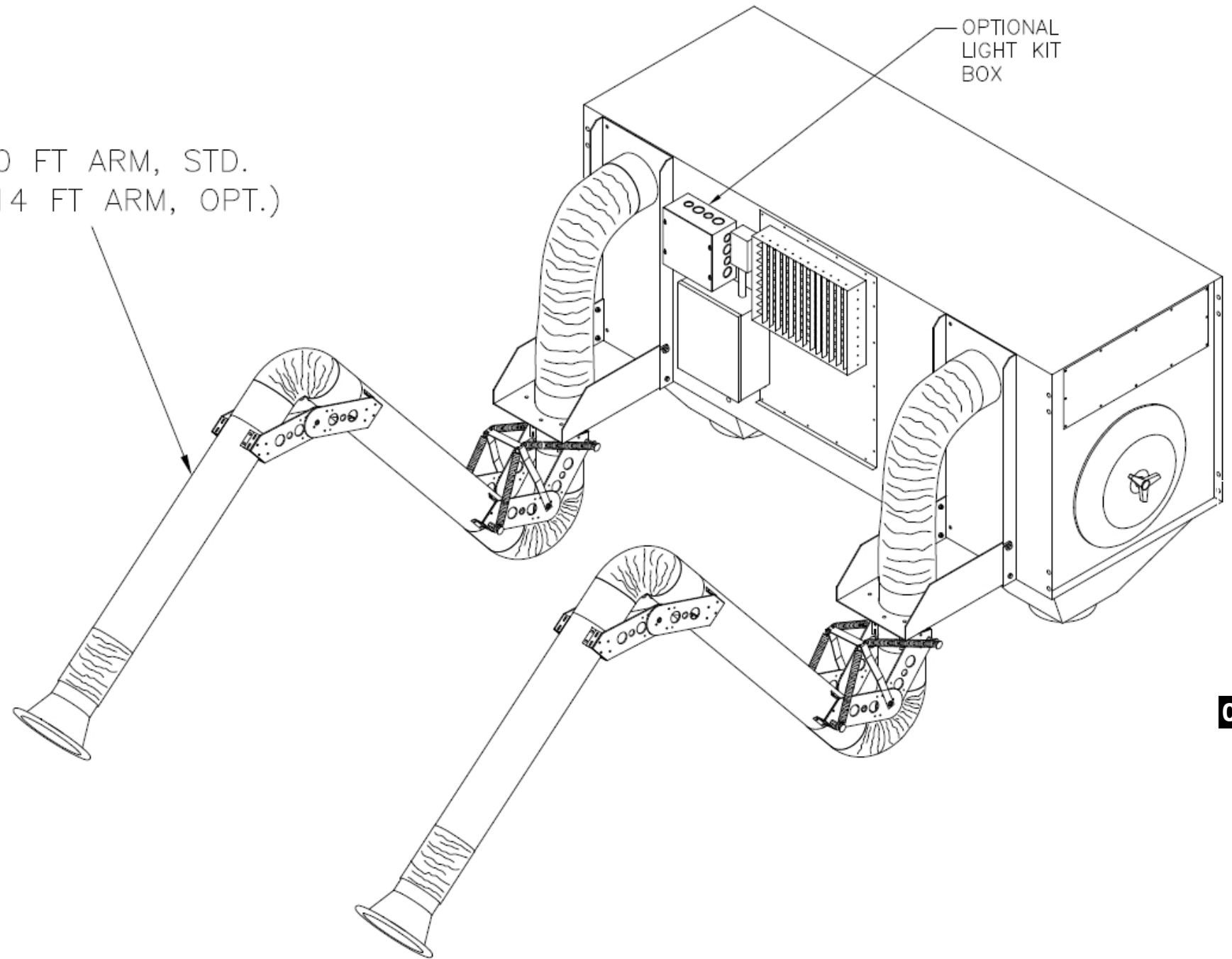
Filter Options (when ordering main unit)	
<input type="checkbox"/> ___ HC-4-HEPA	External HEPA
Preventative Maintenance Pressure Gauges, etc. (when ordering main unit)	
<input type="checkbox"/> ___ HC-4-PG-10	0-10" magnahelic pressure gauge, approximately 5" diameter size. Surface mounted.
Sound Attenuation	
<input type="checkbox"/> ___ HC-4-S-EXT	Exhaust Silencer Option for Standard HC-4 Unit

Misc. Options (when ordering main unit)	
<input type="checkbox"/> ___ HC-4-7E14	(2) 7" E-Z ARM 14' Long Option for Standard HC-4 Unit

Replacement filters - (Quantity discounts available upon request)	
<input type="checkbox"/> ___ 7FR02020	Generic Flame Retardant Cartridge Filter made of 80/20% Cell/Poly

Installation Option & Accessories	
<input type="checkbox"/> ___ HC-4-DRUMLID	Drum Lid, 55 Gallon Option for Standard HC-4 Unit
<input type="checkbox"/> ___ HC-4-RA	Remote Arm Kit Option for Standard HC-4 Unit
<input type="checkbox"/> ___ HC-4-BRACKET	Mounting Bracket Option for Standard HC-4 Unit

10 FT ARM, STD.
(14 FT ARM, OPT.)



07-04

CUSTOMER:
CUSTOMER P.O.:
PROJECT:
ENGINEER:
SALES REP.:
IDENTIFICATION / TAGGING:

> www.lev-co.com • 1.888.862.5356

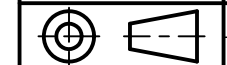
lev-co

The device depicted and described hereon embodies proprietary information owned by the manufacturer. All design, manufacturing, reproduction, sales and patent rights regarding this device or drawing reserved except where explicit right is guaranteed in writing. We reserve the right to make design changes.

Drawn by: JANOS-B
Date: 3/22/2008
Scale: NTS
Weight: N/A

07-04 HC-4

Specification Drawing



Drawing No.: - File Name: (07-04) HC-4 - SD

Material: Product manufactured by: Sheet: 2/2

DUST COLLECTION • FUME EXTRACTION • OIL MIST FILTRATION • VEHICLE EXHAUST

Airflow
SYSTEMS INC.