

CONSTRUCTION: 16 Gauge steel cabinet finished with a 2-part chemical and oil resistant paint. Includes 0-frame main filter seal, top access panel to motor, and a belt driven ball bearing 10x10 blower w/4-way adjustable airfoil blade exhaust grille. Motor wired to junction box outside unit. Motor starters/disconnects not included.

WEIGHT: 240 lbs.
AIRFLOW: 3600 CFM (2 HP std.)
 4500 CFM (3 HP opt.)
NOISE: 74 dBA / 77 dBA
 71 dBA / 74 dBA w/silencer

ELECTRICAL: 2 HP 208-230/460/3/60, 6.5-6.2/3.1 amps, std.
 3 HP 208-230/460/3/60, 8.6/4.3 amps, opt.

FILTER SEAL: Welded picture frame with gasket.

SPECIFICATIONS:

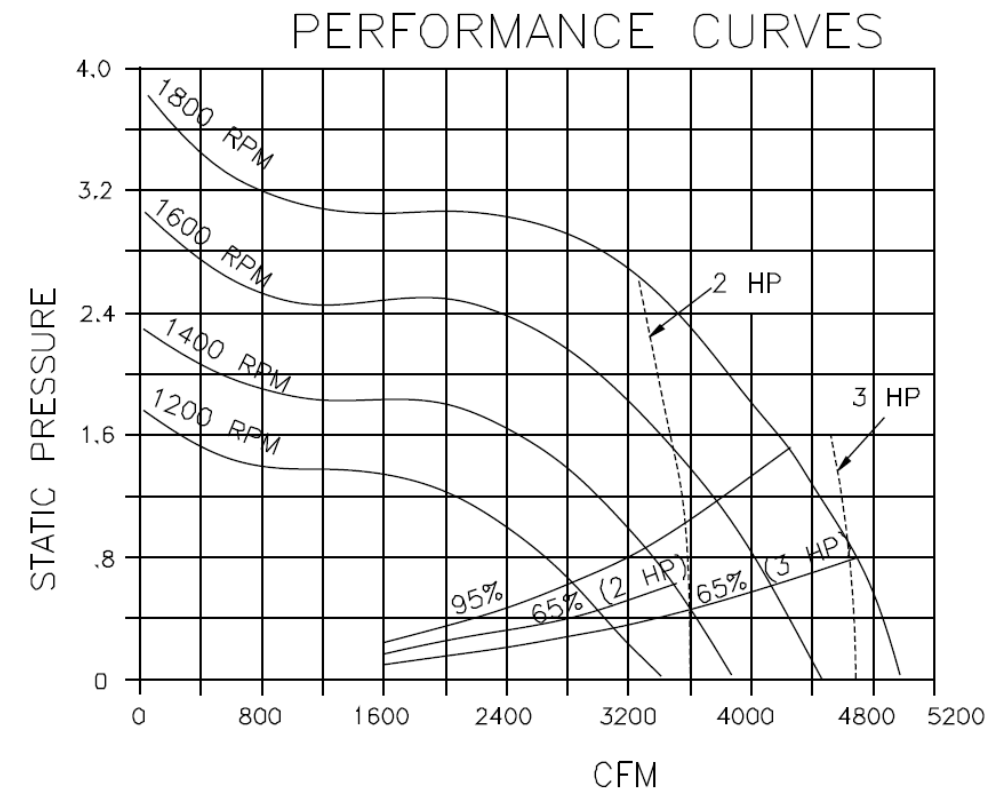
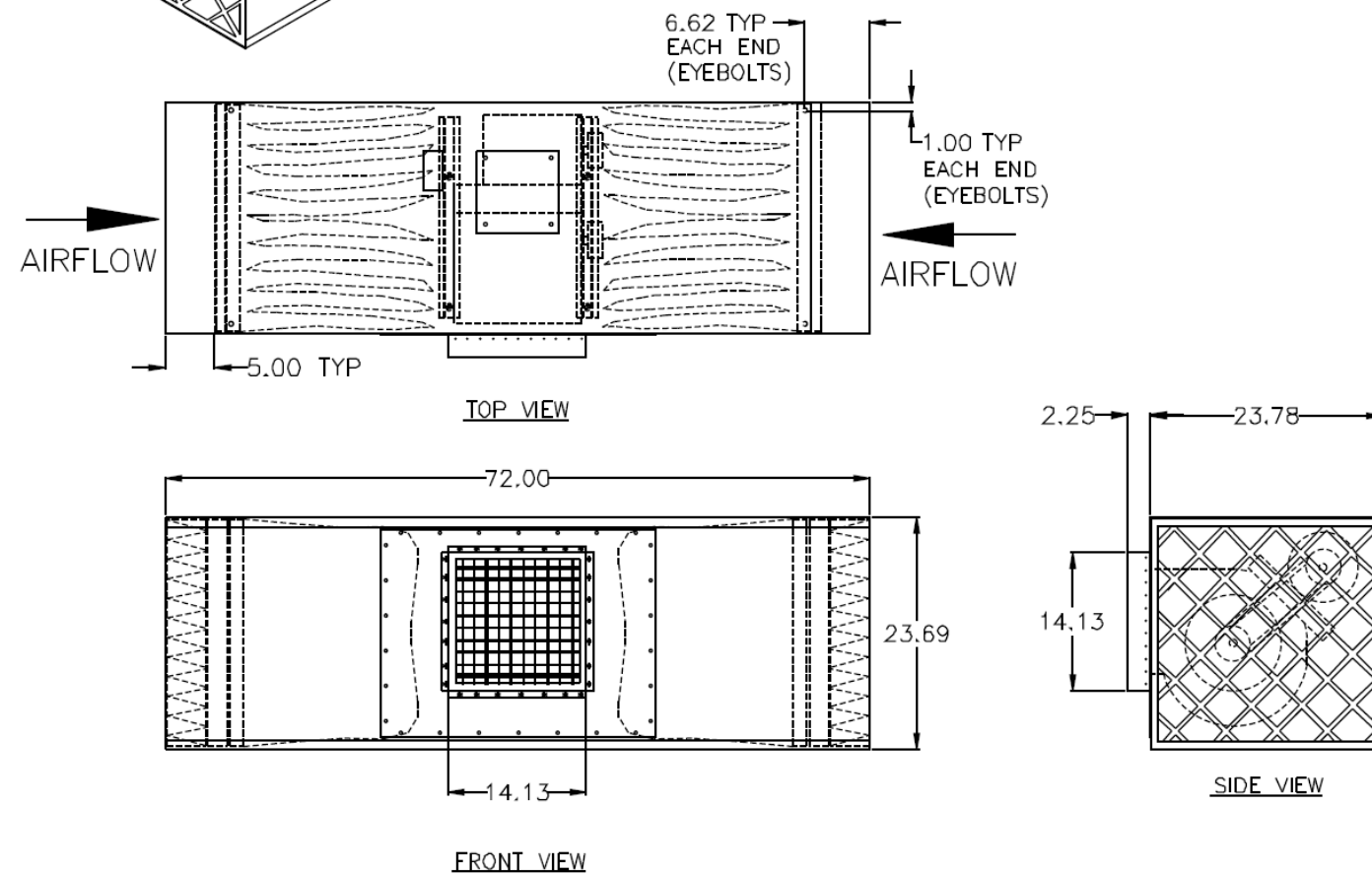
AIR TO CLOTH: 27 CFM/FT² (2 OR 3 HP)

PREFILTERS: (2) 4" Pleated std.

MAIN FILTERS: (2) 66 ft² multi-pocket 65%, std.
 (2) 95% - opt.
 (2) Easy clean, opt.
 (2) 83 ft² multi-pocket 65% (3 HP option)

OTHER OPTIONS: Pressure gauge kit indicates filter changes
 Mounting eye-bolts.

* AFS FILTER EFFICIENCIES BASED ON ASHRAE 52-76 TEST METHOD



NOTES:

Items designated as are included in this proposal

CUSTOMER:
CUSTOMER P.O.:
PROJECT:
ENGINEER:
SALES REP.:
IDENTIFICATION / TAGGING:

> www.lev-co.com • 1.888.862.5356



The device depicted and described hereon embodies proprietary information owned by the manufacturer. All design, manufacturing, reproduction, sales and patent rights regarding this device or drawing reserved except where explicit right is guaranteed in writing. We reserve the right to make design changes.

Drawn by:	Janos B
Date:	12/19/2008
Scale:	NTS
Weight:	N/A



T140 AIR CLEANER	
Specification Drawing	
Drawing No.:	File Name:T140 - SD
Material:	Sheet: 1/1