

CONSTRUCTION:

16 Gauge welded zinc coated steel cabinet, finished with a two part chemical and oil resistant paint, side access doors to filters and motor. Belt driven Ball Bearing 10x10 blower w/adj. speed pulley, 4-way adjustable airfoil blade exhaust grille, Motor wired to junction box outside unit.

WEIGHT:

241 lbs.

AIRFLOW:

2800 CFM
1600 CFM W/HEPA or V-Bank

NOISE:

75 dBA / 69 dBA with silencer - std.
79 dBA / 75 dBA with silencer - 3 HP

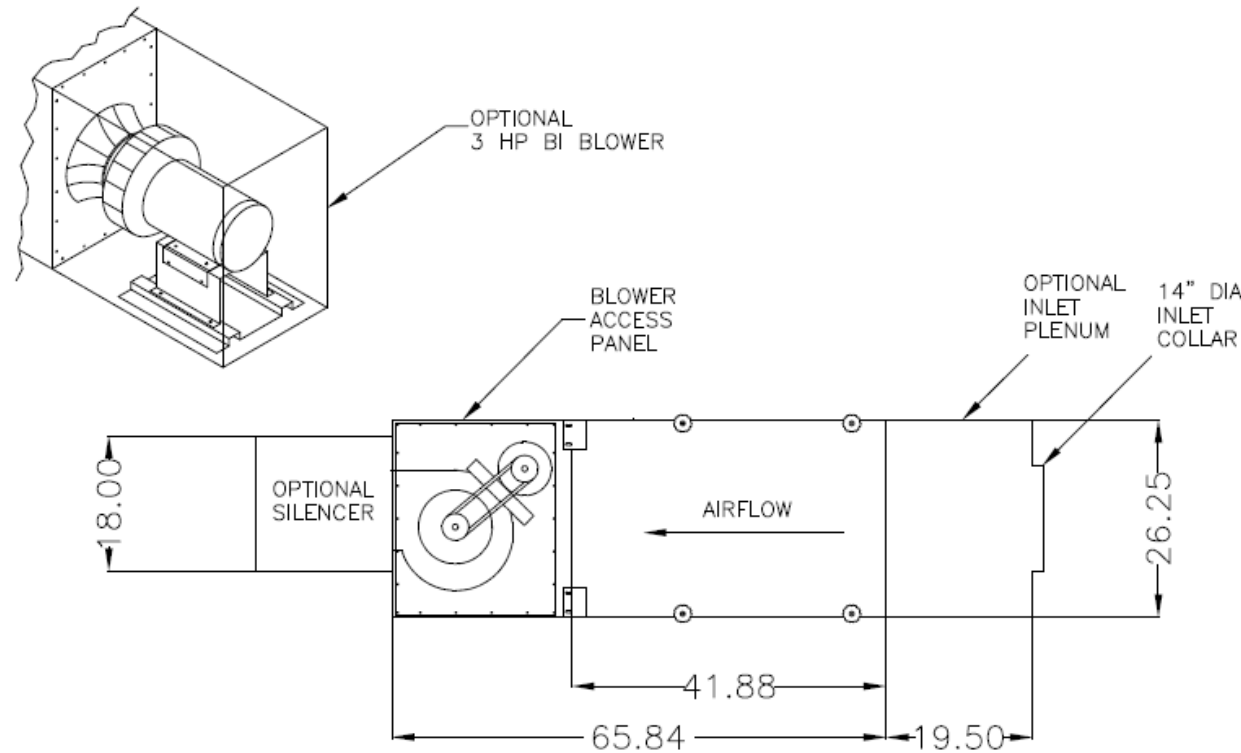
ELECTRICAL:

- 1.5 HP 208-230/460/3/60, 5/2.5 amps, std.
- 1.5 HP 115/230/1/60, 16.0/8.0 amps, opt.
- HP-3 HP 208-230/460/3/60, 9.2-8.0/4.0 amps, opt.
- 3 HP 115/230/1, 14.5 amps, opt.

FILTER SEAL:

Ultra-Seal™ welded picture frame with positive sealing filter locking mechanism for all main filters and all HEPA filters or adsorber modules (where used). Slide in tracks shall be used for prefilters only

FIRE SUPPRESSION: Equipment provided by others.



SPECIFICATIONS:

PREFILTERS:

- (1) 4" Pleated std.
- (1) 2" Aluminum Mesh, opt.
- (1) Chevron Filter, opt.

MAIN FILTERS:

- (1) 96 ft² bag, 55/60% Std.
- (1) 90/95% - opt.
- (1) Easy clean, opt.

AFTER FILTERS:

- (1) 4" pleat prefilter followed by (1) 36 ft², 95% bag filter, which is followed by (1) 99.97% HEPA filter.

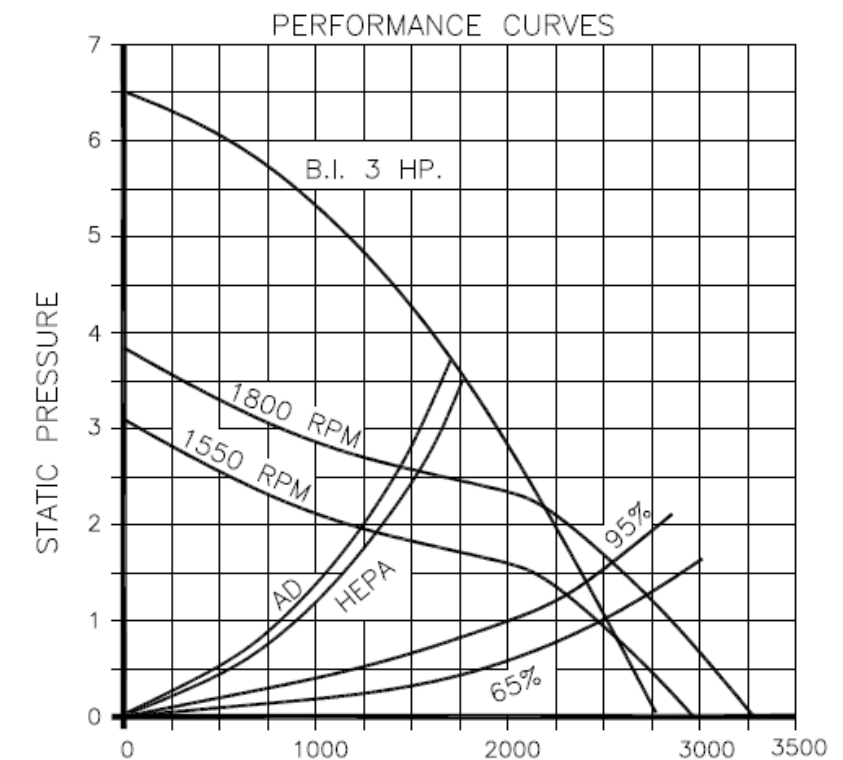
AD OPTION:

- (1) 4" pleat prefilter followed by (1) 36 ft², 95% bag filter, followed by (2) refillable AD modules, 20 lb. capacity each, and (1) 2" pleat afterfilter.

OTHER OPTIONS:

- Pressure gauge kit indicates filter changes
- Eyebolts

* AFS FILTER EFFICIENCIES BASED ON ASHRAE 52-76 TEST METHOD



10-01

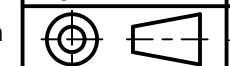
CUSTOMER:	
CUSTOMER P.O.:	
PROJECT:	
ENGINEER:	
SALES REP.:	
IDENTIFICATION / TAGGING:	

> www.lev-co.com • 1.888.862.5356



The device depicted and described hereon embodies proprietary information owned by the manufacturer. All design, manufacturing, reproduction, sales and patent rights regarding this device or drawing reserved except where explicit right is guaranteed in writing. We reserve the right to make design changes.

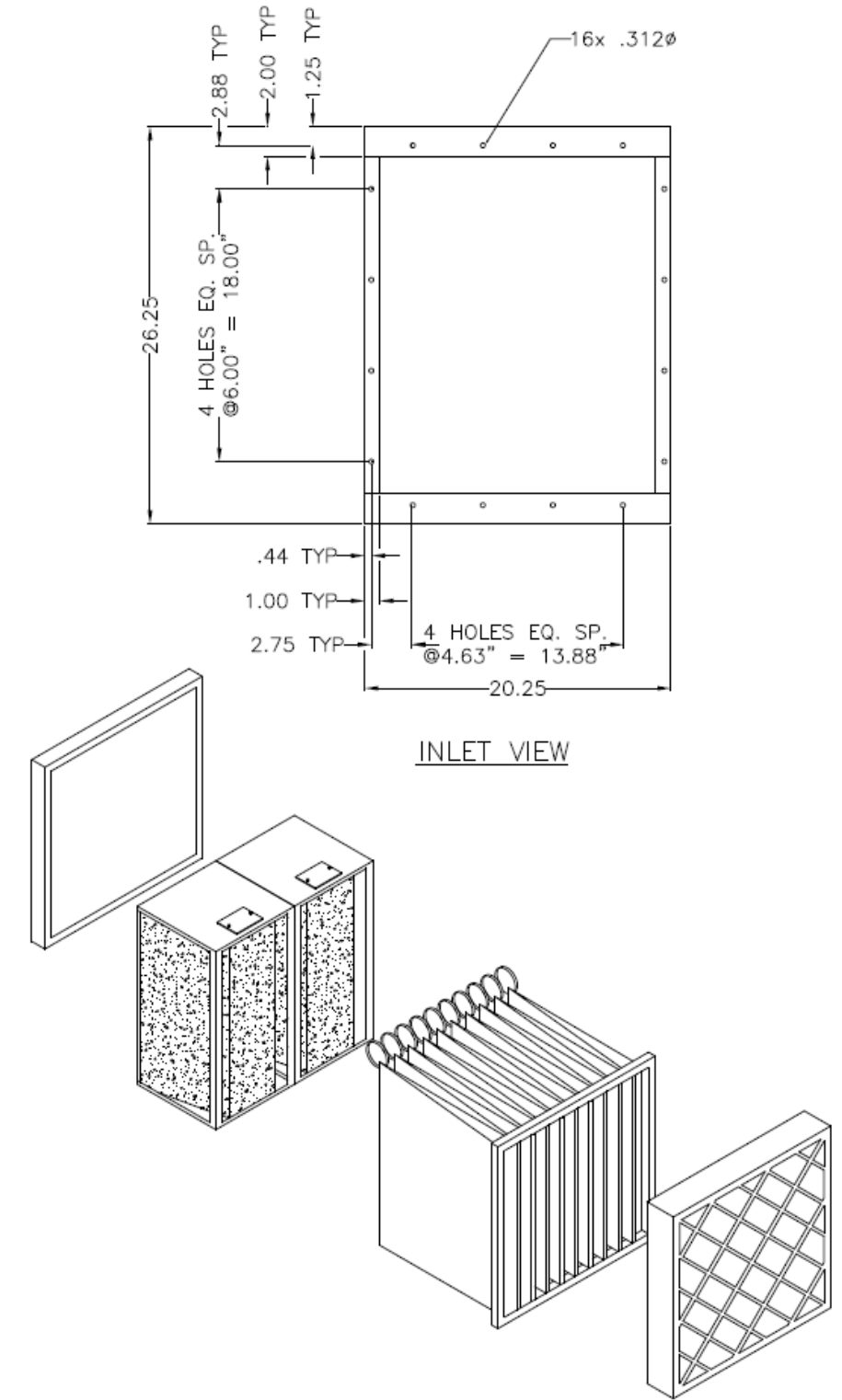
Drawn by:	JANOS-B
Date:	5/1/2008
Scale:	NTS
Weight:	N/A



10-01 F90 Air Cleaner	
Specification Drawing	
Drawing No.: -	File Name: (10-01) F90 - SD
Material:	Product manufactured by: Airflow SYSTEMS INC.
Sheet: 1/2	

MODELS & OPTIONS:

- | Part # | Description |
|---|--|
| Main System / Part | |
| <input type="checkbox"/> F90-1 | 500-2000 CFM industrial air cleaner with (1) 4" deep 30" pleated prefilter, (1) 65% bag filter (96ft ²) and a 1.5 HP TEFC motor. Please specify voltage when ordering. |
| <input type="checkbox"/> F90-2 | 500-2000 CFM industrial air cleaner with (1) 4" deep 30" pleated prefilter, (1) 65% bag filter (96ft ²) and a 1.5 HP TEFC motor. Pls specify voltage when ordering. |
| Fan / Motor Upgrades or Options (when ordering main unit) | |
| <input type="checkbox"/> F90-3HP | 3HP BI Blower Option for Standard F90 Unit |
| <input type="checkbox"/> F90-3HP-1PH | 3HP 1 Phase BI Blower Option for Standard F90 Unit |
| <input type="checkbox"/> F90-1 PHASE | 115V Option for Standard F90 Unit |
| Filter Options (when ordering main unit) | |
| <input type="checkbox"/> F90-AD | AD Module Option for Standard F90 Unit |
| <input type="checkbox"/> F90-CV | Chevron Filter Option for Standard F90 Unit |
| <input type="checkbox"/> F90-HEPA | 99.97% DOP HEPA Filter Option for Standard F90 Unit |
| <input type="checkbox"/> F90-R | Reduced Maintenance Prefilter Option for Standard F90 Unit |
| <input type="checkbox"/> F90-95% | 95% Bag Filter Option for Standard F90 Unit |
| <input type="checkbox"/> F90-2A | 2" Mesh Prefilter Option for Standard F90 Unit |
| <input type="checkbox"/> F90-EC | Easy Clean Bag Filter Option for Standard F90 Unit |
| <input type="checkbox"/> F90-2P | 2" Polyester Prefilter, 3.3 sq. ft. |
| <input type="checkbox"/> F90-95DOP | Incl. 95% DOP preceded by 95% bag filter (add 40 lbs. to shipping wt.). Rated 1600 CFM. |
| Preventative Maintenance Pressure Gauges, etc. (when ordering main unit) | |
| <input type="checkbox"/> F90-PG-10 | 0-10" magna-helic pressure gauge, approximately 5" diameter size. Surface mounted. |
| Misc. Options | |
| <input type="checkbox"/> F90-DK | Drain kit for F90 unit (2 kits needed with Chevron Option) |
| Sound Attenuation | |
| <input type="checkbox"/> F90-S-EXT | Silencer Option for Standard F90 Unit |
| Replacement filters - (Quantity discounts available upon request) | |
| <input type="checkbox"/> 2AF18032 | Easy Clean Bag Filter |
| <input type="checkbox"/> 2AF48100 | Chevron Filter |
| <input type="checkbox"/> 2AF90002 | AD Module |
| <input type="checkbox"/> 2AZ20009 | 2" Polyester Prefilter |
| <input type="checkbox"/> 2AZ20014 | Polyester Prefilter, for R option only |
| <input type="checkbox"/> 7FA80201 | 2" Mesh Prefilter |
| <input type="checkbox"/> 7FB65201 | 65% Short Bag Filter |
| <input type="checkbox"/> 7FB65232 | 65% Bag Filter |
| <input type="checkbox"/> 7FB90201 | 95% Short Bag Filter |
| <input type="checkbox"/> 7FB90232 | 95% Bag Filter |
| <input type="checkbox"/> 7FH99212 | 99.97% DOP HEPA Filter |
| <input type="checkbox"/> 7FP30204 | 4" Pleated Prefilter |
| <input type="checkbox"/> Charcoal-18 | 18 lbs. of activated charcoal |
| Installation Option & Accessories | |
| <input type="checkbox"/> F90-EB | 3/8" Eyebolts Option for Standard F90 Unit |
| <input type="checkbox"/> F90-IA | Additional Inlet Collar Option for Standard F90 Unit |
| <input type="checkbox"/> F90-SP | Source Capture Plenum Option for Standard F90 Unit |



FILTER CONFIGURATION FOR F-90,AD

10-01

CUSTOMER:
 CUSTOMER P.O.:
 PROJECT:
 ENGINEER:
 SALES REP.:
 IDENTIFICATION / TAGGING:

> www.lev-co.com • 1.888.862.5356



The device depicted and described hereon embodies proprietary information owned by the manufacturer. All design, manufacturing, reproduction, sales and patent rights regarding this device or drawing reserved except where explicit right is guaranteed in writing. We reserve the right to make design changes.

Drawn by: JANOS-B
 Date: 5/1/2008
 Scale: NTS
 Weight: N/A

10-01 F90 Air Cleaner
 Specification Drawing

Drawing No.: - File Name: (10-01) F90 - SD
 Material: Product manufactured by: **Airflow SYSTEMS INC.** Sheet: 2/2