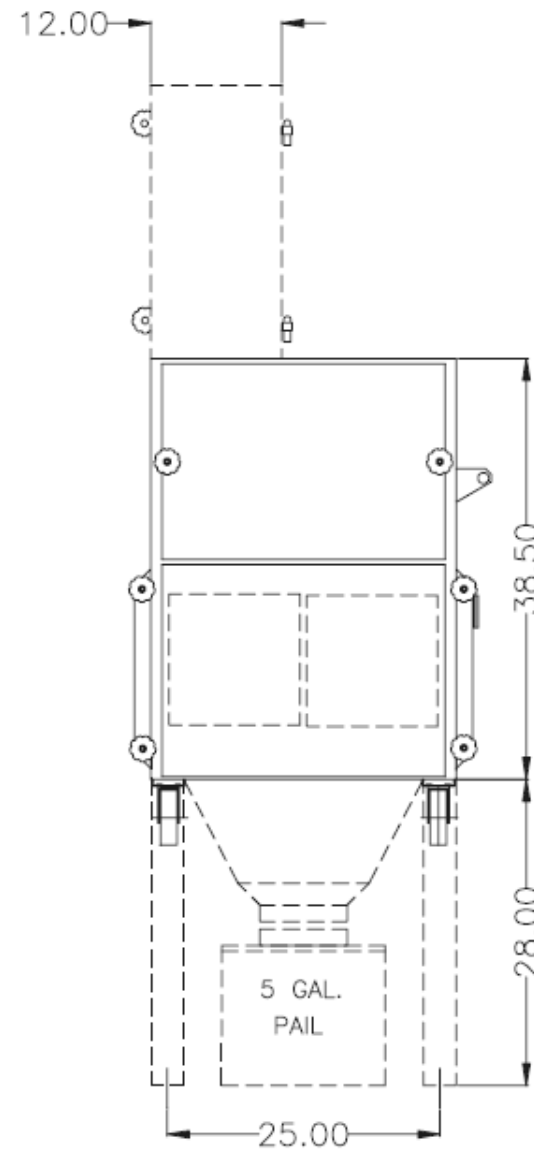
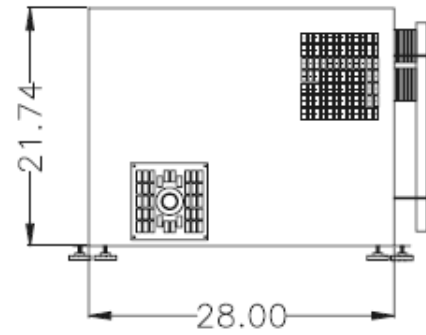


SPECIFICATIONS:



CONSTRUCTION: 14 Gauge painted steel cabinet finished with 2-part chemical and oil resistant paint. Includes side access doors to filters, dust pan, and direct drive motor/blower, 5" swivel casters, and manual push-button Vibra-Pulse® control for self-cleaning.

WEIGHT: 304 lbs.
AIRFLOW: 145 CFM, 60" wg max. (2.5 HP)
 210 CFM, 80" wg max. (4.0 HP)

NOISE: 2.5 HP - 72 dBA
 4.0 HP - 75 dBA

ELECTRICAL: 2.5 HP 208-230/460/3/60, 6.9/3.45 amps, std.
 2.5 HP 115/208-230/1/60, 22.4/12.4-11.2 amps, opt.
 4.0 HP 208-230/460/3/60, 10.6-10.2/5.1 amps, opt.

FIRE SUPPRESSION: Equipment provided by others.

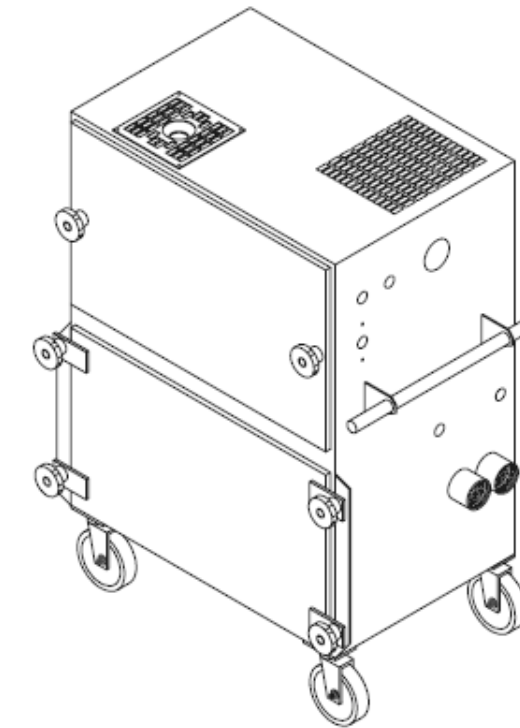
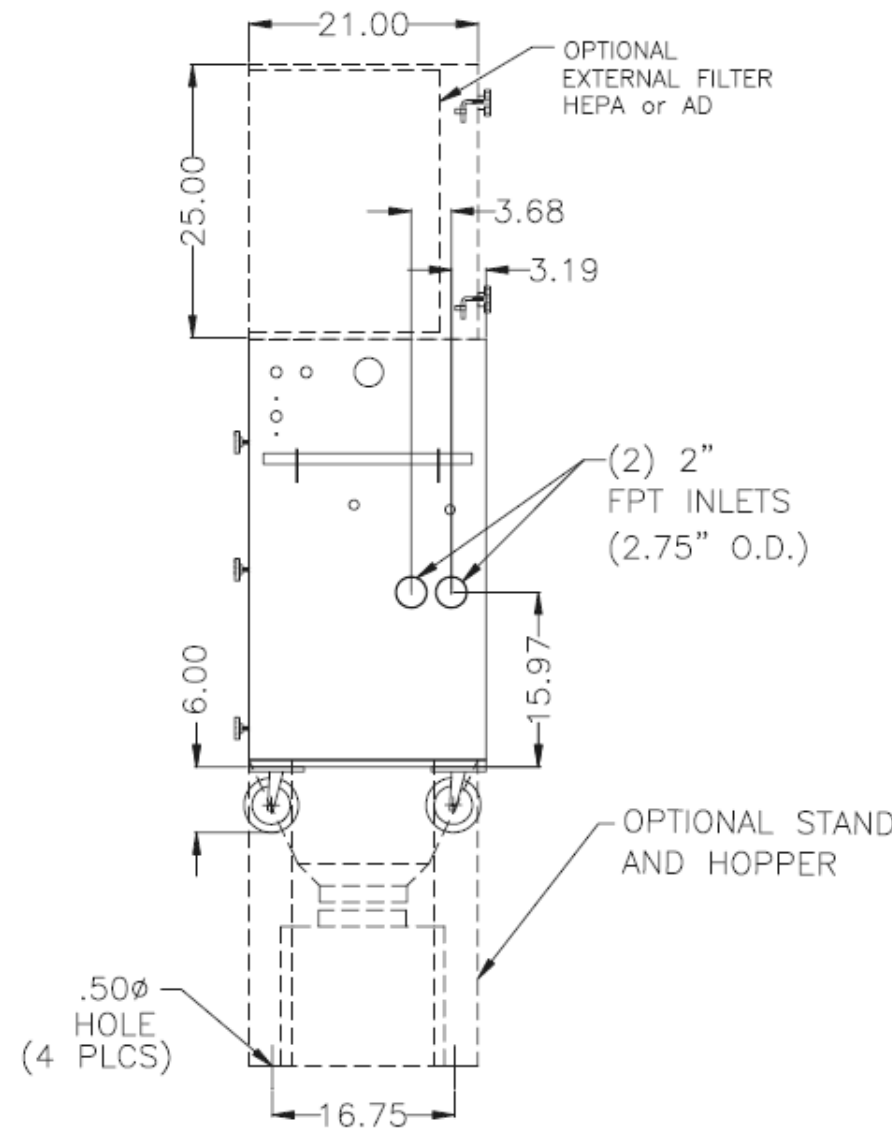
MAIN FILTERS: (2) Clean 2® cartridges-12"x12", 107 ft², ea.
 (2) FiberDust® cartridges, opt.

AFTER FILTERS: (1) External HEPA filter, 99.97%, opt.

OTHER OPTIONS: Pressure gauge kit indicates filter changes
 Filter/ regulator gauge.
 5 Gal. stand and hopper
 Big wheel kit.
 Auto Clean

SPECIAL NOTES: Compressed air filter provided by others.

* AFS FILTER EFFICIENCIES BASED ON ASHRAE 52-76 TEST METHOD



12-03

CUSTOMER:
 CUSTOMER P.O.:
 PROJECT:
 ENGINEER:
 SALES REP.:
 IDENTIFICATION / TAGGING:

> www.lev-co.com • 1.888.862.5356

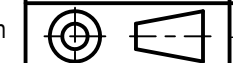
lev-co

The device depicted and described hereon embodies proprietary information owned by the manufacturer. All design, manufacturing, reproduction, sales and patent rights regarding this device or drawing reserved except where explicit right is guaranteed in writing. We reserve the right to make design changes.

Drawn by: JANOS B
 Date: 5/2/2008
 Scale: NTS
 Weight: N/A

**12-03 V2
 Portable**

Specification Drawing



Drawing No.: - File Name: (12-03) V2 Portable - SD
 Material: Product manufactured by: Sheet: 1/2

MODELS & OPTIONS

Part # Description

Main System / Part

- V2-2.5-1 Portable high vacuum cartridge collector c/w 2.5 HP motor 230/460/3/60 Hz
- V2-2.5-2 Portable high vacuum cartridge collector c/w 2.5 HP motor 575/3/60 Hz

Filter Options (when ordering main unit)

- V2-EXAD External AD Module Option for Standard V-2 Unit
- V2-EXHE External 99.97% HEPA Filter Option for Standard V-2 Unit

Preventative Maintenance Pressure Gauges, etc. (when ordering main unit)

- V2-AP-3 Off Line Auto Clean Option, 3 Phase Option for Standard V-2 Unit

Misc. Options

- V2-BW Big Wheel Kit Option for Standard V-2 Unit
- V2-HOPPER 5 Gallon Hopper Option for Standard V-2 Unit
- V2-HOSE 1.75" Flame Retardant Flex Hose-25' Option for Standard V-2 Unit
- V2-REG Regulator Gauge Option for Standard V-2 Unit
- V2-VALVE 2" Ball Valve Option for Standard V-2 Unit
- DCH-1-EXPVENT Explosion Vent door for single cartridge collectors. (PCH-1, ALH-1, DCH-1, DTH-1, DS-1 & Mini-Pac.
- SGA-01 Smokeless Gun Adapter. Adapts to welding gun for on-tool capture of welding smoke. (Fits most standard welding guns.) 1 1/4" hose connection. Hose & hose clamps must be ordered separately

Sound Attenuation

- 2KT97702 Silencer for V2 unit.
- 7HG90002 Muffler for V2 unit

"Hi-Vac" Hoses, Crush-resistant

- HVH-CR-1.25 1.25" diameter "HI VAC" Flexible hose - price per foot
- HVH-CR-1.5 1.5" diameter "HI VAC" Flexible hose - price per foot
- HVH-CR-2.0 2.0" diameter "HI VAC" Flexible hose - price per foot
- HVH-CR-2.5 2.5" diameter "HI VAC" Flexible hose - price per foot
- HVH-CR-3.0 3.0" diameter "HI VAC" Flexible hose - price per foot

"Hi-Vac" Hoses, Wire Reinforced

- HVH-WR-0.75 0.75" diameter "HI-VAC" hose - price per foot
- HVH-WR-1.0 1.0" diameter "HI-VAC" hose - price per foot
- HVH-WR-1.25 1.25" diameter "HI-VAC" hose - price per foot
- HVH-WR-1.5 1.5" diameter "HI-VAC" hose - price per foot
- HVH-WR-1.75 1.75" diameter "HI-VAC" hose - price per foot
- HVH-WR-2.0 2.0" diameter "HI-VAC" hose - price per foot
- HVH-WR-2.25 2.25" diameter "HI-VAC" hose - price per foot
- HVH-WR-2.5 2.5" diameter "HI-VAC" hose - price per foot
- HVH-WR-3.0 3.0" diameter "HI-VAC" hose - price per foot
- HVH-WR-4.0 4.0" diameter "HI-VAC" hose - price per foot

Hose Connectors and Fittings

- 7TL09002 2 Piece Wand, 54" Long, 1.5 diameter
- AD-2MTP-2I Dual hose adapter. Machine connection: 2" MTP. Hose connection: 2 X 2" insert (Barbed).
- AD-2MTP-1-2I Hose adapter. Machine connection: 2" MTP. Hose connection: 2" insert (Barbed).
- AD-2MTP-2FTP 2" Male pipe thread (MTP) to 2" Female Pipe thread (FTP) bushing.
- AD-2I-1I 2" to 1" male insert (Barbed) reducing adapter.
- 7HD91011 2" x 1.5" reducer. To connect 2" hose to the 7TL0-9002 (2 piece wand).
- HOSE-C-1.25"x1.5" Hose Connector, Steel. Connects 1 1/4" to 1 1/2" vacuum hose.
- HOSE-C-1.75 Hose Connector Steel. Connects 1 3/4" hose to 2" vacuum hose

Hose Clamps

- HCS-1.25 Hose Clamps 1.25" (32mm) Ø
- HCS-2 Hose Clamps 2-3" (50-75mm) Ø
- HCS-3 Hose Clamps 3" (75mm) Ø
- HCS-4 Hose Clamps 4" (100mm) Ø

Source Capture Nozzles, Suction Casings & Hoods

- 2AH17008 Nozzle, Soldering Iron.
- 2AH17003 Magnetic Nozzle, short. Nozzle comes complete with:
2" diameter hose connection
10 X 1.25" rectangular opening for capture of fumes and dust
- 2AH17004 Magnetic Nozzle, long. Nozzle comes complete with:
2" diameter hose connection, 19" Long flexible steel duct
10" x 1.25" rectangular opening for capture of fumes and dust
- OG-MG-001 ON-GUN suction nozzle for most 250-400 amp. MIG welding guns, as follows:
50-80 CFM required per gun (depending on the application and welding gun amperage)
Nozzle supplied with a 1" hose connection 10' hose c/w hose cuff (Hose and hose clamps)
- OG-MG-005 ON-GUN suction nozzle for most "Push/Pull" MIG welding guns, as follows:
60-100 CFM required per gun (depending on the application and welding gun amperage)
Nozzle supplied with a 1" hose connection (Hose and hose clamps must be ordered)
- OG-MG-006 ON-GUN suction nozzle for most "Large Automatics" MIG welding guns, as follows:
400+ amp.
70-120 CFM required per gun (depending on the application and welding gun amperage)
Nozzle supplied with a 1" hose connection (Hose and hose clamps must be ordered separately)

Manual Motor Starter

- P-024-1 115V/1/60 Fan Motor control station. Permits manual start-stop of the fan. Comes complete with motor overload protection on/off control power cord and plug. Overload rating according to the FLA of the motor. Field installation required.

Fan, Light & Other Electrical Accessories

- MAG-ST-15 Magnetic Starter with Circuit Breaker Protection. Rated up to 15 amps, please specify voltage, phase and HP when ordering.
- MAG-ST-30 Magnetic Starter with Circuit Breaker Protection. Rated up to 30 amps, please specify voltage, phase and HP when ordering.
- MAG-ST-5 Magnetic Starter with Circuit Breaker Protection. Rated up to 5 amps, please specify voltage, phase and HP when ordering.
- MAN-ST-15 Manual Starter with Circuit Breaker Protection. Rated up to 15 amps, please specify voltage, phase and HP when ordering.
- MAN-ST-30 Manual Starter with Circuit Breaker Protection. Rated up to 30 amps, please specify voltage, phase and HP when ordering.
- MAN-ST-5 Manual Starter with Circuit Breaker Protection. Rated up to 5 amps, please specify voltage, phase and HP when ordering.
- P-025-1 Energy Saver E- Man@ 115V/1/60. Fan Motor control station. Permits automatic start-stop of the fan from the extractor arm hood or

12-03

CUSTOMER:
CUSTOMER P.O.:
PROJECT:
ENGINEER:
SALES REP.:
IDENTIFICATION / TAGGING:

> www.lev-co.com • 1.888.862.5356

lev-co

The device depicted and described hereon embodies proprietary information owned by the manufacturer. All design, manufacturing, reproduction, sales and patent rights regarding this device or drawing reserved except where explicit right is guaranteed in writing. We reserve the right to make design changes.

Drawn by: JANOS B
Date: 5/2/2008
Scale: NTS
Weight: N/A



12-03 V2 Portable
Specification Drawing
Drawing No.: - File Name: (12-03) V2 Portable - SD
Material: Product manufactured by: Sheet: 2/2

DUST COLLECTION • FUME EXTRACTION • OIL MIST FILTRATION • VEHICLE EXHAUST

Airflow
SYSTEMS INC.