

lev-co

DUST COLLECTION • FUME EXTRACTION • OIL MIST FILTRATION • VEHICLE EXHAUST

(04-12) SHAKER DUST COLLECTORS SCS – SCST SERIES

## DUST COLLECTOR SCS Series



### *General Points*

The SCS is a dust collector with a mechanical “shaker”. Construction is solid and of industrial quality.

The SCS can be equipped with a centrifugal fan, with a motor ranging from 3 to 15 H.P.

The polyester needlefelt filter allows for highly efficient filtration. The fabric is specially treated to facilitate the removal of dust.

#### Two modes are available :

- The SHORT HOPPER model (SCS) allows for the use of barrels to collect the dust.
- The LONG HOPPER model (SCST) allows for the installation of a rotary airlock and a container under the hopper.

The SCS dust collector is an inexpensive solution that has a multitude of applications.

## *Theory of Operation*

The dust is drawn into the dust collector where the velocity of the dust is reduced. The heaviest particles fall directly into the hopper, while the finest particles are drawn into the interior surface of the bags.

The air coming through the bag is now clean and can either be recirculated within the plant or discharged outside.

### Cleaning :

Cleaning the bags can be done with a manual shaker arm or an electrical shaker.

The frequency of cleaning depends on the quantity and type of dust particles.

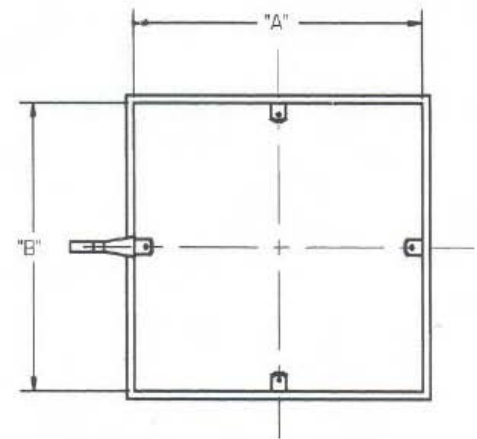
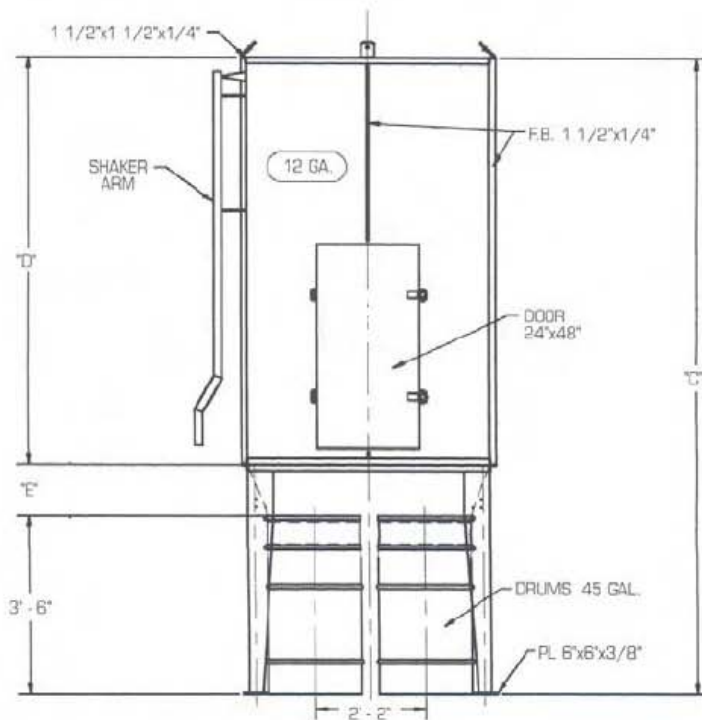
**While cleaning the bags, the fan must be stopped.**

### Options :

- Electric shaker;
- Prewired control panel;
- Explosion door;
- Silencer;
- Rotary airlock (on SCST model only).

## Technical Data Sheet – SCS SERIES

MODEL	A	B	C	D	E	WEIGHT	BARREL
SCS-16-100	29"	29"	10'-3"	60"	15"	650	1
SCS-16-165	29"	29"	13'-3"	96"	15"	800	1
SCS-25-155	36"	36"	10'-3"	60"	15"	775	1
SCS-25-258	36"	36"	13'-3"	96"	15"	950	1
SCS-36-223	43"	43"	10'-9"	60"	21"	925	1
SCS-36-371	43"	43"	13'-9"	96"	21"	1150	1
SCS-48-297	57"	43"	10'-9"	60"	21"	1100	2
SCS-48-495	57"	43"	13'-9"	96"	21"	1325	2
SCS-64-396	57"	57"	10'-9"	60"	21"	1250	4
SCS-64-660	57"	57"	13'-9"	96"	21"	1525	4
SCS-80-495	57"	71"	10'-11"	60"	23"	1500	4
SCS-80-825	57"	71"	13'-11"	96"	23"	1800	4
SCS-100-619	71"	71"	10'-11"	60"	23"	1700	4
SCS-100-1031	71"	71"	13'-11"	96"	23"	2050	4



## Technical Data Sheet – SCST SERIES

MODEL	A	B	C	D	E	WEIGHT	BARREL
SCST-16-100	29"	29"	10'-5"	60"	17"	675	1
SCST-16-165	29"	29"	13'-5"	96"	17"	825	1
SCST-25-155	36"	36"	10'-11"	60"	23"	825	1
SCST-25-258	36"	36"	13'-11"	96"	23"	1000	1
SCST-36-223	43"	43"	11'-5"	60"	29"	1000	1
SCST-36-371	43"	43"	14'-5"	96"	29"	1225	1
SCST-48-297	57"	43"	12'-5"	60"	41"	1300	1
SCST-48-495	57"	43"	15'-5"	96"	41"	1525	1
SCST-64-396	57"	57"	12'-5"	60"	41"	1475	1
SCST-64-660	57"	57"	15'-5"	96"	41"	1750	1
SCST-80-495	57"	71"	13'-5"	60"	53"	1800	1
SCST-80-825	57"	71"	16'-5"	96"	53"	2100	1
SCST-100-619	71"	71"	13'-5"	60"	53"	2050	1
SCST-100-1031	71"	71"	16'-5"	96"	53"	2400	1

