

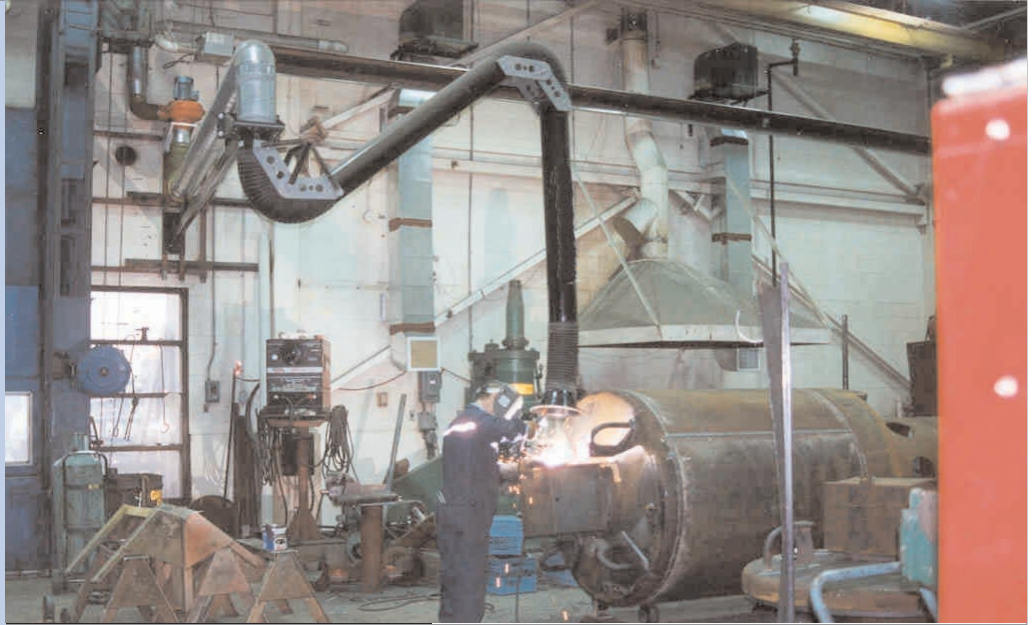
lev-co

Toronto · Ottawa · Montréal
Windsor · London · Edmonton
tel 1.888.862.5356
email sales@lev-co.com
website www.lev-co.com

**HIGH FLOW EXTRACTOR E-Z ARMS -
WELDING SMOKE COLLECTION -
CANADIAN COAST GUARD**

©Copyright. All right reserved. All information may not be reproduced, handed over, copied, xeroxed or translated into another language in any other form or means with out permission from LEV-CO.

case study



APPLICATION:

A Coast Guard station had a large welding shop used primarily in welding buoys. They needed two extraction arm assemblies with a high range of movement (including 360° rotation with booms), springs out of the way for safety, low maintenance with proven reliability. Additional features had to be easy to adjust and reach working areas.

SOLUTION:

LEV-CO provided a proposal that included two 14' high volume E-Z Arms with 16' extension booms. The existing fans would be used and ducted up through the roof. This solution would capture welding smoke at a distance of 30". The extraction arms are made of aluminum tubing containing no internal components which allows for high airflow. It has a strong lasting design and low energy consumption rate from the motor/blower units zone.

PRODUCT DESCRIPTION:

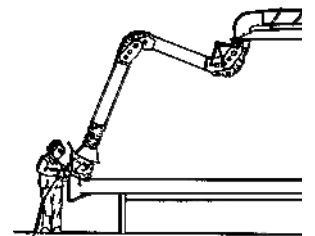
2 x High Flow Extractor E-Z Arms with 16' extension booms
1 x Installation as per Industrial Ventilation Guidelines

INDUSTRY:

Canadian Coast Guard

TESTIMONIAL:

“Our welders like the flexibility of the arms and the ease in positioning such a large arm.”



Extractor Arm with Boom